

## 说明

感谢您使用我公司生产的产品。

本零件图册适用于我公司生产的LG16B, LG16BC, LG16BJ, LG16BZ, LG16BQ, LG18B 电瓶叉车, 以使用户在修理更换叉车零部件时, 从中查找出所需的零件名称、结构及安装位置, 并作为订货参考。

在订货时, 必须说明原叉车的型号及出厂日期, 并根据本图册, 说明零件的详细名称、标号、数量及完整的代号。

我公司叉车根据用户和生产发展, 将不断地进行改进, 故图册内容可能在一定的时期将有更动, 待再版时予以修改, 敬请用户注意。

本图册不可避免的存在缺点, 我们热诚欢迎用户提出宝贵意见。

本图册为第2版, 第0次修改。

2013年12月

## Introduction

Thank you for selecting our products.

This parts catalogue is applied for the LG16B, LG16BC, LG16BJ, LG16BZ, LG16BQ, LG18B battery type forklift produced by our plant. It is convenient for users to identify the description, the structure and the assembling location of the parts replaced or repaired, and to put order on them.

When ordering parts, it is necessary to state the model of the forklift, and manufacturing date, and the description, specification, quantity and code based on this parts book.

Owing to the rapid development of the technology and our continuous improvement of product, the information contained in this book may be changed without notice.

For improving our work, customers are sincerely requested to give us comments and suggestions.

Edition 2, Modified 0.

Dec.2013

查询方法:

- 1.在目录中找到相应的系统或总成;
- 2.翻至所标页数,找到该图;
- 3.在其图中找出所需零部件,以及它所标注的序号;
- 4.根据这个序号,在其后附表中可以查到系统或零件的详细信息.

订购零部件时,务请写清叉车的型号,出厂编号,所需零部件的图号及订购数量.

维修时,请使用原厂家提供的零部件,以确保叉车质量.

Indexing Way:

- 1.Find out the indexing for the system or assembly.
- 2.According to above page, find out the detail drawing for the system or assembly required.
- 3.From the detail drawing, find out the parts and their item numbers.
- 4.According to these item numbers, find out details of these parts of the system or assembly from attached table.

When ordering the parts or components, please indicate the model and series numbers of parts or components you require and their quantity.

When you replace parts or components, please apply the real goods made by our company to ensure the truck's quality.

## 目录/Contents

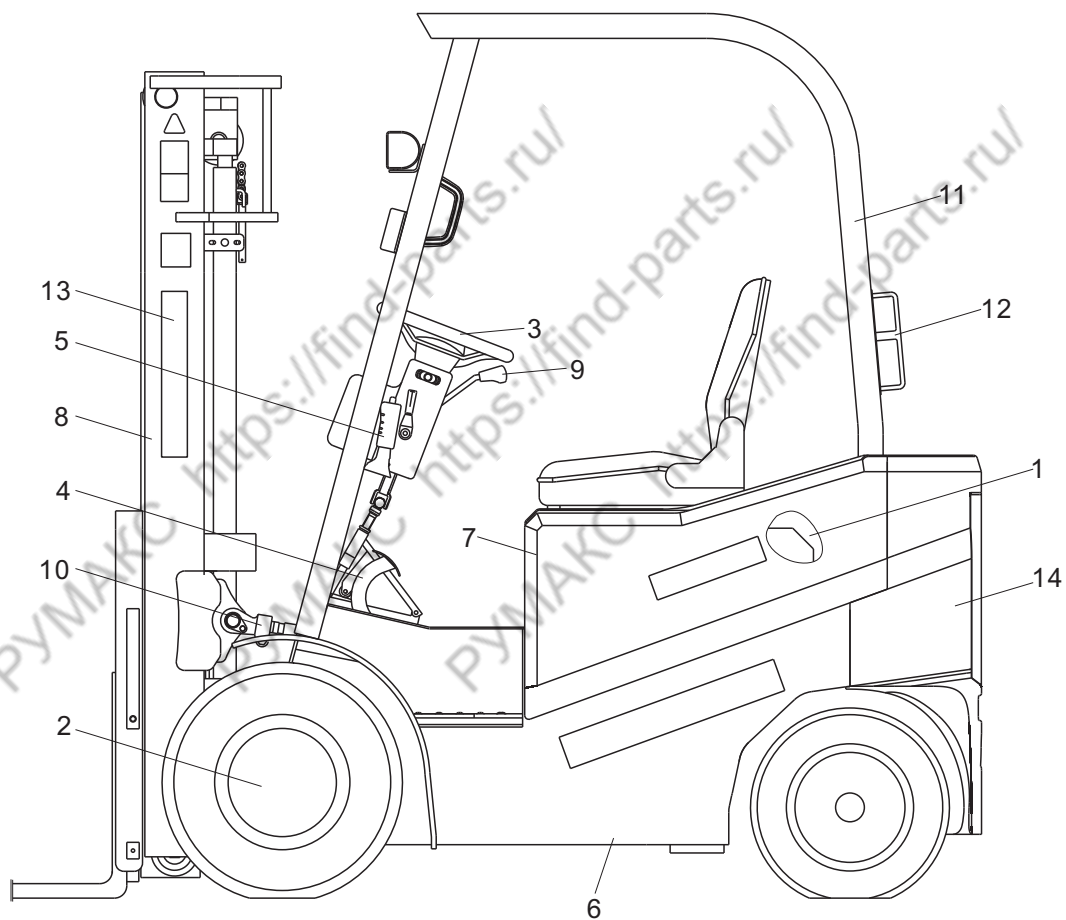
系统总图/General chart .....	1
蓄电池总成/Battery assembly .....	3
传动系统/Drive system .....	4
传动系统/Drive system .....	6
减速器总成/Reducer assembly .....	8
差速器总成/Differential assembly .....	10
驱动桥/ Drive axle .....	12
方向总成/Steering wheel assembly .....	14
转向桥总成/Steering axle assembly .....	16
转向桥/Steering axle .....	18
转向油缸/ Steering cylinder .....	21
行车制动系统/Brake control system .....	23
手制动总成/ Parking brake assembly .....	25
车架/chassis .....	26
覆盖件系统/Outer panel system.....	28
门架(基本型) /Mast (normal) .....	30
门架(二级全自由) /Mast (full free 2-stage) .....	33
门架(三级全自由) /Mast (full free 3-stage) .....	36
货叉及货叉架/Fork & fork carrier .....	39
起升油缸(基本型) /Lift cylinder(normal) .....	41
前起升油缸/Front Lift cylinder .....	44
后起升油缸(二级全自由) /Rear Lift cylinder(full free 2-stage) .....	47
后起升油缸(三级全自由) /Rear Lift cylinder(full free 3-stage) .....	50
倾斜油缸总成/Tilt cylinder assembly .....	53
门架侧移管路(基本型)/Side shifting pipe mast(normal mast) .....	55
门架侧移管路(二级全自由)/Side shifting pipe mast(full free 2-stage mast) .....	57
门架侧移管路(三级全自由)/Side shifting pipe mast(full free 3-stage mast) .....	59

## 目录/Contents

门架起升管路(基本型)/Lift pipe mast(normal mast) .....	61
门架起升管路(二级全自由)/Lift pipe mast(full free 2-stage mast) .....	62
门架起升管路(三级全自由)/Lift pipe mast(full free 3-stage mast) .....	64
多路阀操纵/Multi-way valve control .....	66
液压系统/Hydraulic system .....	68
液压油箱/Hydraulic oil tank .....	71
护顶架/Overhead guard .....	72
电气系统/Electric system .....	74
电气系统/Electric system .....	77
电控总成/Controller assembly .....	80
电控总成/Controller assembly .....	81
电控总成/Controller assembly .....	82
电控总成/Controller assembly .....	83
电源插接器总成/Power Plug assembly .....	84
电源插接器总成/Power Plug assembly .....	85
电源插接器总成/Power Plug assembly .....	86
标牌/Label .....	87
平衡重总成/Counter weight assembly .....	89

系统总图 / General chart

通用

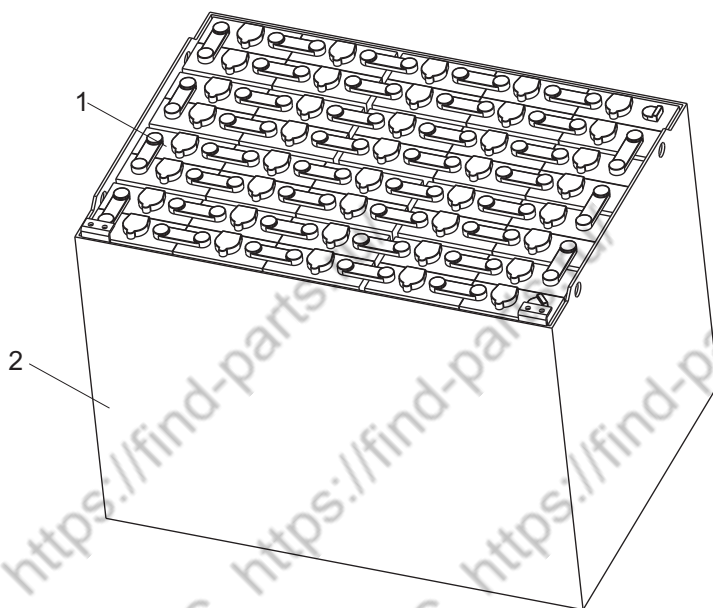


## 系统总图/General chart

序号 Item No	编 码 Code	图 号 Part No	零 部 件 名 称 Description	数 量 Q'ty	备 注 Remark
1	30001910106	LG0016B.01	动力系统 Power system	1	
2	30002910106	LG0016B.02	传动系统 Drive system	1	16B,18B
	30002910160	LG0016BC.02	传动系统 Drive system	1	16BC
	30002910156	LG0016BZ.02	传动系统 Drive system	1	16BZ
	30002910146	LG0016BJ.02	传动系统 Drive system	1	16BJ
	30002910154	LG0016BQ.02	传动系统 Drive system	1	16BQ
3	30003910107	LG0016B.03	转向系统 Steering system	1	
4	30006910108	LG0016B.06	行车制动系统 Service brake system	1	
5	30007910105	LG0016B.07	停车制动系统 Parking brake system	1	
6	30008910109	LG0016B.08	车架系统 Service brake system	1	
7	30009910107	LG0016B.09	覆盖件系统 Outer panel system	1	
8	30080911025	LG0016BC.10	标准门架系统 Mast system	1	高度3000
	30080912000	LG0016BC.10A	二级门架系统 Mast system	1	高度3000
	30080913038	LG0016BC.10B	三级门架系统 Mast system	1	高度4500
9	30011910104	LG0016B.11	多路阀操纵系统 Multi-way valve control	1	
10	30012910103	LG0016B.12	液压系统 Hydraulic system	1	16B,16BC,18B 16BZ,16BJ
	30012910145	LG0016BQ.12	液压系统 Hydraulic system	1	16BQ
11	30014910105	LG0016B.14	护顶架系统 Overhead guard system	1	
12	30015910107	LG0016B.15	电气系统 Electrical system	1	16B,18B
	30015910147	LG0016BC.15	电气系统 Electrical system	1	16BC
	30015910145	LG0016BZ.15	电气系统 Electrical system	1	16BZ
	30015910134	LG0016BJ.15	电气系统 Electrical system	1	16BJ
	30015910142	LG0016BQ.15	电气系统 Electrical system	1	16BQ
13	30016910113	LG0016B.16	标志标牌系统 Label system	1	16B,16BC,18B 16BZ
	30016910137	LG0016BJ.16	标志标牌系统 Label system	1	16BJ,16BQ
	30016910145	LG0018B.16	标志标牌系统 Label system	1	1.8T
14	30017910106	LG0016B.17	平衡重系统 Counter weight system	1	1.6T
	30017910131	LG0018B.17	平衡重系统 Counter weight system	1	1.8T

## 蓄电池总成/Battery assembly

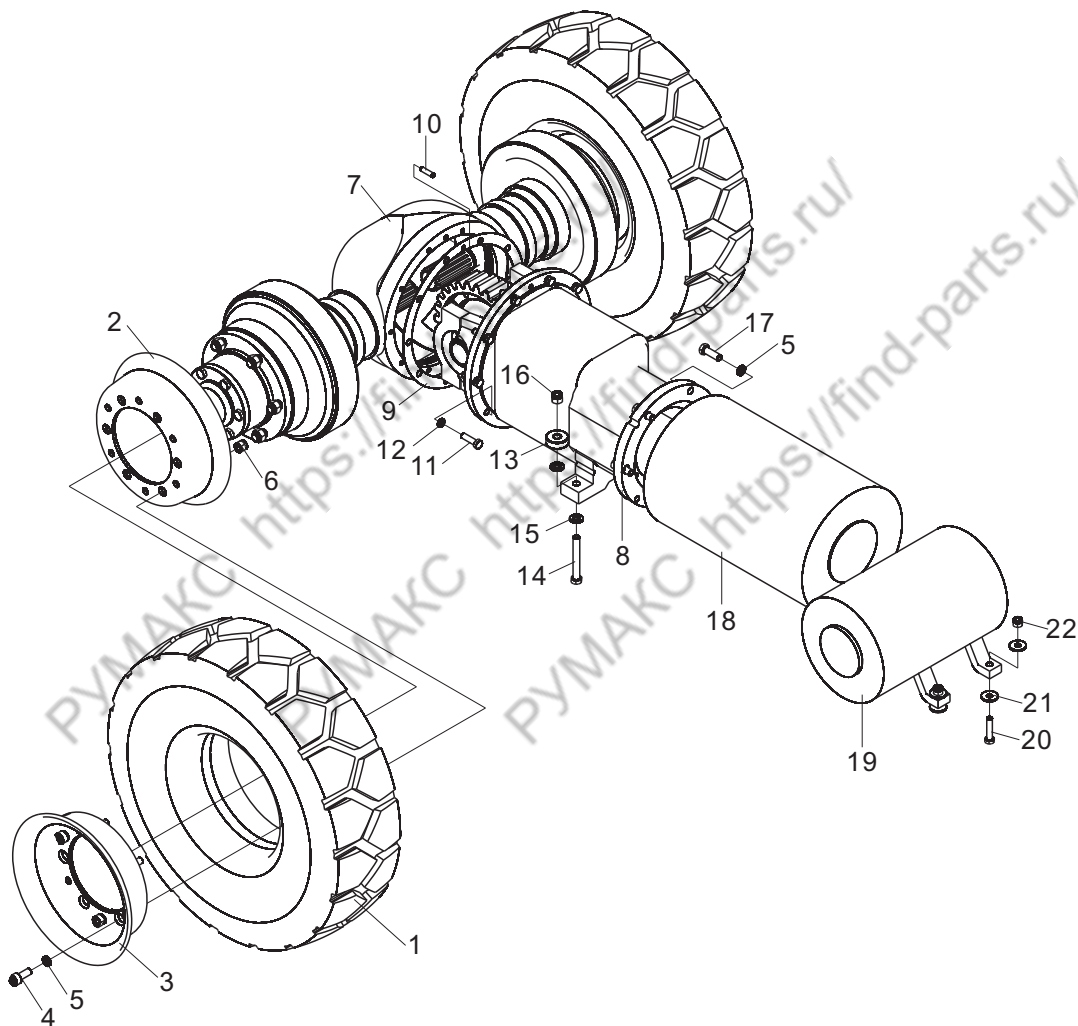
通用



序号 Item No	编 码 Code	图 号 Part No	零 部 件 名 称 Description	数 量 Q'ty	备 注 Remark
1	30001017102	10DB480	单体电池总成 Single battery group	24	
2	30001057802	LG0016B.01.01	箱体总成 Battery box	1	

# 传动系统/Drive system

LG16B, 16BZ, 16BJ, 16BQ, 18B

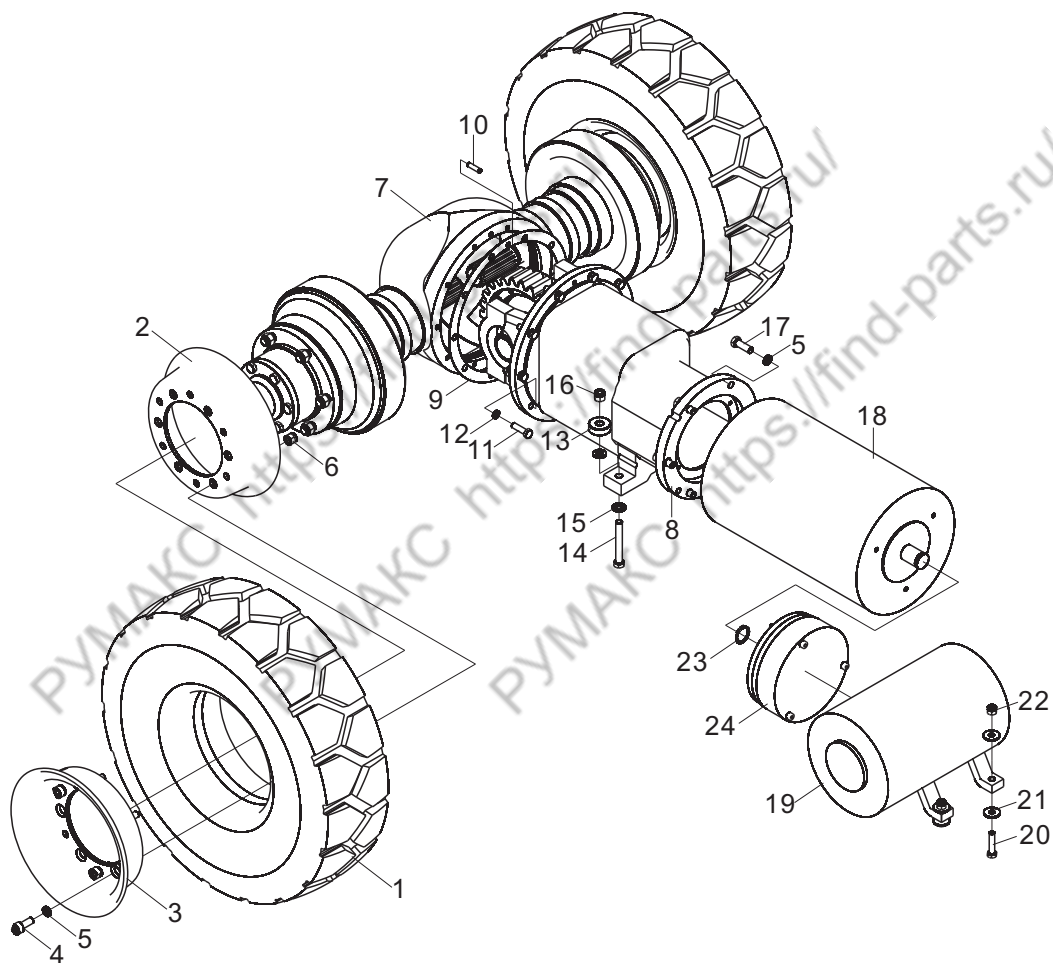






# 传动系统/Drive system

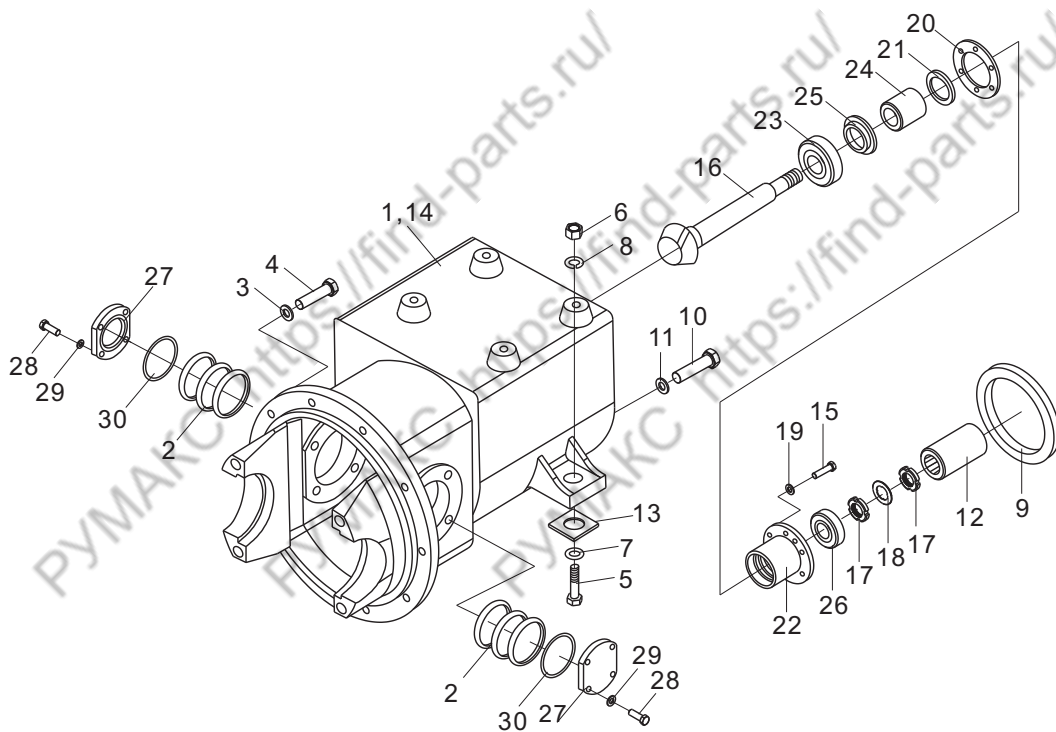
LG16BC





# 减速器总成/Reducer assembly

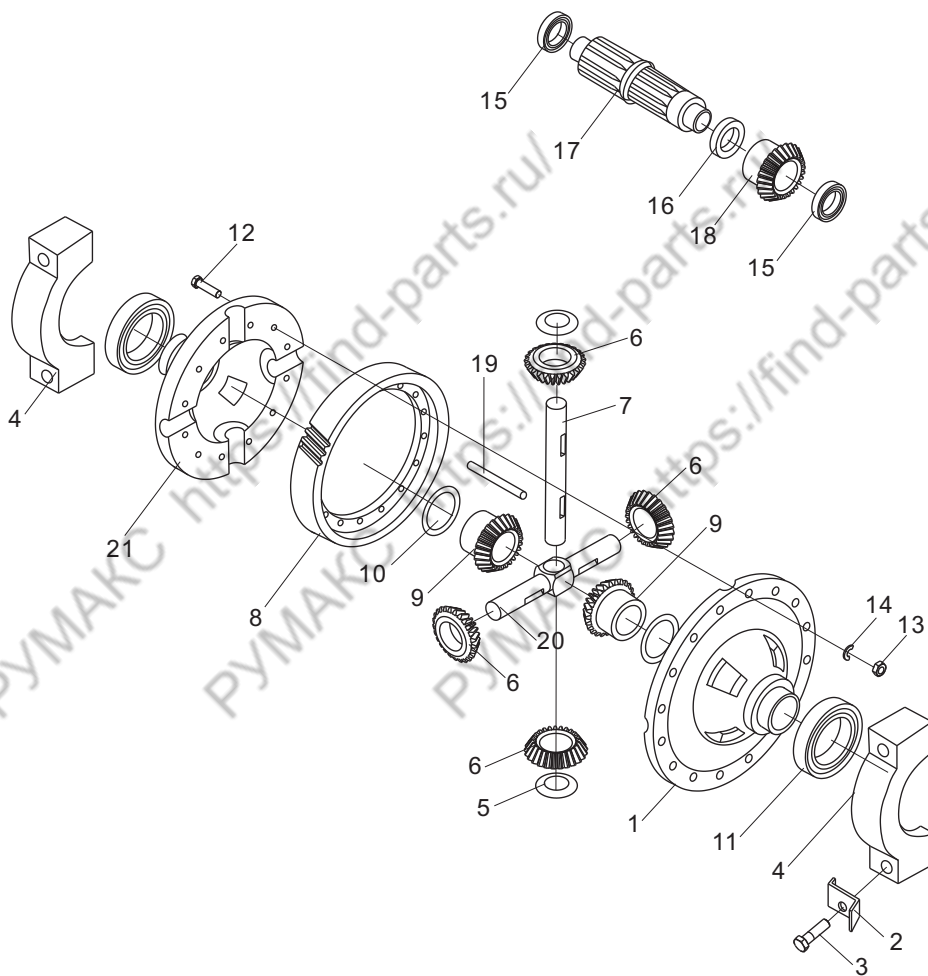
通用





# 差速器总成/Differential assembly

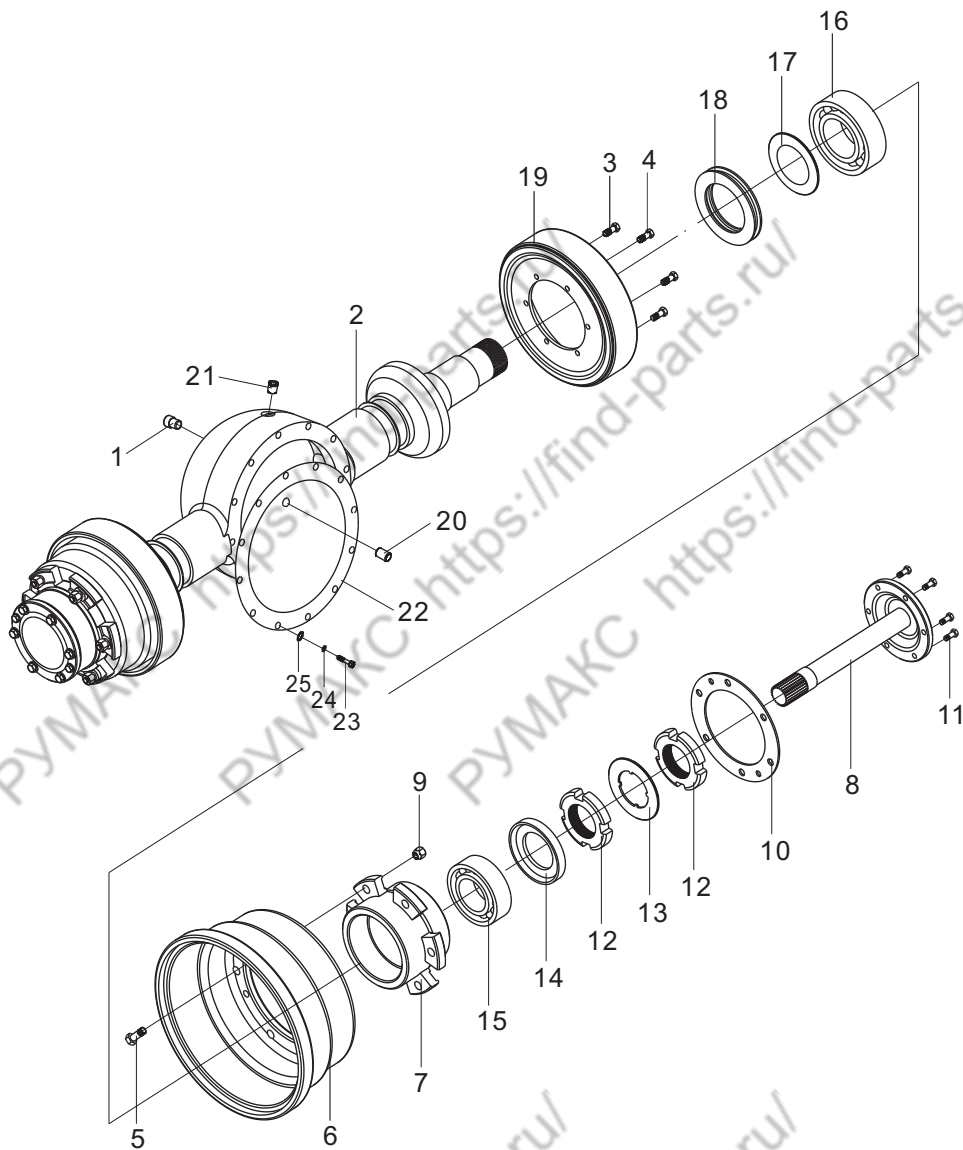
通用





# 驱动桥/Drive axle

通用

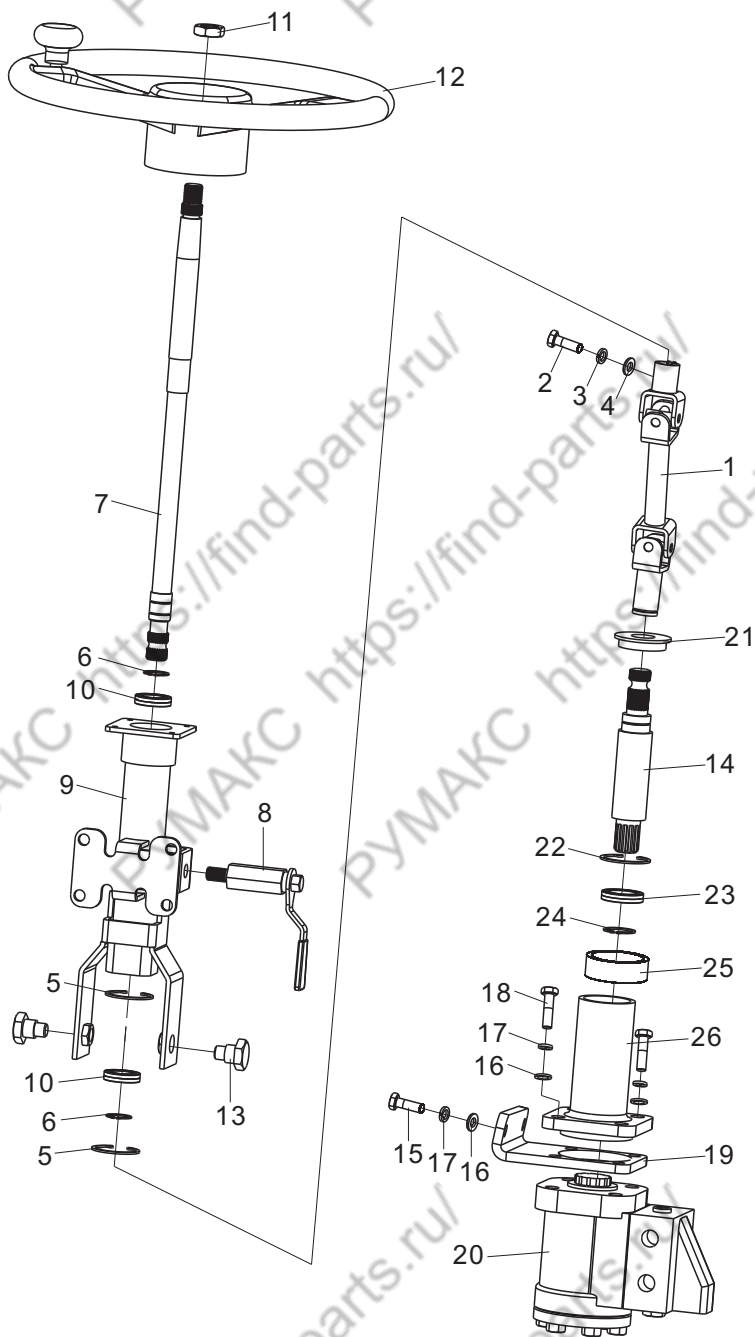






# 方向总成/Steering wheel assembly

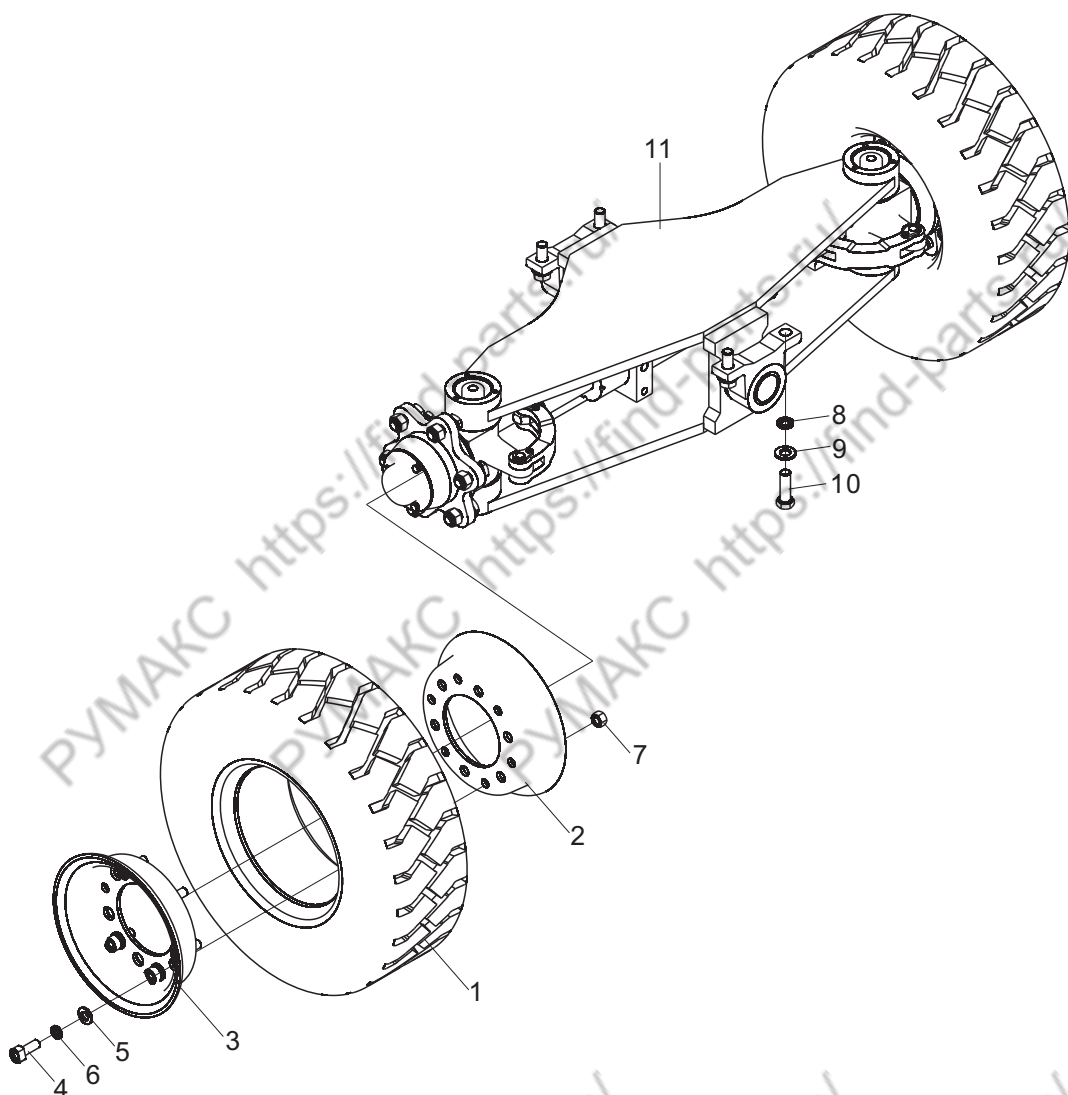
通用





# 转向桥总成/Steering axle assembly

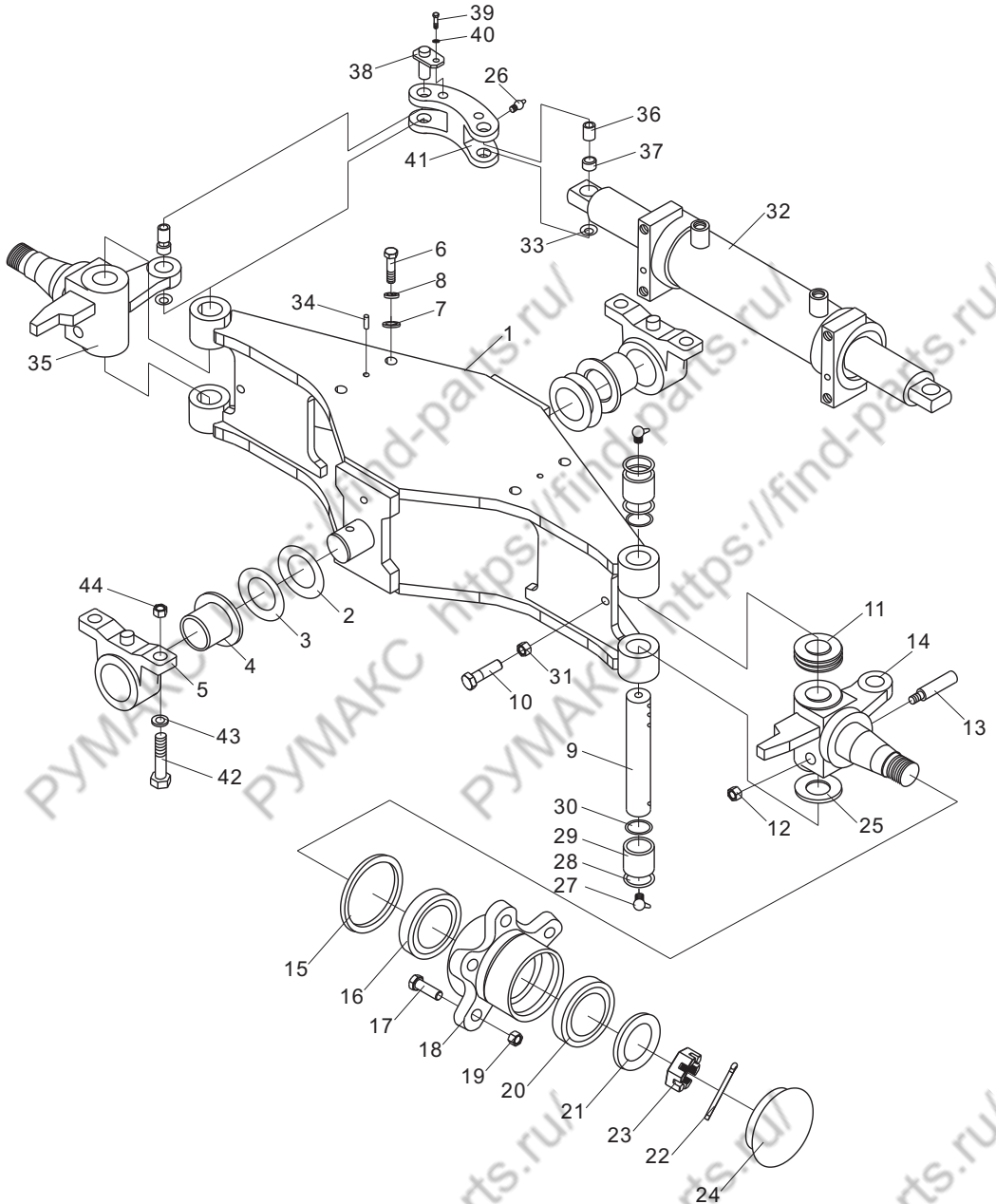
通用





# 转向桥/Steering axle

通用



## 转向桥/Steering axle

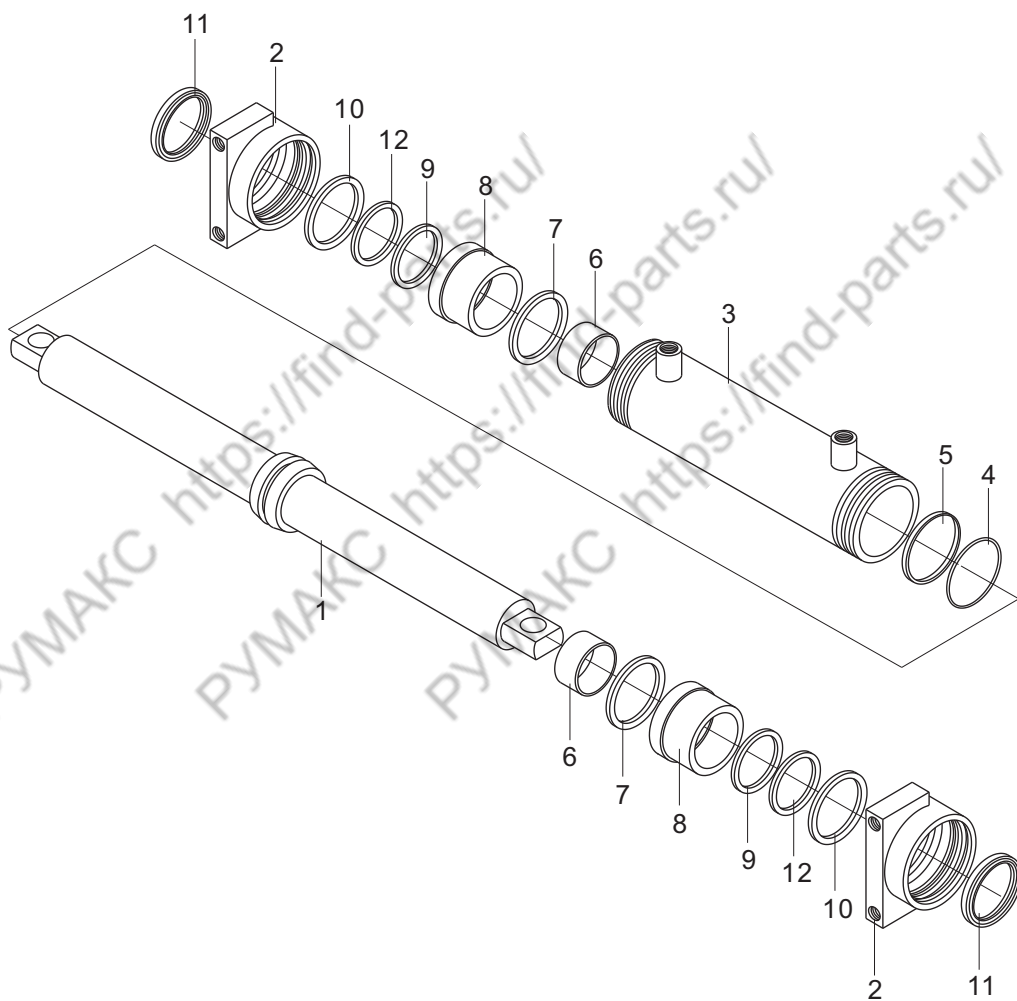
序号 Item No	图 号 Part No	零部件名称 Description	数量 Q'ty	备 注 Remark
1	A10C4-10301	转向桥体总成 Axle assembly	1	
2	23458-52031	垫片 Gasket	2	
3	24234-32501	垫片 Gasket	2	
4	24236-12581	衬套 Bushing	2	
5	23656-12572	后桥支座 Support seat of front axle	2	
6	GB/T5782-2000	螺栓M12X40 Bolt M12×40	4	
7	GB/T97.1-2002	垫圈12 Washer 12	4	
8	GB/T859-1987	垫圈12 Washer 12	4	
9	24234-32181	转向节主销 King pin of steering knuckle	2	
10	GB/T5786-2000	螺栓M10X1.25X40 Bolt M10×1.25×40	2	
11	GB/T6171-2000	螺母M10X1.25 Nut M10×1.25	2	
12	GB/T6170-2000	螺母M12 Nut M12	2	
13	GB78-1985	内六角锥紧定螺钉 Screw	2	
14	H12C4-30301	右转向节总成 Right steering knuckle	1	
15	22574-32102	骨架油封 Oil seal	4	
16	GB294-1984	圆锥滚子轴承7208E Tapered roller bearing 7208E	2	
17	23654-32041	轮毂螺栓 Bolt of hub	12	
18	24234-32221	转向轮毂 Steering wheel hub	2	
19	23654-34051	轮毂螺母 Hub nut	12	
20	GB297-1984	圆锥滚子轴承7206E Tapered roller bearing 7206E	2	
21	GB/T97.1-2002	垫圈24 Washer 24	2	
22	GB/T91-2000	开口销5X45 Cotter pin 5×45	2	
23	GB/T9459-2000	螺母M24X2 Nut M24×2	2	
24	22194-32361	轮毂盖 Hub cover	2	
25	20114-30091	转向节调整垫圈 Adjusting washer of steering knuckle	5	
26	Q070B06	直通式滑脂嘴 Straight lubricating fitting	4	
27	Q701B90	弯颈式滑脂嘴 Bent lubricating fitting	4	
28	24234-32231	防尘圈 Dust ring	4	
29	GB/T290-1982	滚针轴承 Needle bearing	4	
30	24234-32241	O形圈 O-ring	2	
31	GB/T6171-2000	螺母M10X1.25 Nut M10×1.25	2	
32	A65E4-50301	转向油缸总成 Steering cylinder	1	
33	A10C4-12091	垫片 Gasket	4	
34	GB/T119-1986	销 Pin	2	
35	H12C4-30401A	左转向节总成 Left steering knuckle assembly	1	
36	H12C4-32101	衬套 Bushing	4	





# 转向油缸 / Steering cylinder

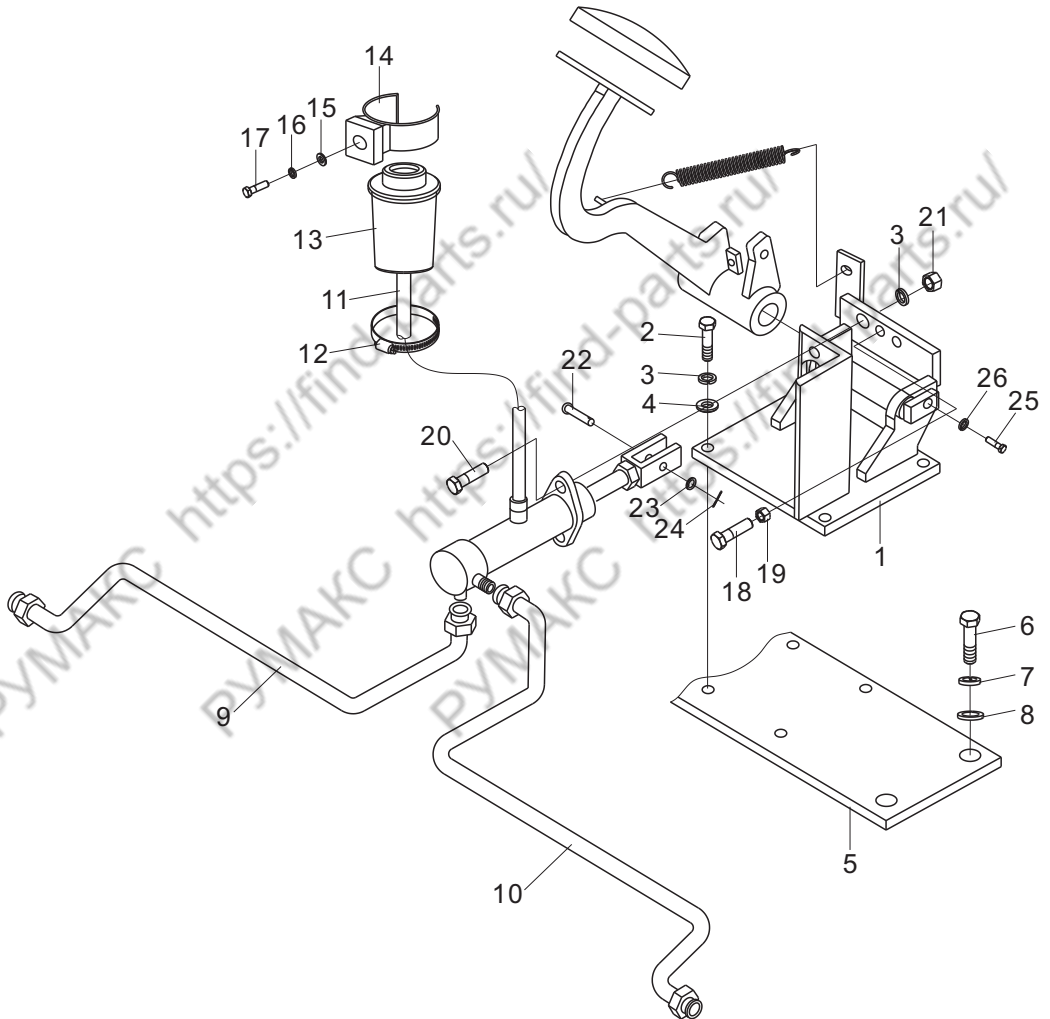
通用





# 行车制动系统 / Servie brake system

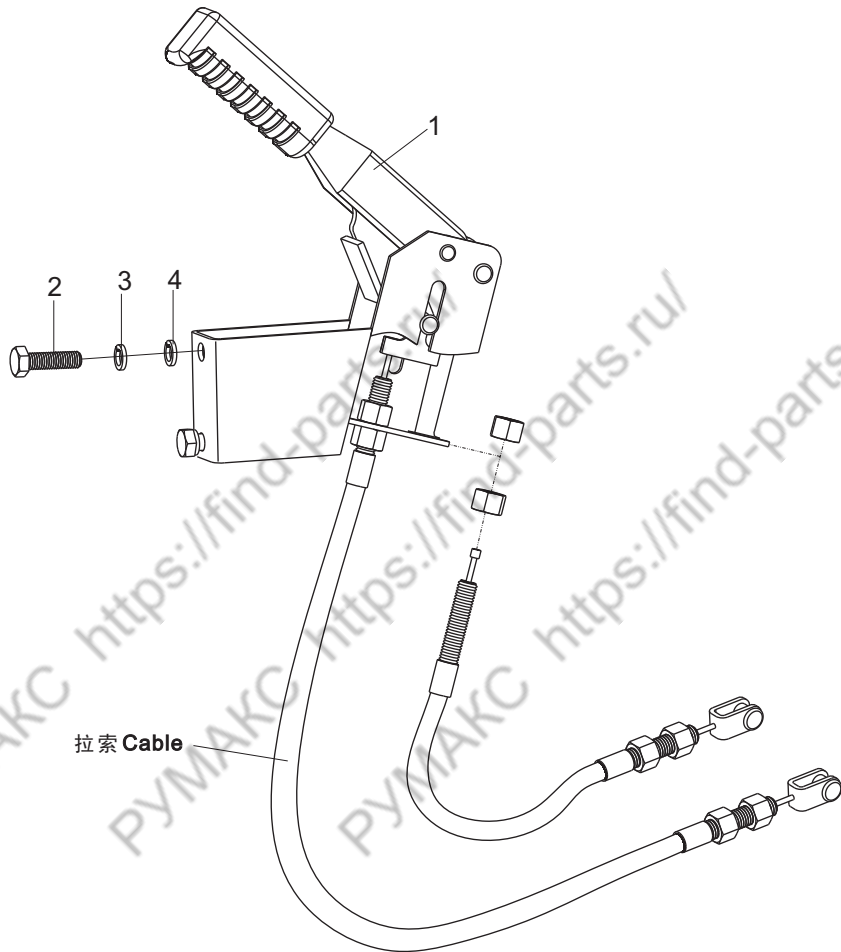
通用





# 手制动总成/Parking brake assembly

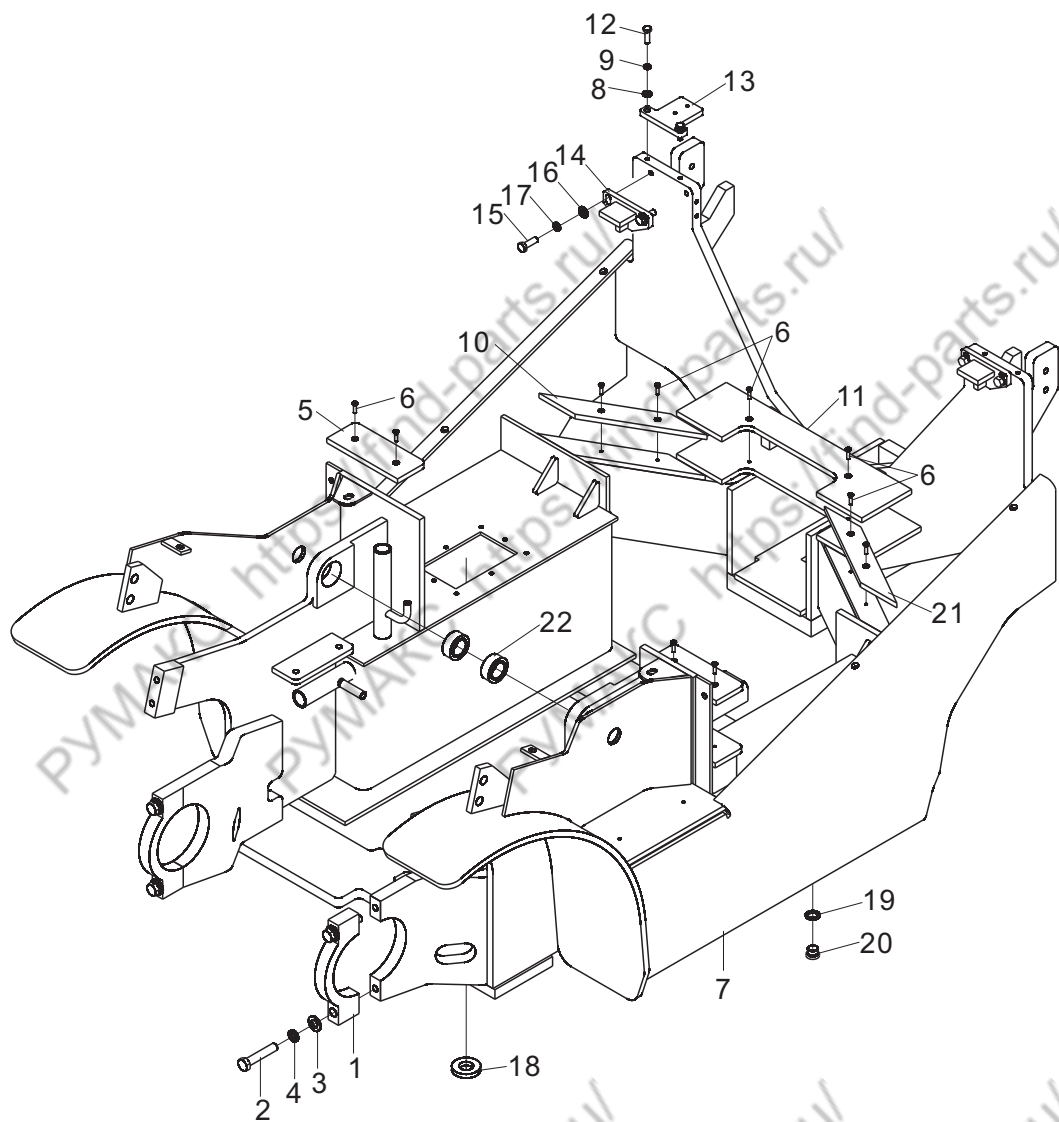
通用



序号 Item No	编 码 Code	图 号 Part No	零 部 件 名 称 Description	数 量 Q'ty	备 注 Remark
1	60208000100	LG0030B.07.03	手制动手柄总成 Parking brake handle	1	
2	51207105214	GB/T5786	螺栓M10X1.25X30 Bolt M10×1.25×30	2	
3	51401100107	GB/T93	垫圈10 Washer 10	2	
4	51421100115	GB/T97.1	垫圈10 Washer 10	2	

# 车架/Chassis

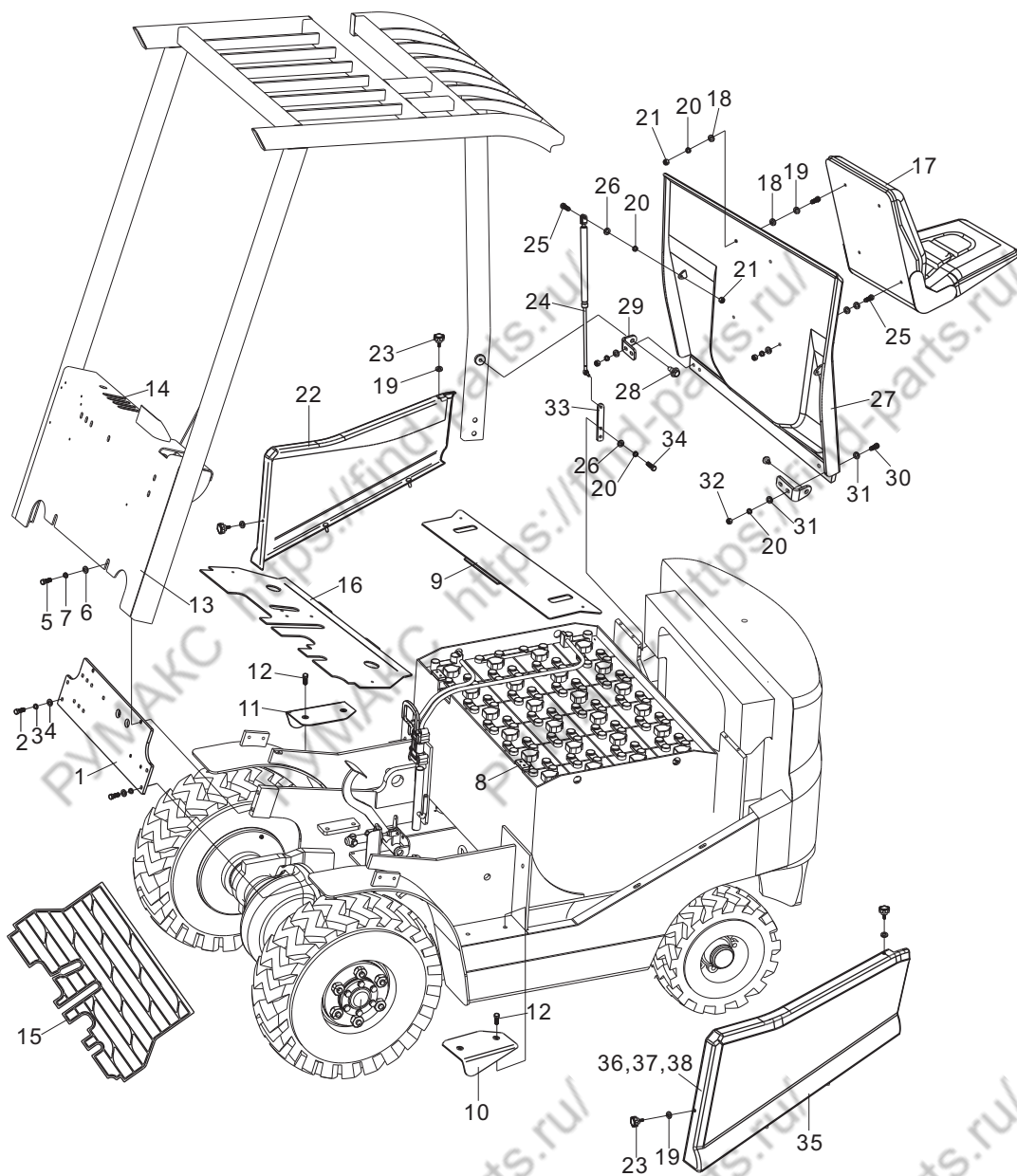
通用





# 覆盖件系统/Outer panel system

通用



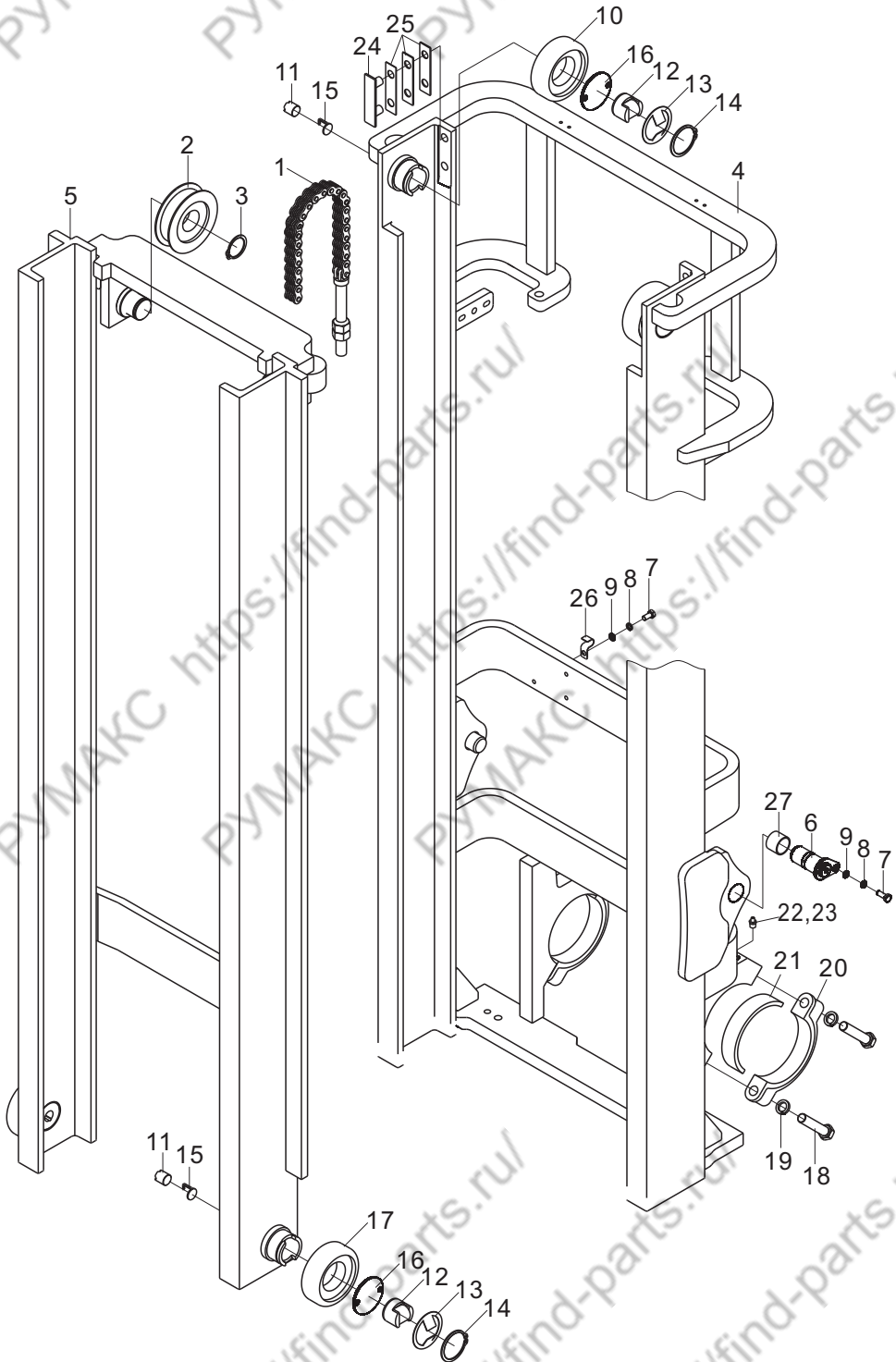


## 覆盖件系统/Outer pabel system

序号 Item No	编 码 Code	图 号 Part No	零 部 件 名 称 Description	数量 Q'ty	备 注 Remark
1	30009126501	LG0016B.09-001	横板 Transverse plate	1	
2	51204111214	GB/T5783	螺栓M12X30 Bolt M12×30	4	
3	51401110107	GB/T93	垫圈12 Washer 12	4	
4	51421110115	GB/T97.1	垫圈12 Washer 12	4	
5	51204090914	GB/T5783	螺栓M8X16 Bolt M8×16	1	
6	51421090115	GB/T97.1	垫圈8 Washer 8	1	
7	51401090107	GB/T93	垫圈8 Washer 8	1	
8	30001113901	LG0030B.01.01-007	橡胶垫 Rubber gasket	2	
9	30009045912	LG0016B.09.04	底板焊合 Bottom board weldment	1	
10	30009146805	LG0016B.09-004	踏板 Pedal	1	
11	30009146806	LG0016B.09-005	踏板 Pedal	1	
12	51159190304	GB/T819.1	螺钉M6X12 Screw M6×12	4	
13	30009152905	20B-0900010	线夹 Wire clip	1	
14	30011149501	LG0030B.11-002	防尘盖 Dust cover	2	三联1, 四联无
15	60922010124	LG0016B.09-006	橡胶垫 Rubber Gasket	1	
16	30009045932	LG0016B.09.05	底板焊合 Bottom board weldment	1	
17	60920010019	LG0020BD.09.03	座椅总成 Seat assembly	1	
18	30009113904	LG0020BD.09-005	橡胶垫 Rubber gasket	4	
19	51420090121	GB/T96.1	垫圈8 Washer 8	6	
20	51401090107	GB/T93	垫圈8 Washer 8	8	
21	51307000919	GB/T6170	螺母M8 Nut M8	5	
22	30009045802	LG0016B.09.03.02	侧板总成 Side board	1	
23	30009157301	LG0030B.09.05-002	螺钉 Screw	4	
24	60920010020	LG0016B.09.03.03	气弹簧 Air spring	1	
25	51204091214	GB/T5783	螺栓M8X30 Bolt M8×30	5	
26	51421090115	GB/T97.1	垫圈8 Washer 8	5	
27	30009046605	LG0016B.09.03.04	盖板总成 Cover plate assembly	1	
28	30009111101	LG0016B.09.03-001	螺栓 Bolt	2	
29	30009115011	LG0016B.09.03-002	支架 Bracket	2	
30	51204111614	GB/T5783	螺栓M12X50 Bolt M12×50	4	
31	51421110115	GB/T97.1	垫圈12 Washer 12	8	
32	51341000719	GB/T889.1	螺母M12 Nut M12	4	
33	30009115012	LG0016B.09.03-003	支架 Bracket	1	
34	51204091014	GB/T5783	螺栓M8X20 Bolt M8×20	2	
35	30009045803	LG0016B.09.03.05	侧板总成 Side board assembly	1	
36	60980004875	LG0016BE.09.12.01	搭扣总成 Snap assembly	1	
37	51158140504	GB/T818	螺钉M4X12 Screw M4×12	3	
38	51401060107	GB/T93	垫圈4 Washer 4	3	

# 门架(基本型) / Mast (normal)

通用



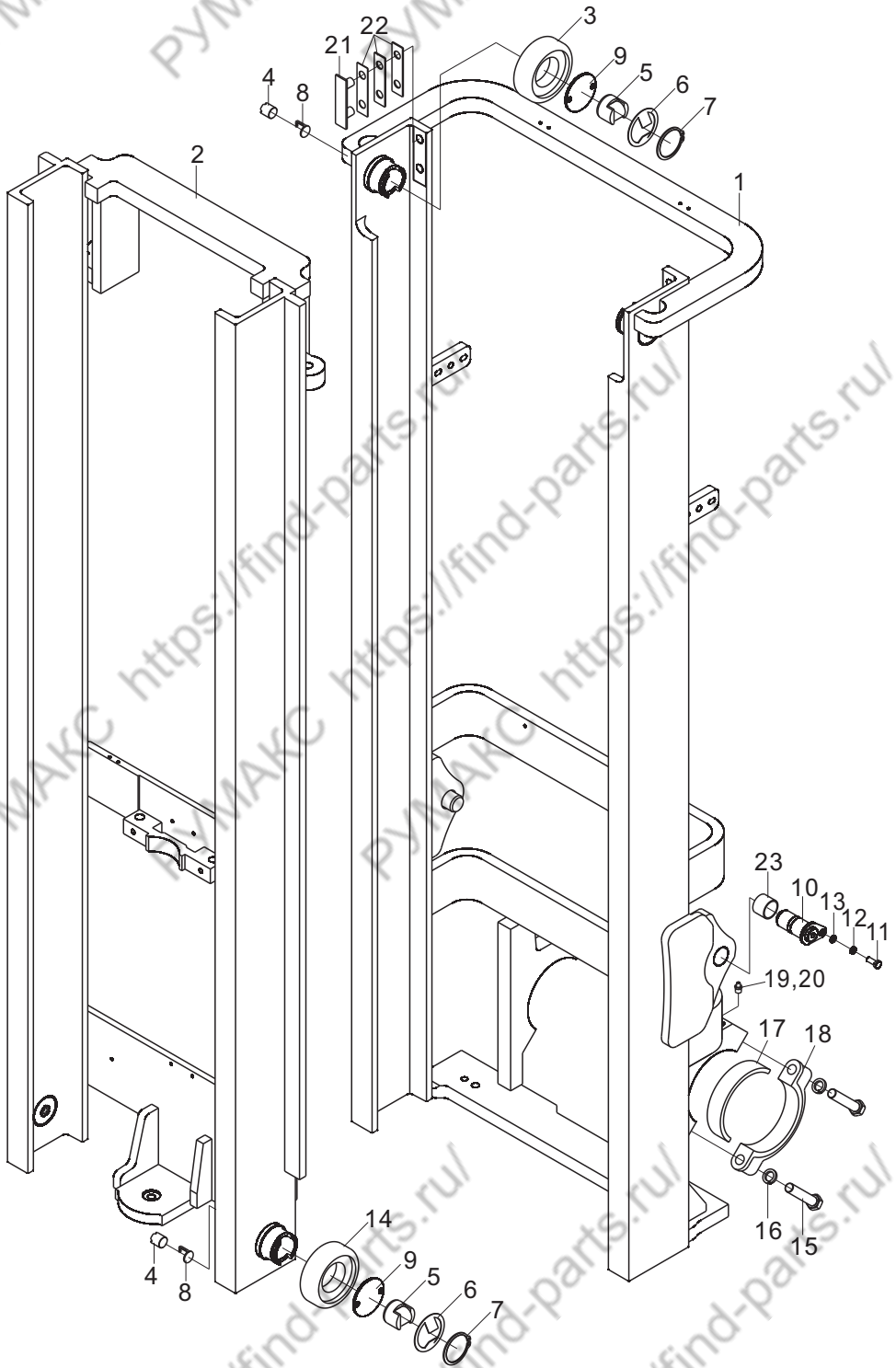
## 门架(基本型) / Mast (normal mast)

序号 Item No	编 码 Code	图 号 Part No	零部件名称 Description	数量 Q'ty	备 注 Remark
1	30080080123	LG0016BC.10.05	链条总成LH1223 Chain assembly	2	
2	30082185700	LG0030D.10-014	链轮 Chain wheel	2	
3	51453350107	GB/T894.1	挡圈40 Snap ring 40	2	
4	30080082724	LG0016BC.10.01	外门架焊合 Outer mast weldment	1	
5	30080081730	LG0016BC.10.02	内门架焊合 Inner mast weldment	1	
6	30080025000	LG0016BC.10.08	销轴焊合 Pin shaft weldment	2	
7	51204091014	GB/T5783	螺栓M8X20 Bolt M8×20	3	
8	51401090107	GB/T93	垫圈8 Washer 8	3	
9	51421090115	GB/T97.1	垫圈8 Washer 8	3	
10	30082141003	LG0030D.10-004	滚轮 Roller	2	
11	60980000833	LG0030D.10.06.01-002	螺钉M20X1.5X17 Screw M20×1.5×17	4	
12	30004141000	LG0030D.10.17-001	滚轮 Roller	4	
13	30080180401	LG0030D.10.16-002	防尘片 Dust ring	4	
14	51453420107	GB/T894.1	挡圈55 Snap ring 55	4	
15	30080182801	LG0030D.10.16-003	止松片 Stop plate	4	
16	30082113903	LG0030D.10-020	橡胶垫 Rubber gasket	4	
17	30080081404	LG0016BC.10.14-001	滚轮总成760211AT Roller assembly	2	
	30080081405	LG0016BC.10.14-002	滚轮总成760211A1T Roller assembly	2	
	30080081406	LG0016BC.10.14-003	滚轮总成760211A1.5T Roller assembly	2	
18	51207131814	GB/T5786	螺栓M16X1.5X60 Bolt M16×1.5×60	4	
19	51401130107	GB/T93	垫圈16 Washer 16	4	
20	30082118500	LG0030D.10-005	端盖 End cap	2	
21	30080184500	LG0016BC.10-006	轴衬 Bushing	2	
22	56201000301	JB/T7940.1	油杯M10X1 Oil cup M10×1	4	
23	60980005823	LG0030D.10-021	红色保护套 Red sheath	4	
24	30080185100	LG0016BC.10-001	滑块 Sliding block	2	
25	30082154800	LG0030D.10-008	调整垫 Adjusting gasket	2	t0.5
	30082154805	LG0030D.10-008	调整垫 Adjusting gasket	2	t1.0
	30082154806	LG0030D.10-008	调整垫 Adjusting gasket	2	t2.0
26	30082107800	LG0030D.10-015	管夹 Clip	1	
27	52001000302	GB/T12949	滑动轴承30X34X25 Slide bearing 30×34×25	2	



门架(二级全自由) / Mast (full free 2-stage mast)

通用



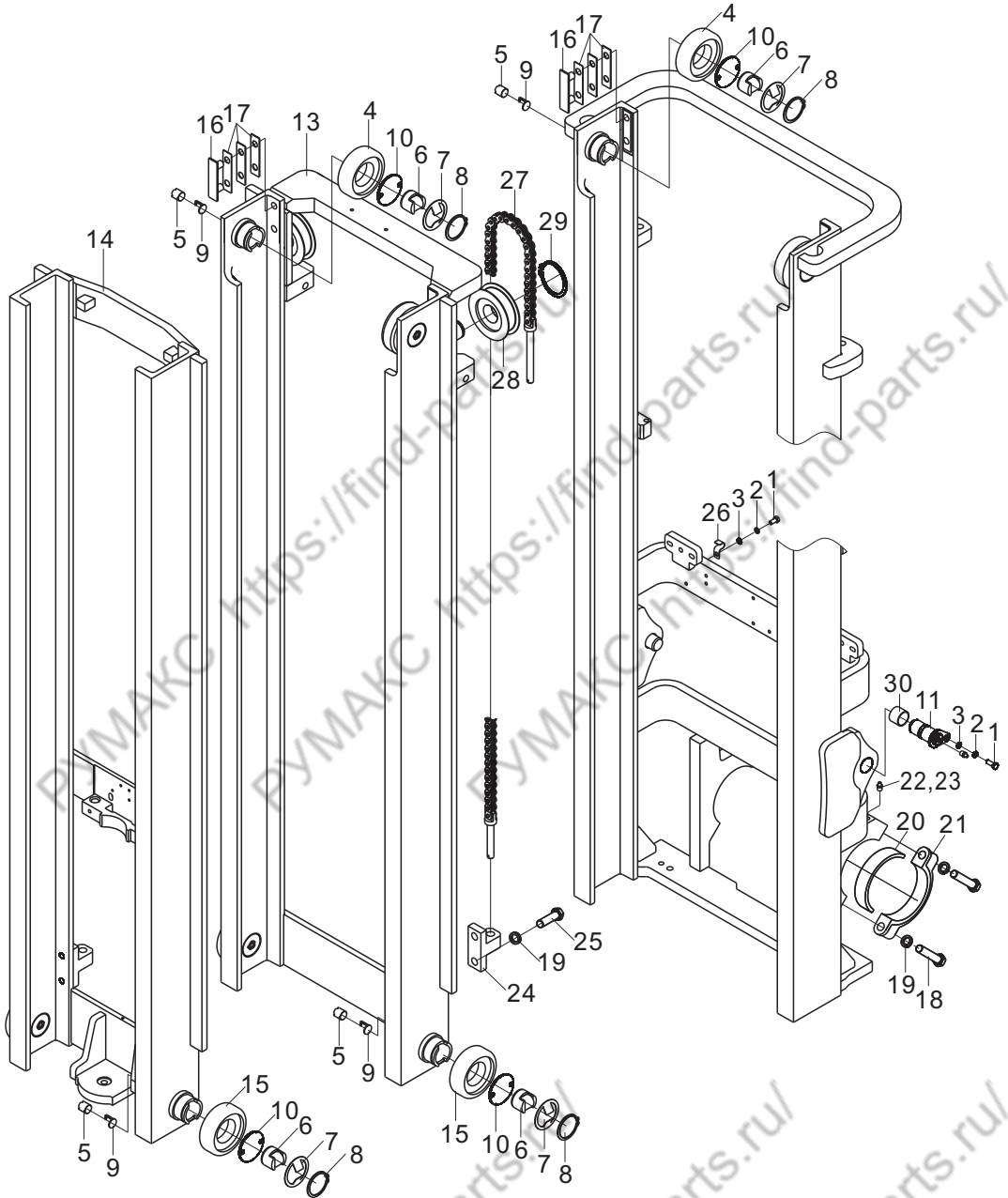






# 门架(三级全自由) / Mast (full free 3-stage mast)

通用





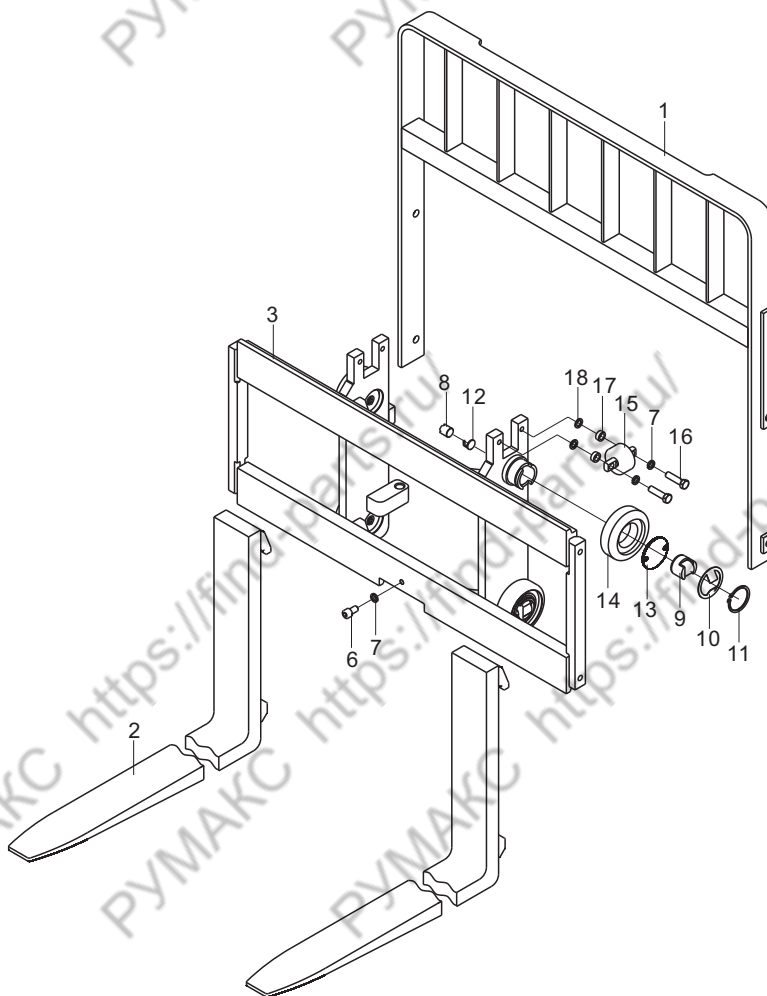
门架(三级全自由) / Mast (full free 3-stage mast)

序号 Item No	编 码 Code	图 号 Part No	零部件名称 Description	数量 Q'ty	备 注 Remark	
1	51204091014	GB/T5783	螺栓M8X20	Bolt M8×20	4	
2	51401090107	GB/T93	垫圈8	Washer 8	4	
3	51421090115	GB/T97.1	垫圈8	Washer 8	4	
4	30082141003	LG0030D.10-004	滚轮	Roller	4	
5	60980000833	LG0030D.10.06.01-002	螺钉M20X1.5X17	Screw M20×1.5×17	8	
6	30004141000	LG0030D.10.17-001	滚轮	Roller	8	
7	30080180401	LG0030D.10.16-002	防尘片	Dust ring	8	
8	51453420107	GB/T894.1	挡圈55	Snap ring 55	8	
9	30080182801	LG0030D.10.16-003	止松片	Stop ring	8	
10	30082113903	LG0030D.10-020	橡胶垫	Rubber pad	8	
11	30080025000	LG0016BC.10.08	销轴焊合	Pin shaft weldment	2	
12	30080082893	LG0016BC.10B.01	外门架焊合	Outer mast weldment	1	
13	30080085315	LG0016BC.10B.03	中门架焊合	Middle mast weldment	1	
14	30080081801	LG0016BC.10B.06	内门架焊合	Inner mast weldment	1	
15	30080081404	LG0016BC.10.14-001	滚轮总成760211AT	Roller assembly	4	
	30080081405	LG0016BC.10.14-002	滚轮总成760211A1T	Roller assembly	4	
	30080081406	LG0016BC.10.14-003	滚轮总成760211A1.5T	Roller assembly	4	
16	30080185100	LG0016BC.10-001	滑块	Sliding block	4	
17	30082154800	LG0030D.10-008	调整垫	Adjusting gasket	4	0.5mm
	30082154805	LG0030D.10-008	调整垫	Adjusting gasket	4	1.0mm
	30082154806	LG0030D.10-008	调整垫	Adjusting gasket	4	2.0mm
18	51207131814	GB/T5786	螺栓M16X1.5X60	Bolt M16×1.5×60	4	
19	51401130107	GB/T93	垫圈16	Washer 16	8	
20	30080184500	LG0016BC.10-006	轴衬	Bushing	2	
21	30082118500	LG0030D.10-005	端盖	End cap	2	
22	56201000301	JB/T7940.1	油杯M10X1	Oil cup M10×1	4	
23	60980005823	LG0030D.10-021	红色保护套	Red sheath	4	
24	30080134819	LG0016BC.10B-001	支座	Support	2	
25	51207131314	GB/T5786	螺栓M16X1.5X35	Bolt M16×1.5×35	4	
26	30082107800	LG0030D.10-015	管夹	Clip	2	
27	30080080103	LG0016BC.10B.08	链条总成LH1223	Chain assembly	2	
28	30082185700	LG0030D.10-014	链轮	Chain wheel	2	
29	51453350107	GB/T894.1	挡圈40	Snap ring 40	2	
30	52001000302	GB/T12949	滑动轴承30X34X25	Sliding bearing 30×34×25	2	



## 货叉及货叉架/Fork & fork carrier

通用

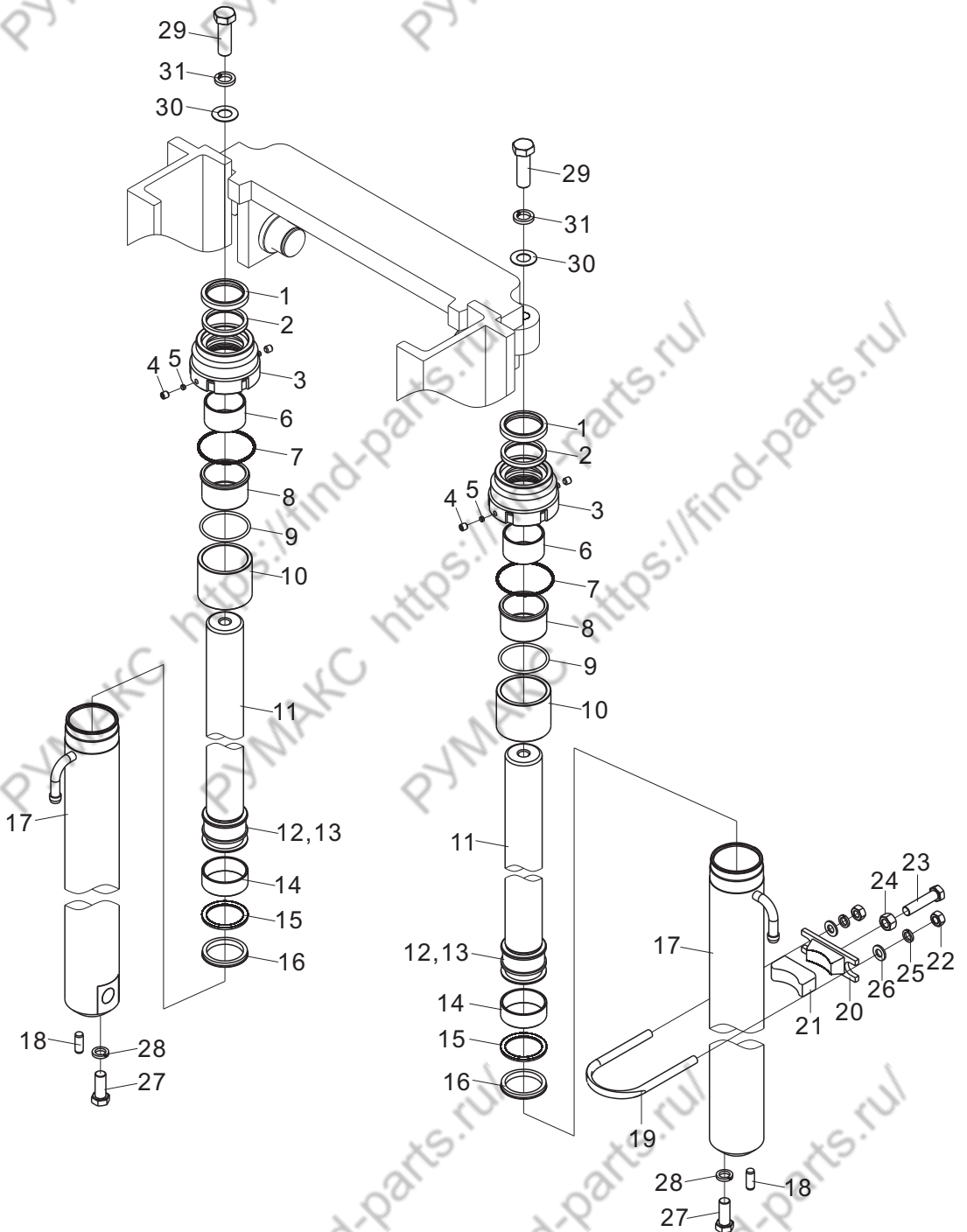


序号 Item No	货叉编码 Code, fork	货叉规格 Model, fork	备注 Remark
1	30080081200	920×100×35	
2	30080081201	1070×100×35	标准
3	30080081202	1220×100×35	
4	30080081203	1370×100×35	
5	30080081204	1520×100×35	
6	30080081205	1670×100×35	
7	30080081206	1820×100×35	
8	30080081207	1900×100×35	



起升油缸(基本型) / Lift cylinder (normal mast)

通用



## 起升油缸(基本型) / Lift cylinder (normal mast)

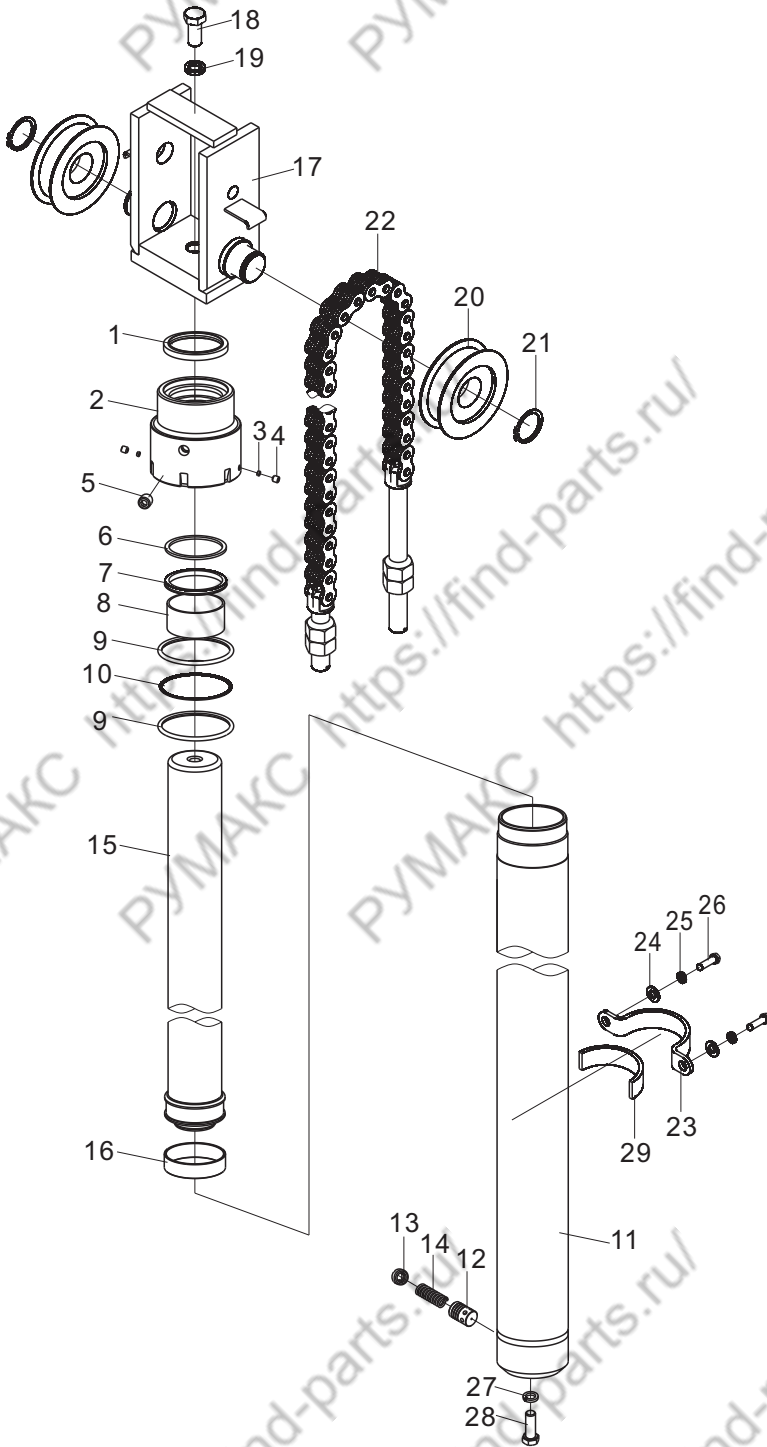
序号 Item No	编 码 Code	图 号 Part No	零部件名称 Description	数量 Qty	备 注 Remark
A	16600163050	LGG016SP300H	起升油缸 Lift cylinder	2	高度3000
1	56193004501		防尘圈36X48X7 Dustproof ring 36×48×7	2	
2	56187032401		轴用密封圈36X46X8 Seal ring 36×46×8	2	
3	36600030240	LGG016SP300H-01	缸盖 Cylinder cover	2	
4	51106211007	GB/T77	螺钉M8X8 Screw M8×8	4	
5	36600321010	LGG030SP300H-02	锁紧垫 Φ6X3 Locking gasket Φ6×3	4	
6	52500010901		钢背轴承36X40X30 Steel-backed bearing	2	
7	56900026903	AS568	O形圈50.47X2.62 O-ring 50.47×2.62	2	
8	36600370020	LGG016SP300H-02	支撑套 Support sheath	2	
9	56145009204	GB/T3452.1	O形圈34.5X2.65 O-ring 34.5×2.65	2	高度<4000时无
10	36600070770	LGG016SP400H-04	间隔套 Spacer	2	安装于高度4000-5000mm
	36600070780	LGG016SP550H-04	间隔套 Spacer	2	安装于高度5500-6000mm
11	36600044270	LGG016SP300H-03	活塞杆 Piston rod	2	高度3000
12	36600020130	LGG015SP300H-07	活塞 Piston	2	
13	51466240119	GB/T895.1	挡圈25 Snap ring 25	2	
14	56199021101		支承环40X45X20 Support ring 40×45×20	2	
15	56192069201		挡圈35X45X3 Snap ring 35×45×3	2	
16	56191008601		活塞密封圈35X45X7 Piston seal ring 35×45×7	2	
17	36600015530	LGG016SP300H.01	缸体 Cylinder body	2	高度3000
18	51513131502	GB/T119.1A	圆柱销10X26 Cylindrical pin 10×26	2	
19	30080109600	LG0016BC.10-007	卡箍 Clamp	2	
20	30080185600	LG0016BC.10-008	卡箍座 Clamp seat	2	
21	30080113900	LG0016BC.10-009	橡胶垫 Rubber pad	2	
22	51307000919	GB/T6170	螺母M8 Nut M8	4	
23	51204111514	GB/T5783	螺栓M12X45 Bolt M12×45	2	
24	51307001119	GB/T6170	螺母M12 Nut M12	2	
25	51401090107	GB/T93	垫圈8 Washer 8	4	
26	51421090115	GB/T97.1	垫圈8 Washer 8	4	
27	51207115314	GB/T5786	螺栓M12X1.25X35 Bolt M12×1.25×35	2	
28	51401110107	GB/T93	垫圈12 Washer 12	2	
29	51207121414	GB/T5786	螺栓M14X1.5X40 Bolt M14×1.5×40	2	
30	30080154803	LG0016BC.10-010	调整垫 Adjusting gasket	2	0.5mm
	30080154804	LG0016BC.10-010	调整垫 Adjusting gasket	2	1.0mm
	30080154805	LG0016BC.10-010	调整垫 Adjusting gasket	2	2.0mm
31	51401120107	GB/T93	垫圈14 Washer 14	2	





# 前起升油缸 / Front lift cylinder

通用





## 前起升油缸/ Front lift cylinder

序号 Item No	编 码 Code	图 号 Part No	零 部 件 名 称 Description	数 量 Q'ty	备 注 Remark	
A	16600276430	LGG016SS435FH	二级前起升油缸	Front lift cylinder	1	二级高度3000
	16600276280	LGG016SS450FH	三级前起升油缸	Front lift cylinder	1	三级高度4500
1	56193000901		防尘圈70X84X8	Dustproof ring 70×84×8	1	
2	36600030350	LGG016SW300FH-01	缸盖	cylinder head	1	
3	36600321010	LGG030SP300H-02	锁紧垫	Locking gasket	2	
4	51106211007	GB/T77	螺钉M8X8	Screw M8×8	2	
5	56944000201	JB/ZQ4446	螺塞R1/4	Plug	1	
6	56192047701		挡圈70X80X3	Snap ring 70×80×3	1	
7	56187001701		轴用密封圈70X80X7	Seal ring 70×80×7	1	
8	52500008701		钢背轴承70X75X35	Steel-backed bearing	1	
9	56900005003	AS568	O形圈88.49X3.53	O-ring 88.49×3.53	2	
10	56192104701		挡圈89X94.4X1.2	Snap ring 89×94.4×1.2	1	
11	36600016470	LGG016SW300FH.01	缸体	Cylinder body	1	二级高度3000
	36600017530	LGG016SS450FH.01	缸体	Cylinder body	1	三级高度4500
12	36600330040	LGG016SW300RH-02	滑阀	Slide valve	1	
13	36600790030	LGG016SW300FH-02	螺钉	Screw	1	
14	36600190110	LGG016SW300FH-03	弹簧	Spring	1	
15	56199009001		支承环75X80X20	Support ring 75×80×20	1	
16	36600045920	LGG016SW300FH.02	活塞杆组件	Piston rod element	1	二级高度3000
	36600046900	LGG016SS450FH.02	活塞杆组件	Piston rod element	1	三级高度4500
17	30080018100	LG0016BC.10A.08	支架焊合	Bracket weldment	1	
18	51207131514	GB/T5786	螺栓M16X1.5X45	Bolt M16×1.5×45	1	
19	51401130107	GB/T93	垫圈16	Washer 16	1	
20	30082185700	LG0030D.10-014	链轮	Chain wheel	2	
21	51453350107	GB/T894.1	挡圈40	Snap ring 40	2	
22	30080080116	LG0016BC.10A.09	链条总成LH1223	Chain assembly	2	二级高度3000
	30080080155	LG0016BC.10B.02	链条总成LH1223	Chain assembly	2	三级高度4500
23	30080144100	LG0016BC.10B-002	固定夹	Fixed clip	1	
24	51421100115	GB/T97.1	垫圈10	Washer 10	2	
25	51401100107	GB/T93	垫圈10	Washer 10	2	
26	51204101014	GB/T5783	螺栓M10X20	Bolt M10×20	2	
27	51401110107	GB/T93	垫圈12	Washer 12	1	
28	51207115314	GB/T5786	螺栓M12X1.25X35	Bolt M12×1.25×35	1	
29	30082113901	LG0030D.10A.02-003	橡胶垫	Rubber pad	1	

## 前起升油缸参数/ Front lifting cylinder parameter

### 二级全自由

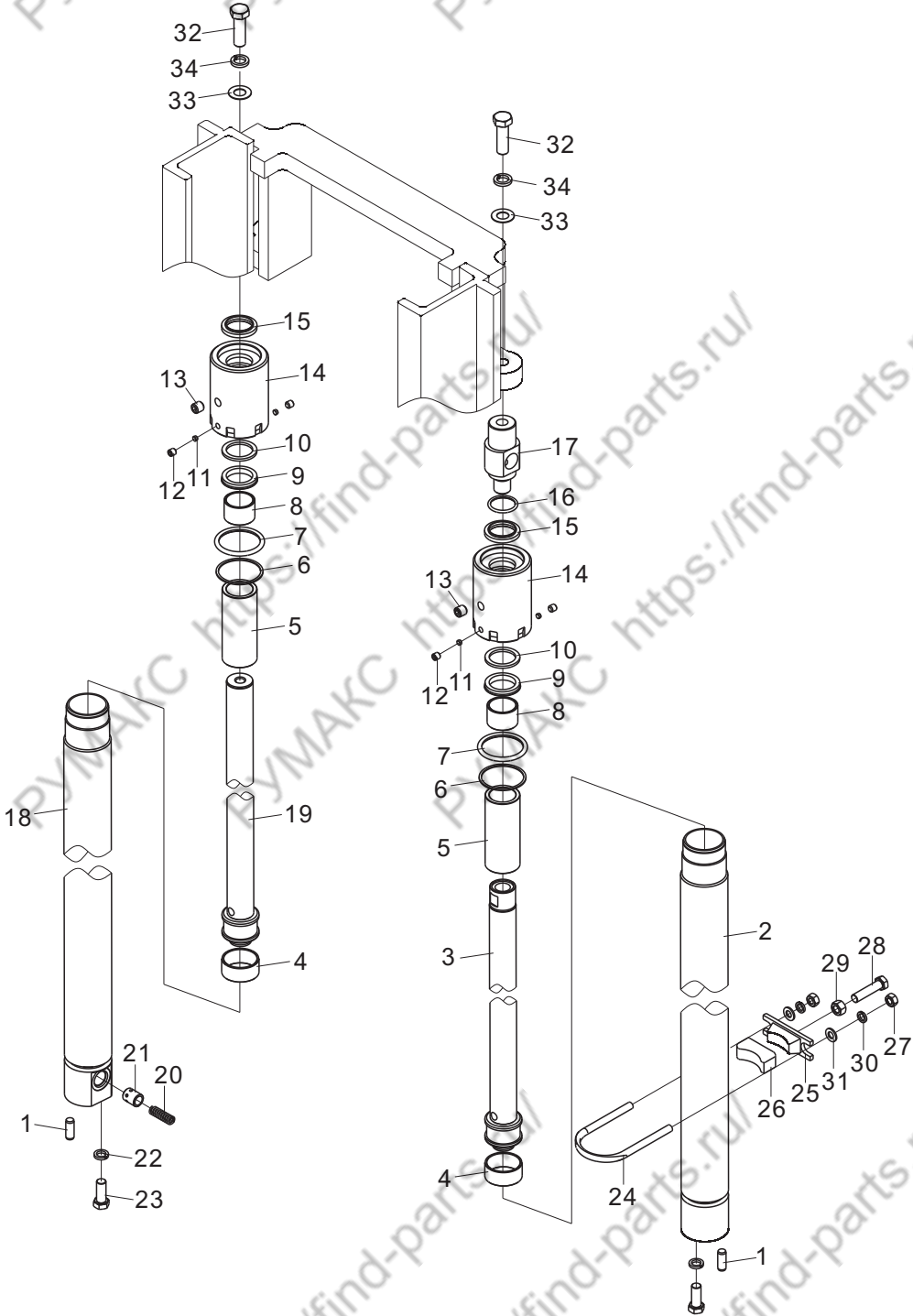
油缸编码 Code ,cylinder	起升高度 Lifting height	活塞杆组件 Piston rod	缸体 Cylinder body	链条编码 Code,chain	链条节点 Leaf,chain	备注 Remark
16600276130	2000	36600045890	36600016440	30080080161	61	
16600276140	2500	36600045900	36600016450	30080080137	75	
16600276270	2750	36600046890	36600017520	30080080136	71	
16600276430	3000	36600045920	36600016470	30080080116	77	标准
16600276440	3300	36600045930	36600016480	30080080100	85	
16600276290	3500	36600046910	36600017540	30080080122	89	
16600276300	3750	36600046920	36600017550	30080080102	97	
16600276200	4000	36600045960	36600016510	30080080139	105	
16600276220	4500	36600045980	36600016530	30080080123	101	
16600276210	4250	36600045970	36600016520			选用
16600276230	4750	36600045990	36600016540			选用
16600276240	5000	36600046000	36600016550			选用
16600276250	5500	36600046010	36600016560			选用
16600276260	6000	36600046020	36600016570			选用

### 三级全自由

油缸编码 Code ,cylinder	起升高度 Lifting height	活塞杆组件 Piston rod	缸体 Cylinder body	链条编码 Code,chain	链条节点 Leaf,chain	备注 Remark
16600276270	4000	36600046890	36600018230	30080080120	73	
16600276430	4350	36600046900	36600018240	30080080154	79	
16600276280	4500	36600046910	36600017520	30080080155	81	标准
16600276440	4800	36600046920	36600017530	30080080158	87	
16600276290	5000	36600046930	36600017830	30080080101	91	
16600276300	5400	36600045920	36600017540	30080080156	99	
16600276310	6000	36600045930	36600017550	30080080104	111	
16600276450	6500	36600045980	36600017560	30080080143	121	
16600276510	3300	36600047370	36600016470			选用
16600276500	3600	36600047360	36600016480			选用
16600276320	4700	36600047040	36600016530			选用

# 后起升油缸(二级全自由) / Rear lift cylinder (full free 2-stage mast)

通用



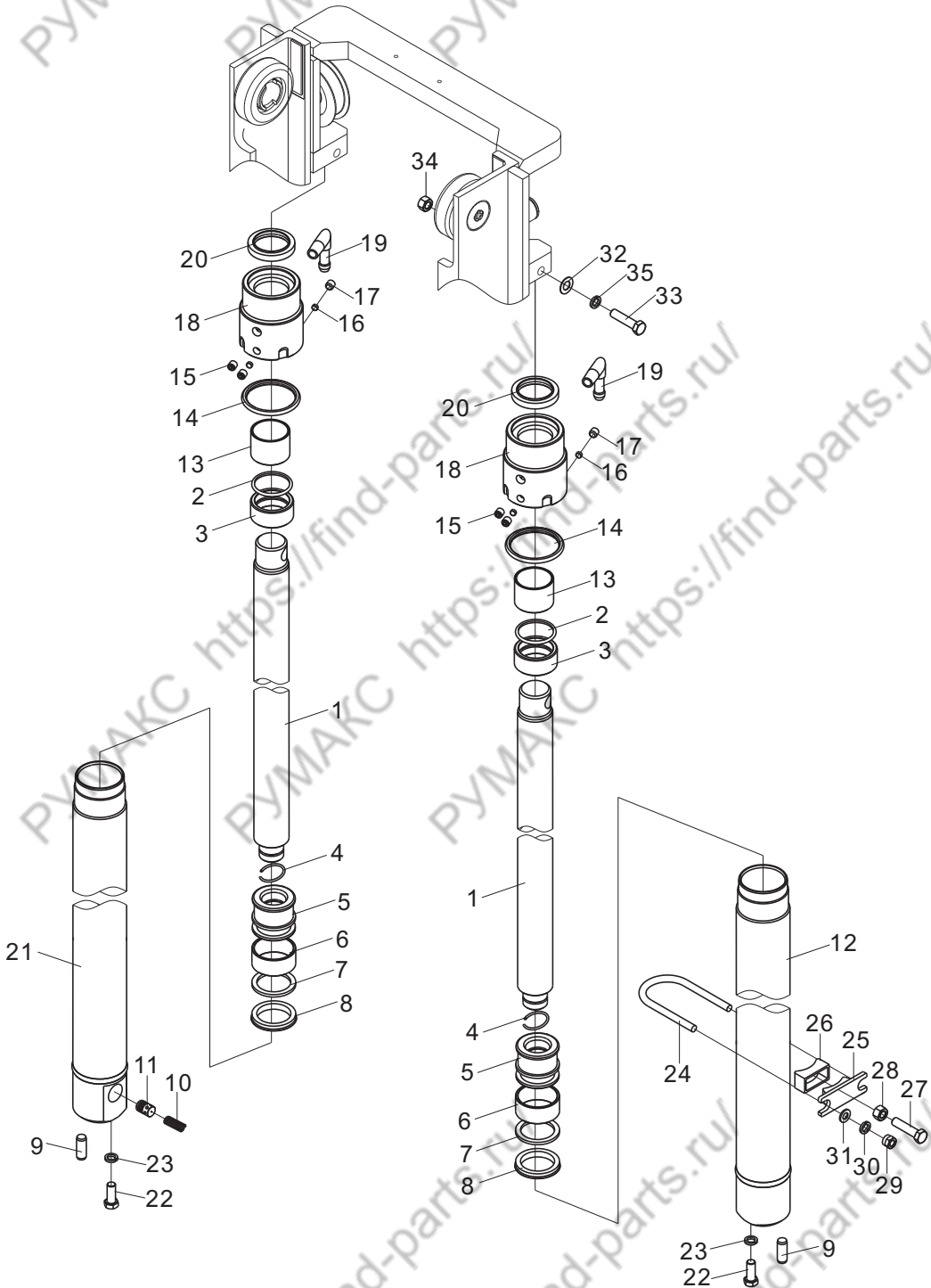
## 后起升油缸(二级全自由) / Rear lift cylinder (full free 2-stage mast)

序号 Item No	编 码 Code	图 号 Part No	零 部 件 名 称 Description	数量 Q'ty	备 注 Remark
A	16600162040	LGG016SW300LH	二级后左起升缸 Left lift cylinder	1	高度3000
B	16600162180	LGG016SW300RH	二级后右起升缸 Right lift cylinder	1	高度3000
1	51513131502	GB/T119.1	圆柱销10X26 Cylindrical pin	2	
2	36600016610	LGG016SW300LH.01	左缸体 Left cylinder body	1	高度3000
3	36600046080	LGG016SW300LH.02	活塞杆组件 Piston rod element	1	高度3000
4	56199021101		支承环40X45X20 Support ring 40×45×20	2	
5	36600070860	LGG016SW400LH-02	间隔套 Spacer	2	
6	56192104901		挡圈51X56.4X1.5 Snap ring 51×56.4×1.5	2	
7	56900012303	AS568	O形圈50.39X3.53 O-ring 50.39×3.53	2	
8	52500002301		钢背轴承32X36X25 Steel-backed bearing	2	
9	56187045901		轴用密封圈32X42X8 Seal ring 32×42×8	2	
10	56192104801		挡圈32X42X3 Snap ring 32×42×3	2	
11	51106211007	GB/T77	螺钉M8X8 Screw M8×8	4	
12	36600321010	LGG030SP300H-02	锁紧垫 Locking gasket	4	
13	56944000101	JB/ZQ4446	螺塞R1/8 Plug	2	
14	36600030360	LGG016SW300LH-02	缸盖 Cylinder cover	2	
15	56185004101		防尘圈32X52X8 Dustproof ring 32×52×8	2	
16	56908017904	JISB2401	O形圈22X2.4 O-ring 22×2.4	1	
17	36600240220	LGG016SW300LH-01	杆头 Rod head	1	
18	36600016750	LGG016SW300RH.01	右缸体 Right cylinder body	1	高度3000
19	36600046220	LGG016SW300RH.02	活塞杆组件 Piston rod	1	高度3000
20	36600192010	LGG030SL300RH-02	滑阀弹簧 Slide valve spring	1	
21	36600330040	LGG016SW300RH-02	滑阀 Spring	1	
22	51207115314	GB/T5786	螺栓M12X1.25X35 Bolt M12×1.25×35	2	
23	51401110107	GB/T93	垫圈12 Washer	2	
24	30080109600	LG0016BC.10-007	卡箍 Clamp	2	
25	30080185600	LG0016BC.10-008	卡箍座 Clamp seat	2	
26	30080113900	LG0016BC.10-009	橡胶垫 Rubber pad	2	
27	51307000919	GB/T6170	螺母M8 Nut M8	4	
28	51203111514	GB/T5783	螺栓M12X45 Bolt M12×45	2	
29	51307001119	GB/T6170	螺母M12 Nut M12	2	
30	51401090107	GB/T93	垫圈8 Washer 8	4	
31	51421090115	GB/T97.1	垫圈8 Washer 8	4	
32	51204133714	GB/T5783	螺栓M16X40 Bolt M16×40	2	
33	30080154803	LG0016BC.10-010	调整垫 Adjusting gasket	2	0.5mm
	30080154804	LG0016BC.10-010	调整垫 Adjusting gasket	2	1.0mm
	30080154805	LG0016BC.10-010	调整垫 Adjusting gasket	2	2.0mm
34	51401130107	GB/T93	垫圈16 Washer 16	2	



# 后起升油缸(三级全自由) / Rear lift cylinder (full free 3-stage mast)

通用





## 后起升油缸(三级全自由) / Rear lift cylinder (full free 3-stage mast)

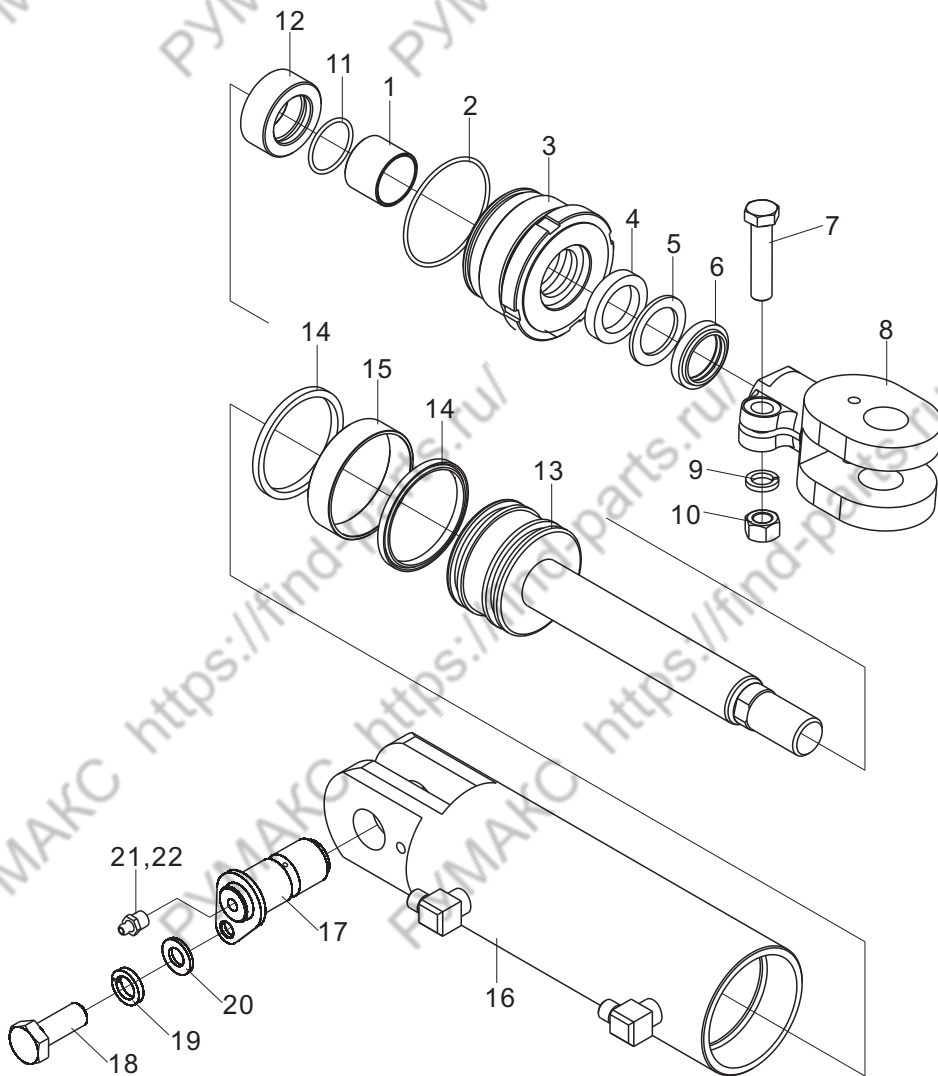
序号 Item No	编 码 Code	图 号 Part No	零部件名称 Description		数量 Q'ty	备 注 Remark
A	16600163320	LGG016SH450LH	三级后左起升缸	Left lift cylinder	1	高度4500
B	16600163370	LGG016SH450RH	三级后右起升缸	Right lift cylinder	1	高度4500
1	36600046950	LGG016SH450LH-01	活塞杆	Piston rod	2	高度4500
2	56145009204	GB/T3452.1	0形圈34.5X2.65	O-ring 34.5×2.65	2	
3	36600070940	LGG016SH450LH-02	间隔套	Spacer	2	
4	51466240119	GB/T895.1	挡圈25	Snap ring 25	2	
5	36600020130	LGG015SP300H-07	活塞	Piston	2	
6	56199021101		支承环40X45X20	Pivot ring 40×45×20	2	
7	56192069201		挡圈35X45X3	Snap ring 35×45×3	2	
8	56191008601		活塞密封圈35X45X7	Piston seal ring 35×45×7	2	
9	51513131502	GB/T119.1	圆柱销10X26	Cylindrical pin	2	
10	36600192010	LGG030SL300RH-02	弹簧	Spring	1	
11	36600330040	LGG016SW300RH-02	滑阀	Slide valve	1	
12	36600017580	LGG016SH450LH.01	左缸体	Left cylinder body	1	高度4500
13	52500010901		钢背轴承36X40X30	Steel-backed bearing	2	
14	56900026903	AS568	0形圈50.47X2.62	O-ring 50.47×2.62	2	
15	56944000201	JB/ZQ4446	螺塞R1/4	Plug	2	
16	36600321010	LGG030SP300H-02	锁紧垫Φ6X3	Locking gasket Φ6×3	4	
17	51106211007	GB/T77	螺钉M8X8	Screw M8×8	4	
18	36600030400	LGG016SH450LH-03	缸盖	Cylinder cover	2	
19	36600361010	LGG035SP300LH-01	回气接头	Connector	2	
20	56193004501		防尘圈36X48X7	Dustproof ring 36×48×7	2	
21	36600017630	LGG016SH450RH.01	右缸体	Right cylinder body	1	高度4500
22	51207115314	GB/T5786	螺栓M12X1.25X35	Bolt M12×1.5×35	2	
23	51401110107	GB/T93	垫圈12	Washer 12	2	
24	30080109600	LG0016BC.10-007	卡箍	Clamp	2	
25	30080185600	LG0016BC.10-008	卡箍座	Clamp seat	2	
26	30080113900	LG0016BC.10-009	橡胶垫	Rubber pad	2	
27	51204111514	GB/T5783	螺栓M12X45	Bolt M12×45	2	
28	51307001119	GB/T6170	螺母M12	Nut M12	2	
29	51307000919	GB/T6170	螺母M8	Nut M8	4	
30	51401090107	GB/T93	垫圈8	Washer 8	4	
31	51421090115	GB/T97.1	垫圈8	Washer 8	4	
32	30080154803	LG0016BC.10-010	调整垫	Adjusting gasket	2	0.5mm
	30080154804	LG0016BC.10-010	调整垫	Adjusting gasket	2	1.0mm
	30080154805	LG0016BC.10-010	调整垫	Adjusting gasket	2	2.0mm
33	51203122014	GB/T5782	螺栓M14X70	Bolt M14×40	2	
34	51307001219	GB/T6170	螺母M14	Nut M14	2	
35	51401120107	GB/T93	垫圈14	Washer 14	2	





## 倾斜油缸总成/Tilt cylinder assembly

通用



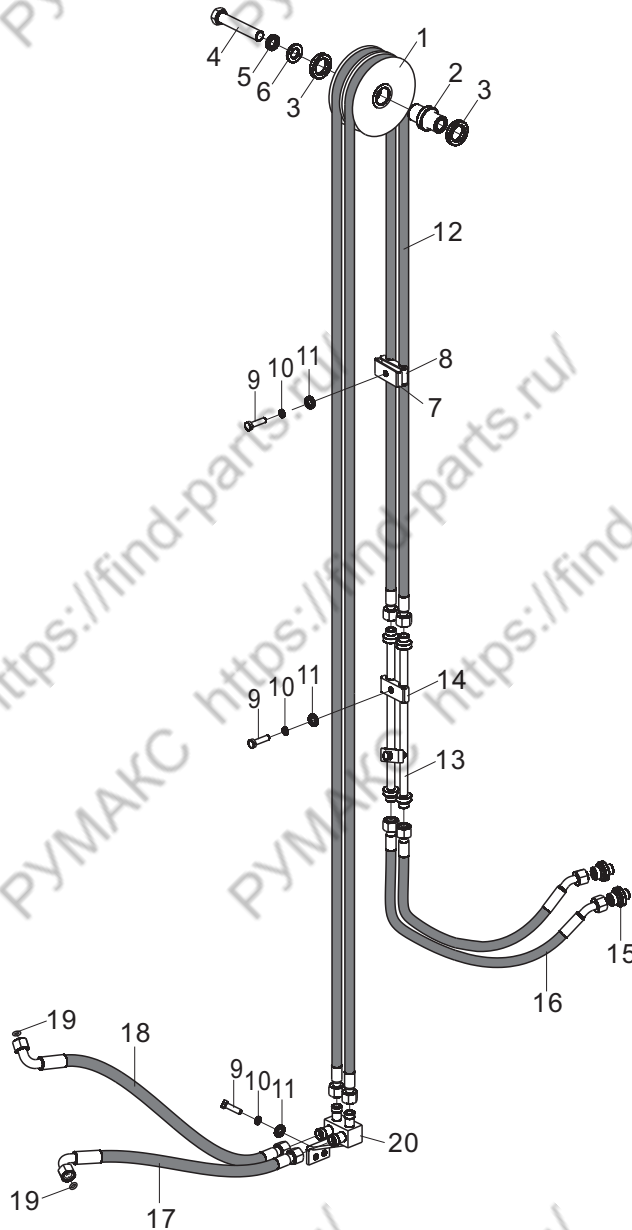
### 倾斜油缸参数/Tilt cylinder Parameter

左缸 Left cylinder	起升高度 Lifting height	前/后倾角 Tilt angle	活塞杆 Piston rod	间隔套 Spacer	备注 Remark
16600017190	$h < 3.6\text{m}$	$6^{\circ}\text{-}12^{\circ}$	36600041011	—	
16600017160	$3.6\text{m} \leq h < 4.5\text{m}$	$6^{\circ}\text{-}6^{\circ}$	36600047400	—	
16600017170	$4.5\text{m} \leq h < 5.5\text{m}$	$3^{\circ}\text{-}6^{\circ}$	36600047400	36600071030	
16600017180	$5.5\text{m} \leq h$	$3^{\circ}\text{-}3^{\circ}$	36600047410	36600071030	



门架侧移管路(基本型) / Side shifting pipe mast(normal mast)

通用

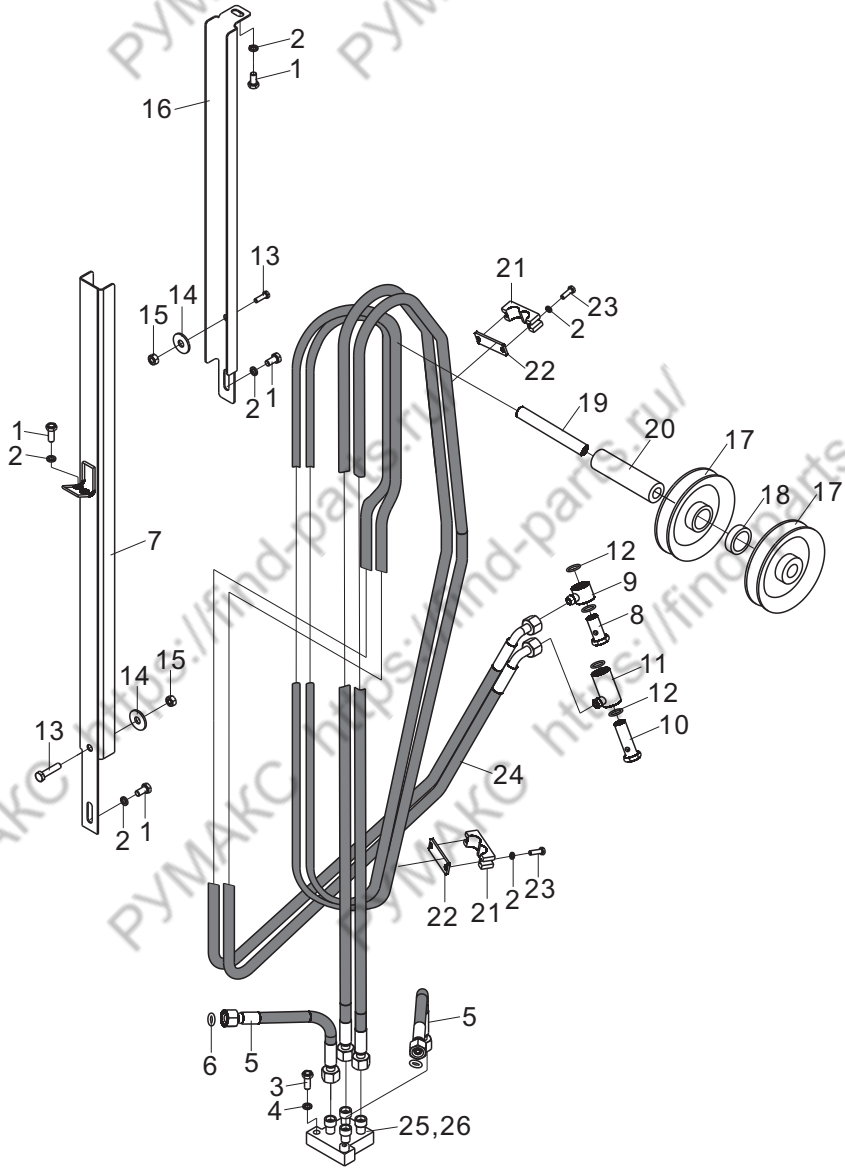


高度 Lifting height	2000	2250	2500	2750	3000	3300	3500	3750
序号12胶管 Hose, NO.6	17272008630	17272008631	17272008632	17272008633	17272008634	17272008635	17272008636	17272008637
高度 Lifting height	4000	4250	4500	4750	5000	5500	6000	
序号12胶管 Hose, NO.6	17272008640	17272008641	17272008642	17272008643	17272008644	17272008645	17272008646	
备注 Remark								



# 门架侧移管路(二级全自由) / Side shifting pipe mast (full free 2-stage mast)

通用

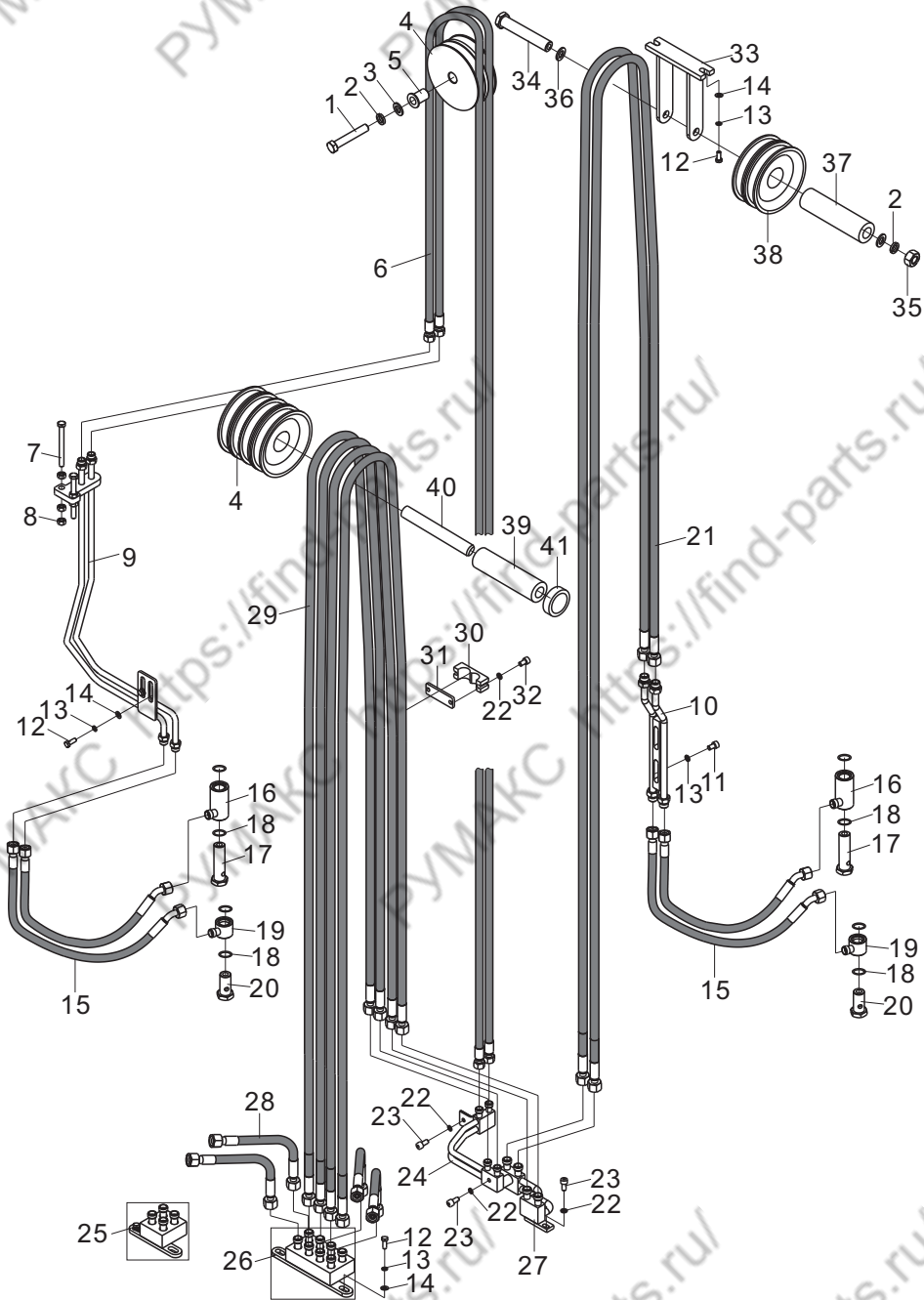


高度 Lifting height	2000	2500	2750	3000	3300	3500
序号7导向槽 Guide slot, NO.7	30080083800	30080083801	30080083802	30080083803	30080083804	30080083805
序号16导向槽 Guide slot, NO.16	30080184656	30080184657	30080184658	30080184659	30080184660	30080184661
序号24胶管 Hose, NO.24	17272005695	17272005696	17272005697	17272005698	17272005699	17272005700
高度 Lifting height	3750	4000	4500			
序号7导向槽 Guide slot, NO.7	30080083806	30080083807	30080083809			
序号16导向槽 Guide slot, NO.16	30080184662	30080184663	30080184665			
序号24胶管 Hose, NO.24	17272005701	17272005702	17272005704			



门架侧移管路(三级全自由) / Side shifting pipe mast (full free 3-stage mast)

通用



高度 Lifting height	4000	4350	4500	4800	5000	5400	6000	6500
序号6胶管 Hose, NO.6	17272009549	17272009557	17272009550	17272009551	17272009552	17272009553	17272009554	17272009555
序号21胶管 Hose, NO.21	17272009557	17272009558	17272009559	17272009552	17272009553	17272009560	17272009561	17272009562
序号29胶管 Hose, NO.29	17272009549	17272009563	17272009564	17272009557	17272009550	17272010118	17272009559	17272009552



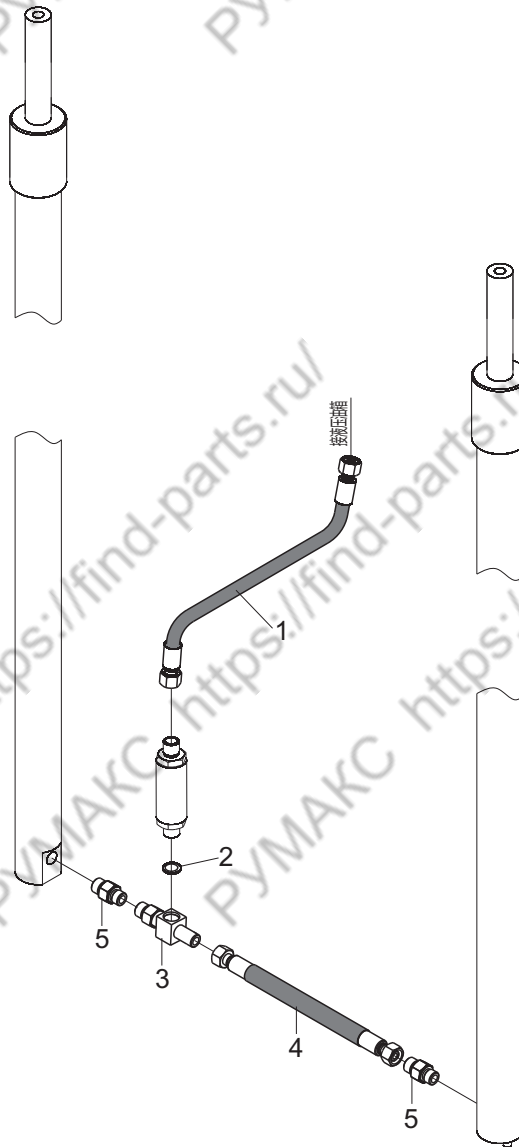
门架侧移管路(三级全自由) / Side shifting pipe mast (full free 3-stage mast)

序号 Item No	编 码 Code	图 号 Part No	零部件名称 Description	数量 Q'ty	备 注 Remark
1	51203112018	GB/T5783	螺栓M12X70	Bolt M12×70	1
2	51401110107	GB/T93	垫圈12	Washer 12	1
3	51420110121	GB/T96.1	垫圈12	Washer 12	1
4	30080185200	LG0016BC.10A.02-003	滑轮	Pulley	4 四联6件
5	30080122301	LG0016BC.10B.11-002	轴套	Sleeve	1
6	17272009550	LG0016BC.10B.11.01	胶管总成	Hose assembly	2 高度4500
7	51204102614	GB/T5783	螺栓M10X100	Bolt M10×100	2
8	51307001019	GB/T6170	螺母M10	Nut M10	6
9	30080013310	LG0016BC.10B.11.02	钢管焊接	Steel tube Weldment	1
10	30080013311	LG0016BC.10B.11.03	钢管焊接	Steel tube Weldment	1 四联时用
11	51139210605	GB/T70.1	螺钉M8X30	Screw M8×30	4 四联
12	51204091014	GB/T5783	螺栓M8X20	Bolt M8×20	4 四联6件
13	51401090107	GB/T93	垫圈8	Washer 8	4 四联9件
14	51421090115	GB/T97.1	垫圈8	Washer 8	2 四联
15	17272009556	LG0016BC.10B.11.04	胶管总成	Hose assembly	2 四联4件
16	30012071605	LG0016BC.10A.02.03	铰接接头焊接	Hinged connector weldment	1 四联2件
17	37201000429	LG0016BC.10A.02-001	螺栓	Bolt	1 四联2件
18	56145005701	GB/T3452.1	O形圈20X2.65	O-ring 20×2.65	2 四联4件
19	30012071606	LG0016BC.10A.02.04	铰接接头焊接	Hinged connector weldment	1 四联2件
20	37201000430	LG0016BC.10A.02-002	螺栓	Bolt	1 四联2件
21	17272009559	LG0016BC.10B.11.05	胶管总成	Hose assembly	2 四联时用
22	51401080107	GB/T93	垫圈6	Washer 6	4 四联7件
23	51139190405	GB/T70.1	螺钉M6X16	Screw M6×16	2 四联3件
24	30080013312	LG0016BC.10B.11.06	钢管焊接	Steel tube assembly	1
25	30080071700	LG0016BC.10A.02.07	接头焊接	Connector weldment	1 三联时用
26	30080071712	LG0016BC.10A.02.08	接头焊接	Connector weldment	1 四联时用
27	30080013313	LG0016BC.10B.11.07	钢管焊接	Steel tube assembly	1 四联时用
28	17272005159	LG0016BC.10A.02.01	胶管总成	Hose assembly	2 四联4件
29	17272009564	LG0016BC.10B.11.08	胶管总成	Hose assembly	2 四联4件
30	30080107803	LG0016BC.10A.02-007	管夹	Clip	1 四联2件
31	30080110203	LG0016BC.10A.02-008	压板	Pressure plate	1 四联2件
32	51139190605	GB/T70.1	螺钉M6X25	Screw M6×25	2 四联4件
33	30082013800	LG0030D.10B.11.08	固定架焊接	Fixed bracket weldment	1 四联时用
34	51203112614	GB/T5782	螺栓M12X100	Bolt M12×100	1 四联时用
35	51307001119	GB/T6170	螺母M12	Nut M12	1 四联时用
36	51421110115	GB/T97.1	垫圈12	Washer 12	2 四联时用
37	30080186506	LG0016BC.10B.11-003	套筒	Sleeve	1 四联时用
38	30080185205	LG0016BC.10B.11-004	滑轮	Pulley	2 四联时用
39	30080186502	LG0016BC.10A.02-005	套筒	Sleeve	1
40	30080120201	LG0016BC.10A.02-004	轴	Shaft	1
41	30080186503	LG0016BC.10A.02-006	套筒	Sleeve	1 四联3件



门架起升管路(基本型) / Lift pipe mast(normal mast)

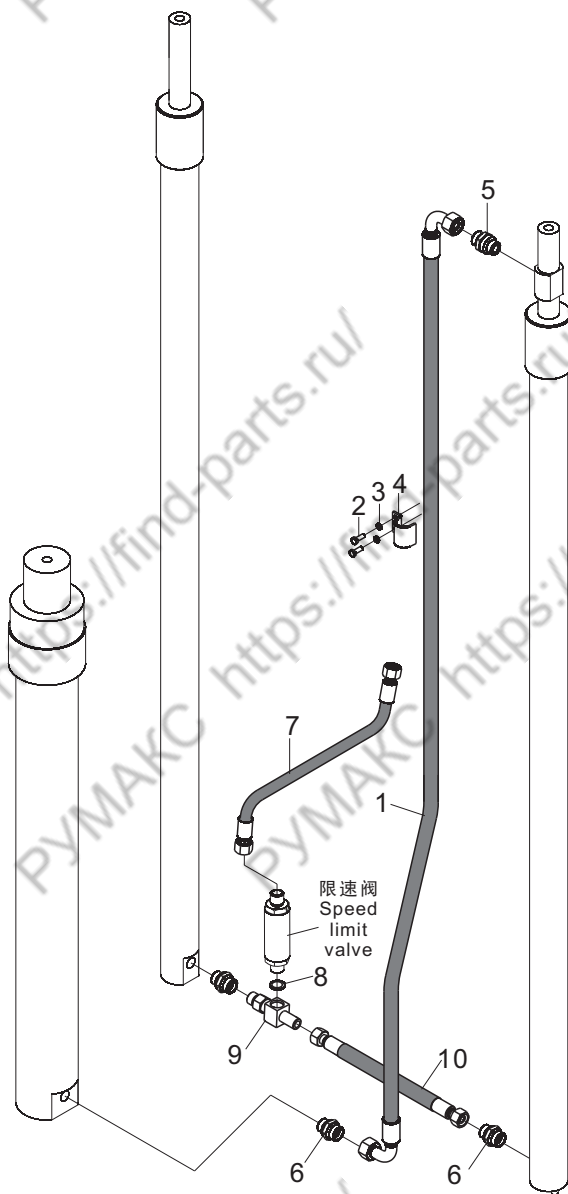
通用



序号 Item No	编 码 Code	图 号 Part No	零部件名称 Description	数量 Q'ty	备 注 Remark
1	17272002126	LG0016BC.10.06	胶管总成 Hose assembly	1	
2	56145004601	GB/T3452.1	O形圈16X2.65 O-ring 16×2.65	1	
3	30080071705	LG0016BC.10.11	接头焊接 Connector weldment	1	
4	17272005723	LG0016BC.10.10	胶管总成 Hose assembly	1	
	17601000239	LG0030B.12.12	过渡接头 Transition Transition	2	

门架起升管路(二级全自由)/Lift pipe mast (full free 2-stage mast)

通用

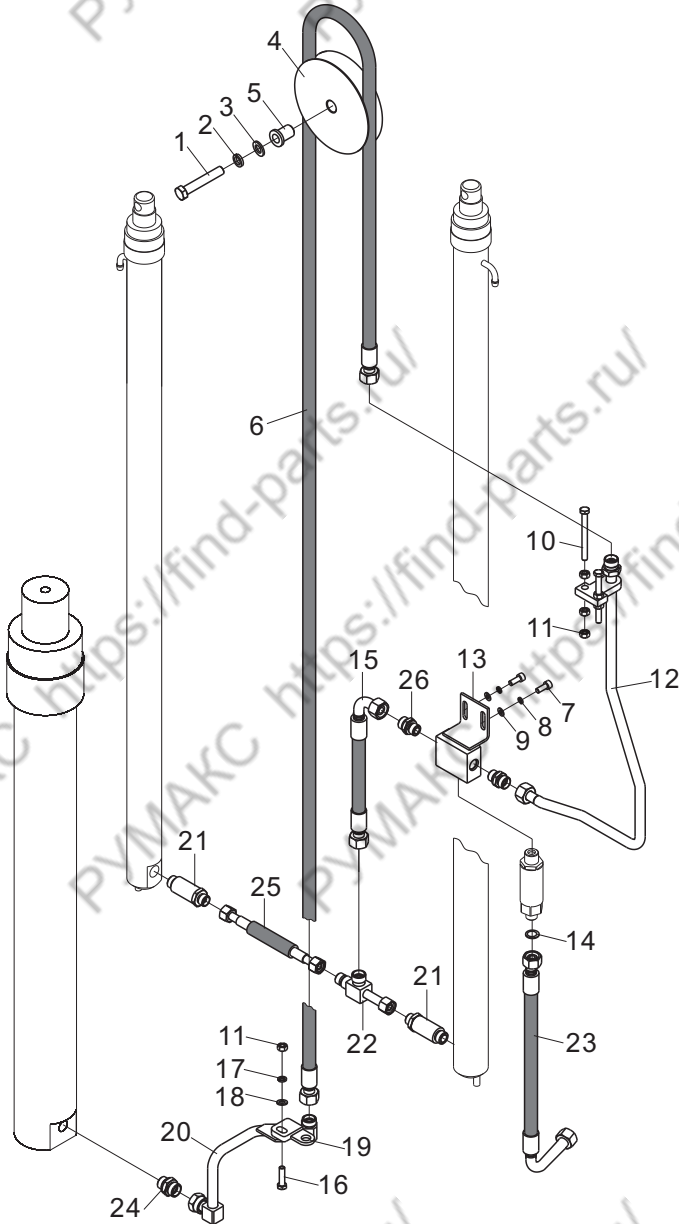


高度 Lifting height	2000	2500	2750	3000	3300	3500	3750
序号1胶管 HOse,NO.1	17272005709	17272005710	17272005711	17272005712	17272005713	17272005714	17272005715
高度 Lifting height	4000	4250					
序号1胶管 HOse,NO.1	17272005716	17272005718					
备注 Remark				标准			



门架起升管路(三级全自由) / Lift pipe mast (full free 3-stage mast)

通用



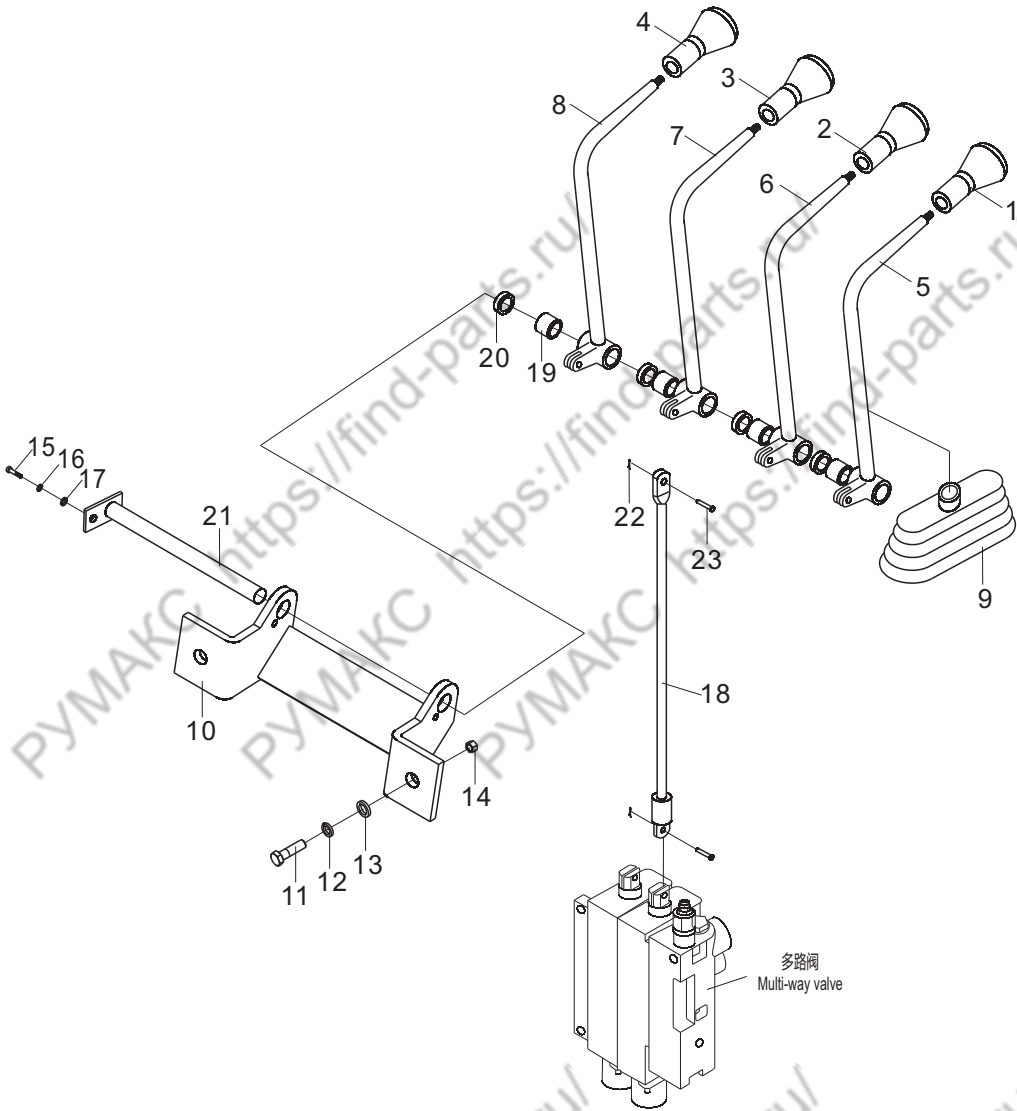
高度 Lifting height	4000	4350	4500	4800	5000	5400
序号6胶管 Hose, NO.6	17272009403	17272009546	17272009462	17272008801	17272009336	17272009547
高度 Lifting height	6000	6500				
序号6胶管 Hose, NO.6	17272009548	17272008546				
备注 Remark						

门架起升管路(三级全自由) / Lift pipe mast (full free 3-stage mast)

序号 Item No	编 码 Code	图 号 Part No	零部件名称 Description	数量 Q'ty	备 注 Remark
1	51210120215	GB/T5785	螺栓M14X1.5X50	Bolt M14×1.5×50	1
2	51401120107	GB/T93	垫圈14	Washer 14	1
3	51421120115	GB/T97.1	垫圈14	Washer 14	1
4	30080185203	LG0016BC.10B.10-001	滑轮	Pulley	1
5	30082135103	LG0016BC.10B.10-002	轴套	Sleeve	1
6	17272009462	LG0016BC.10B.10.01	胶管总成	Hose assembly	1 高度4500
7	51204091014	GB/T5783	螺栓M8X20	Bolt M8×20	2
8	51401090107	GB/T93	垫圈8	Washer 8	2
9	51421090115	GB/T97.1	垫圈8	Washer 8	2
10	51204102614	GB/T5783	螺栓M10X100	Bolt M10×100	2
11	51307001019	GB/T6170	螺母M10	Nut M10	7
12	30080013308	LG0016BC.10B.10.02	钢管焊合	Steel tube assembly	1
13	30080071713	LG0016BC.10B.10.03	三通焊合	T-connector	1
14	56145004601	GB/T3452.1	O形圈16X2.65	O-ring 16×2.65	1
15	17272002695	LG0016BC.10B.10.04	胶管总成	Hose assembly	1
16	51204101214	GB/T5783	螺栓M10X30	Bolt M10×30	1
17	51401100107	GB/T93	垫圈10	Washer 10	1
18	51421100115	GB/T97.1	垫圈10	Washer 10	1
19	30080182703	LG0016BC.10B.10-004	连接板	Connecting board	1
20	30080013309	LG0016BC.10B.10.05	钢管焊合	Steel tube assembly	1
21	17601001391	LG0016BC.10B.10-003	过渡接头	Transition connector	2
22	30080116705	LG0016BC.10B.10.06	三通焊合	T-connector	1
23	17272005375	LG0016BC.10B.10.07	胶管总成	Hose assembly	1
24	17601000239	LG0030B.12.12	过渡接头	Transition connector	1
25	17272005379	LG0016BC.10B.10.08	胶管总成	Hose assembly	1
26	17601000236	LG0016B.12.05-007	过渡接头	Transition connector	2

# 多路阀操纵 / Multi-way valve control

通用

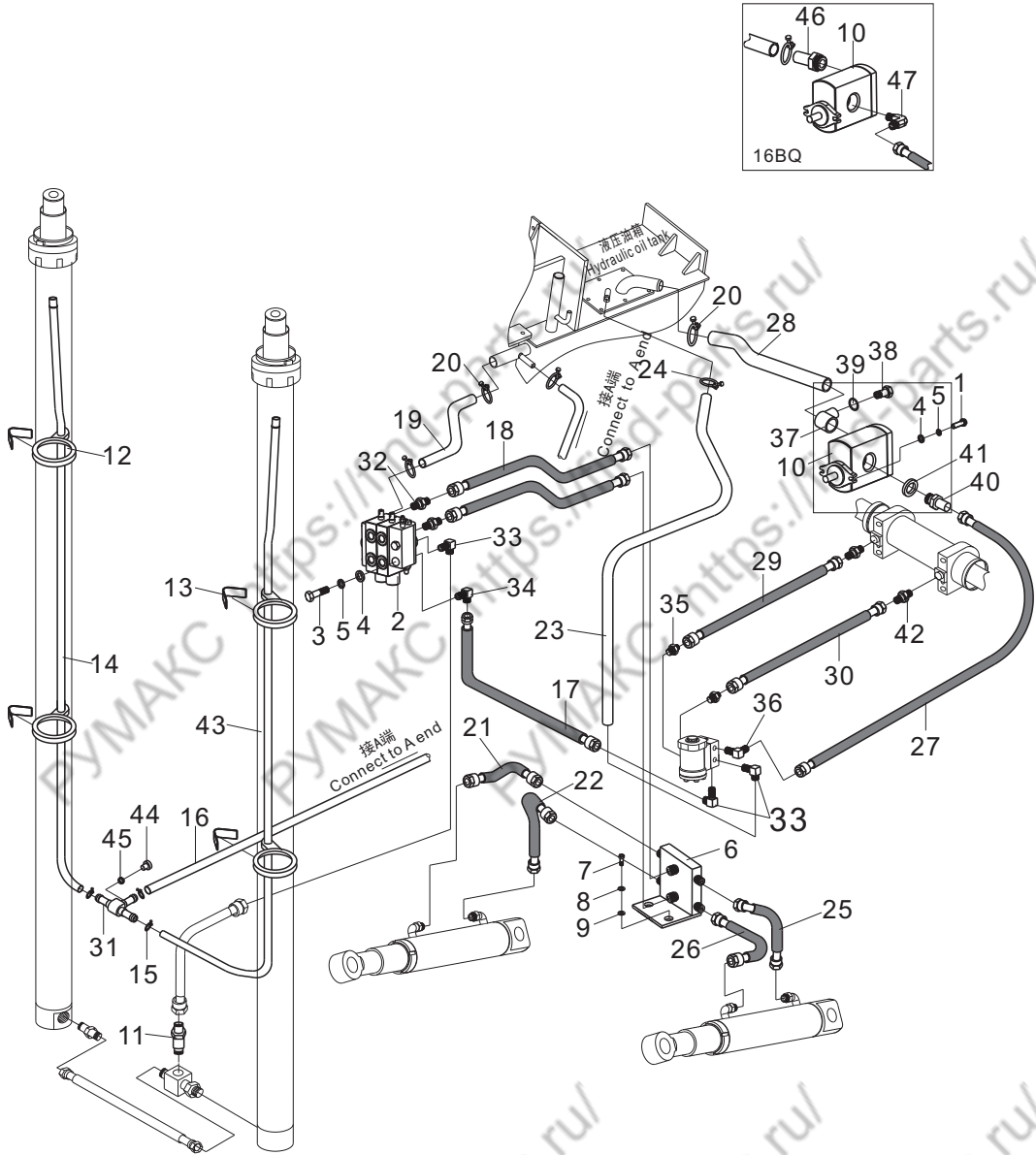


## 多路阀操纵/Multi-way valve control

序号 Item No	编 码 Code	图 号 Part No	零 部 件 名 称 Description	数 量 Q'ty	备 注 Remark
1	60207010080	LG0030D.11-001	手柄总成 Handle assembly	1	
2	60207010081	LG0030D.11-002	手柄总成 Handle assembly	1	
3	60207010082	LG0030D.11-003	手柄总成 Handle assembly	1	三联1只
4	60207010083	LG0030D.11-004	手柄总成 Handle assembly	1	四联1只
5	30011020609	LG0016B.11.01	操纵杆焊合 Control rod weldment	1	
6	30011020610	LG0016B.11.02	操纵杆焊合 Control rod weldment	1	
7	30011020611	LG0016B.11.03	操纵杆焊合 Control rod weldment	1	三联1只
8	30011020612	LG0016B.11.04	操纵杆焊合 Control rod weldment	1	四联1只
9	30011124901	LG0030B.11-001	防尘套 Dust cover	2	三联3只, 四联4只
10	30011048301	LG0016B.11.05	杆座焊合 Rod seat weldment	1	
11	51204101214	GB/T5783	螺栓M10X30 Bolt M10×30	2	
12	51401100107	GB/T93	垫圈10 Washer 10	2	
13	51421100115	GB/T97.1	垫圈10 Washer 10	4	
14	51307001019	GB/T6170	螺母M10 Nut M10	2	
15	51158170404	GB/T818	螺钉M5X12 Screw M5×12	1	
16	51401070107	GB/T93	垫圈5 Washer 5	1	
17	51421070115	GB/T97.1	垫圈5 Washer 5	1	
18	30011110502	LG0016B.11-001	连接板 Connecting rod	2	
19	30011148302	LG0030B.11-004	隔套 Distance sleeve	4	
20	30011106402	LG0030B.11-005	垫圈 Washer	3	三联4只, 四联5只
21	30011025010	LG0016B.11.06	销轴焊合 Pin shaft weldment	1	
22	51512061001	GB/T91	销2X20 Pin 2×20	4	三联6只, 四联8只
23	60905000023	30D-1100004	销轴 Pin shaft	4	三联6只, 四联8只

# 液压系统/Hydraulic system

通用





## 液压系统/Hydraulic system

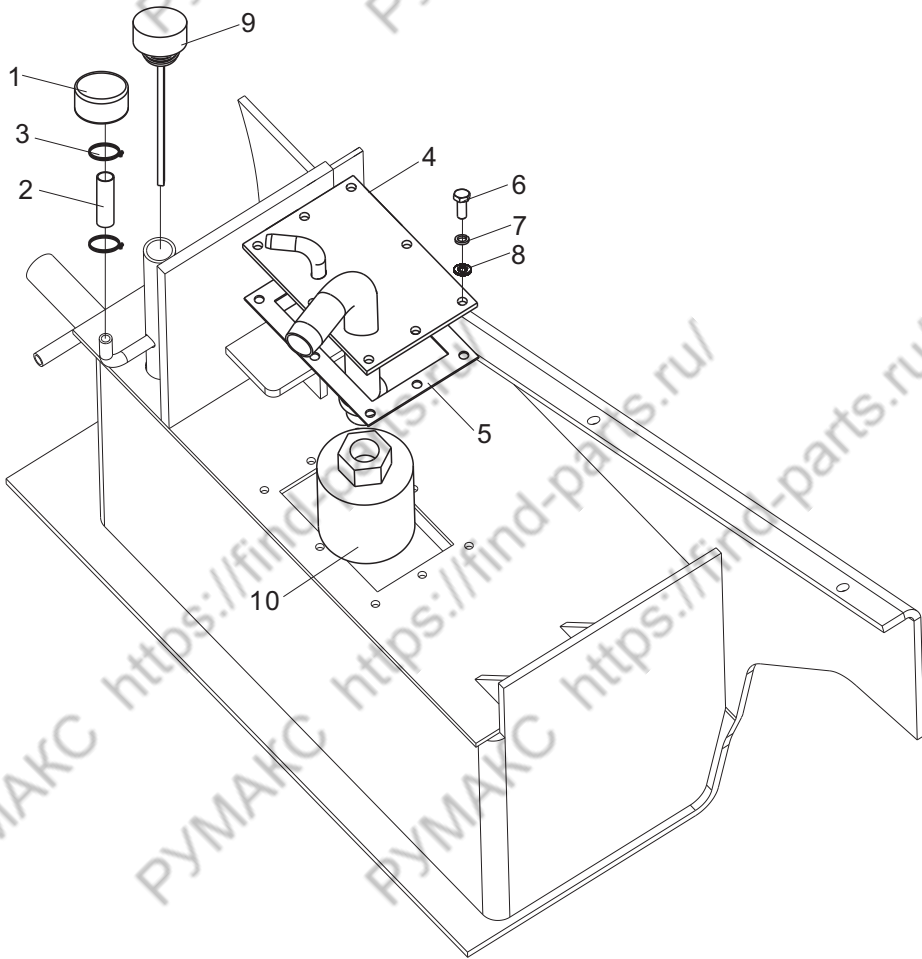
序号 Item No	编 码 Code	图 号 Part No	零 部 件 名 称 Description	数量 Q'ty	备 注 Remark	
1	51204101214	GB/T5783	螺栓M10X30	Bolt M10×30	2	
2	60304000450	LG0016B.12-002	多路阀	Multi-way valve	1	
3	51207105214	GB/T5786	螺栓M10X1.25X30	Bolt M10×1.25×30	3	
4	51421100115	GB/T97.1	垫圈10	Washer 10	5	
5	51401100107	GB/T93	垫圈10	Washer 10	5	
6	30012074201	LG0016B.12.02	分流块焊合	Distribution block weldment	1	
7	51204080914	GB/T5783	螺栓M6X16	Bolt M6×16	2	
8	51421080115	GB/T97.1	垫圈6	Washer 6	2	
9	51401080107	GB/T93	垫圈6	Washer 6	2	
10	60301000298	LG0016B.12-006	齿轮泵	Gear pump	1	16B,16BC 16BZ,16BJ
	60301000276	LG0020DR.12.06.01	齿轮泵	Gear pump	1	16BQ
11	60304000075	LG0016B.12.06	限速阀	Speed limit valve	1	
12	68080000004	20B-1202016	扎带5X350	Binding tape	8	
13	60911010924	LG0030D.12-020	回油管布夹	Oil return pipe cloth clip	4	
14	30012187929	LG0016B.12.01-005	塑料管	Plastic tube	1	
15	56171000101	JB/T8870	喉箍d16(10~16)	Hoop d16(10~16)	6	
16	30012187937	30D-1200017	塑料管	Plastic tube	1	
17	17272002274	LG0016B.12.01-017	胶管总成	Hose assembly	1	
18	17272001921	LG0016B.12.01-006	胶管总成	Hose assembly	2	
19	30012187902	LG0016B.12.01-007	回油管	Oil return pipe	1	
20	56171000601	JB/T8870	喉箍d50(32~50)	Hoop d50(32~50)	4	
21	17272005767	LG0016B.12.01-018	胶管总成	Hose assembly	1	
22	17272005770	LG0016B.12.01-021	胶管总成	Hose assembly	1	
23	30012187938	LG0016B.12.01-009	回油管	oil return pipe	1	
24	56171002301	JB/T8870	喉箍d25(16~25)	Hoop d25(16~25)	2	
25	17272005768	LG0016B.12.01-019	胶管总成	Hose assembly	1	
26	17272005769	LG0016B.12.01-020	胶管总成	Hose assembly	1	
27	17272002273	LG0016B.12.01-022	胶管总成	Hose assembly	1	
28	30012171006	LG0016B.12.01-012	吸油管	Oil return pipe	1	
29	17272002297	LG0016B.12.01-013	胶管总成	Hose assembly	1	
30	17272002298	LG0016B.12.01-014	胶管总成	Hose assembly	1	
31	30080116706	LG0015B.12-021	三通接头	T-connector	1	
32	17601000212	30D-1200001	过渡接头	Transition connector	2	
33	17601000296	30D-1216000	过渡接头	Transition connector	3	
34	17601000300	30D-1215000	过渡接头	Transition connector	1	
35	17601000211	LG0040D.12-004	过渡接头	Transition connector	2	

## 液压系统/Hydraulic system

序号 Item No	编 码 Code	图 号 Part No	零 部 件 名 称 Description	数 量 Q'ty	备 注 Remark
36	17601000562	LG0030B.12.13	过渡接头 Transition connector	1	
37	30012071600	20B-1210500	铰接接头焊合 Hinged connector weldment	1	16B,16BC 16BZ,16BJ
38	60909010062	20B-1210014	空心螺栓 Hollow bolt	1	16B,16BC 16BZ,16BJ
39	56147011501	JB/T982	组合垫圈24 Combination washer 24	1	16B,16BC 16BZ,16BJ
40	17601000327	20B-1210012	过渡接头 Transition connector	1	16B,16BC 16BZ,16BJ
41	56147011301	JB/T982	组合垫圈22 Combination washer 22	1	16B,16BC 16BZ,16BJ
42	17601000007	30D-1200027	过渡接头 Transition connector	2	
43	30012187936	LG0016B.12.01-002	塑料管 Plastic tube	1	
44	51204091314	GB/T5783	螺栓M8X35 Bolt M8×35	1	
45	51401090107	GB/T93	垫圈8 Washer 8	1	
46	32012108303	LG0020DR.12-005	过渡接头 Transition connector	1	16BQ
47	17601000007	30D-1200027	过渡接头 Transition connector	2	16BQ

## 液压油箱/ Hydraulic oil tank

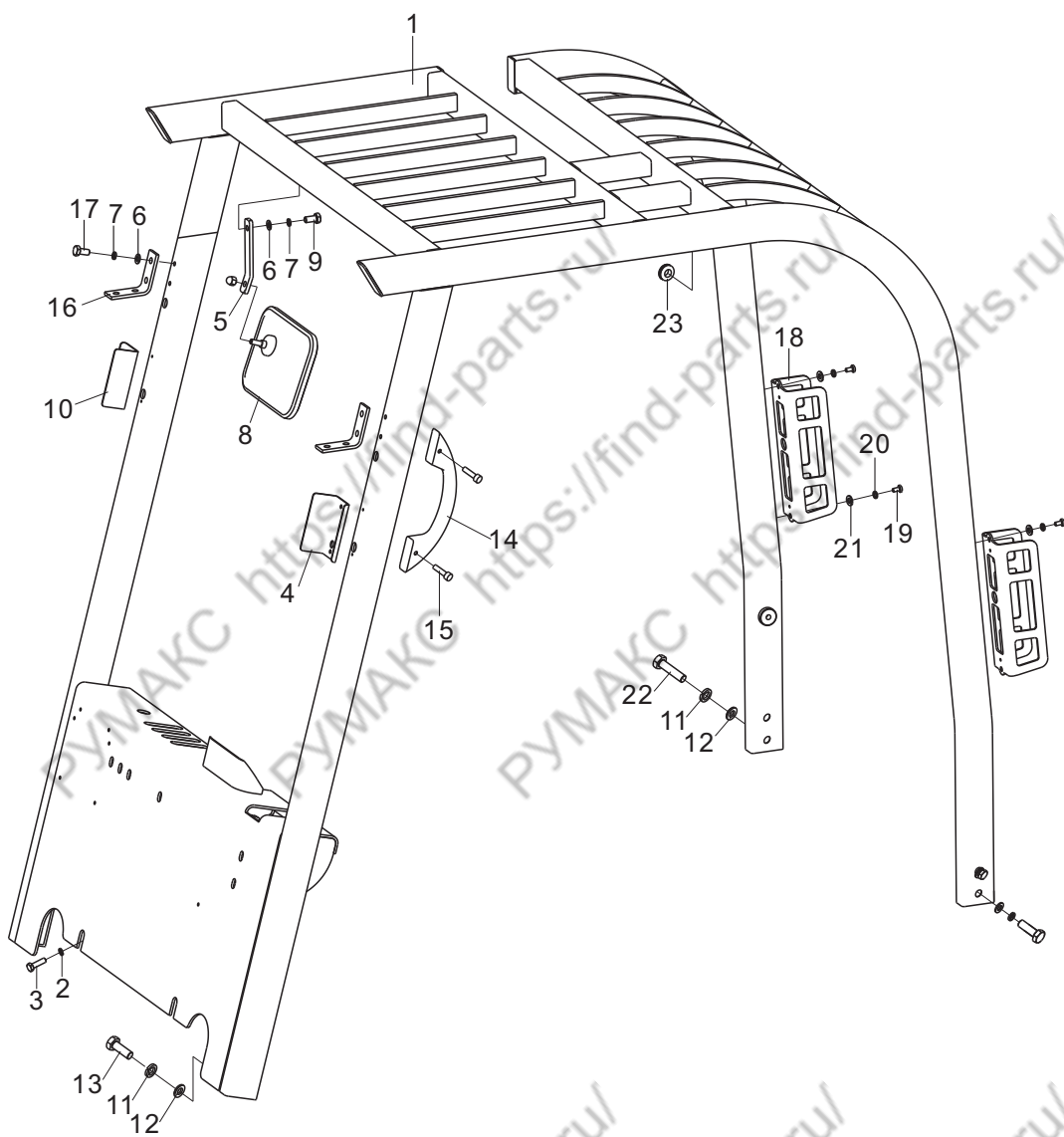
通用



序号 Item No	编 码 Code	图 号 Part No	零部件名称 Description	数量 Q'ty	备 注 Remark
1	30012071501	LG0100DT.12.04.03	呼吸器总成 Breather assembly	1	
2	30012109203	LG0060DT.12.11-001	塑料管 Plastic tube	1	
3	56171000101	JB/T8870	喉箍d16(10~16) Hoop d16(10~16)	2	
4	30012072806	LG0016B.12.03	液压油箱盖板焊合 Cover plate weldment	1	
5	30012113900	LG0016B.12.03-005	橡胶垫 Rubber gasket	1	
6	51204091014	GB/T5783	螺栓M8X20 Bolt M8×20	8	
7	51401090107	GB/T93	垫圈8 Washer 8	8	
8	51421090115	GB/T97.1	垫圈8 Washer 8	8	
9	30012026202	LG0016B.12.04	油尺总成 Oil dipstick assembly	1	
10	30012015102	LG0100DT.12.04.04	滤油器总成 Oil filter assembly	1	

# 护顶架/Overhead guard

通用

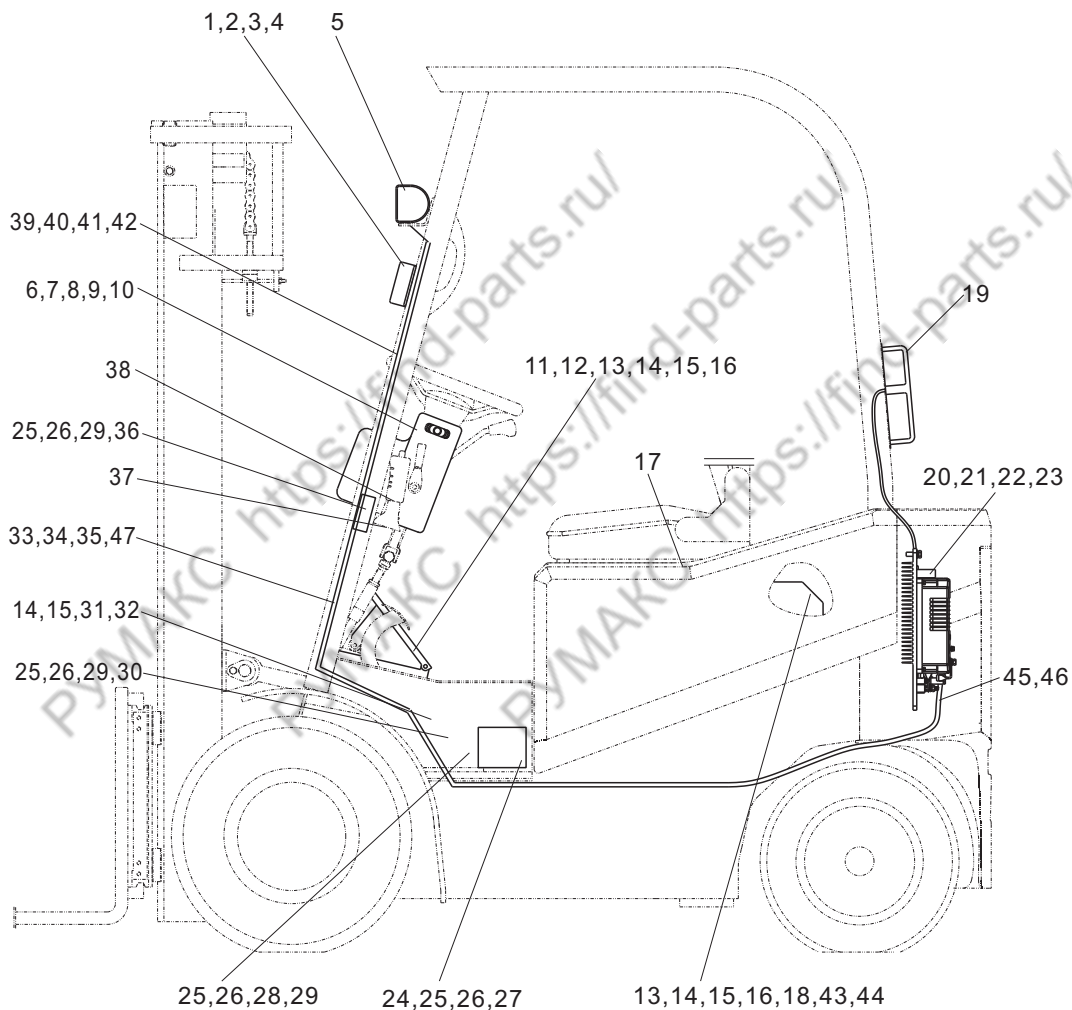


## 护顶架/Overhead guard

序号 Item No	编 码 Code	图 号 Part No	零 部 件 名 称 Description	数 量 Q'ty	备 注 Remark
1	30014058508	LG0016B.14.G1	护顶架焊合 Overhead guard weldment	1	
2	51420100121	GB/T96.1	垫圈10 Washer 10	2	
3	51204101014	GB/T5783	螺栓M10X20 Bolt M10×20	2	
4	30014115008	LG0030B.14-003	支架 Bracket	1	
5	30014115019	LG0030D.14-002	支架 Bracket	1	
6	51421090115	GB/T97.1	垫圈8 Washer 8	5	
7	51401090107	GB/T93	垫圈8 Washer 8	5	
8	60917010007	LG0030D.14-001	倒车镜 Rearview mirror	1	
9	51204091014	GB/T5783	螺栓M8X20 Bolt M8×20	1	
10	30014115009	LG0030B.14-004	支架 Bracket	1	
11	51401110107	GB/T93	垫圈12 Washer 12	8	
12	51421110115	GB/T97.1	垫圈12 Washer 12	8	
13	51204111214	GB/T5783	螺栓M12X30 Bolt M12×30	4	
14	30009156200	30D-0903000	拉手 Handle	1	
15	51139190605	GB/T70.1	螺钉M6X25 Screw M6×25	2	
16	30014115014	LG0030B.14-002	支架 Bracket	2	
17	51204090914	GB/T5783	螺栓M8X16 Bolt M8×16	4	
18	30014115013	LG0030B.14-001	支架 Bracket	2	
19	51158190304	GB/T818	螺钉M6X12 Screw M6×12	4	
20	51401080107	GB/T93	垫圈6 Washer 6	4	
21	51421080115	GB/T97.1	垫圈6 Washer 6	4	
22	51204111714	GB/T5783	螺栓M12X55 Bolt M12×55	4	
23	60980000270	30D-0900011	过线圈 Rubber ring	1	配警示灯时用

## 电气系统/ Electric system

LG16B,16BZ,16BQ,16BJ,18B





## 电气系统/Electric system

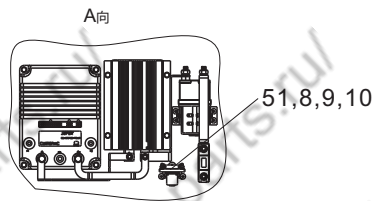
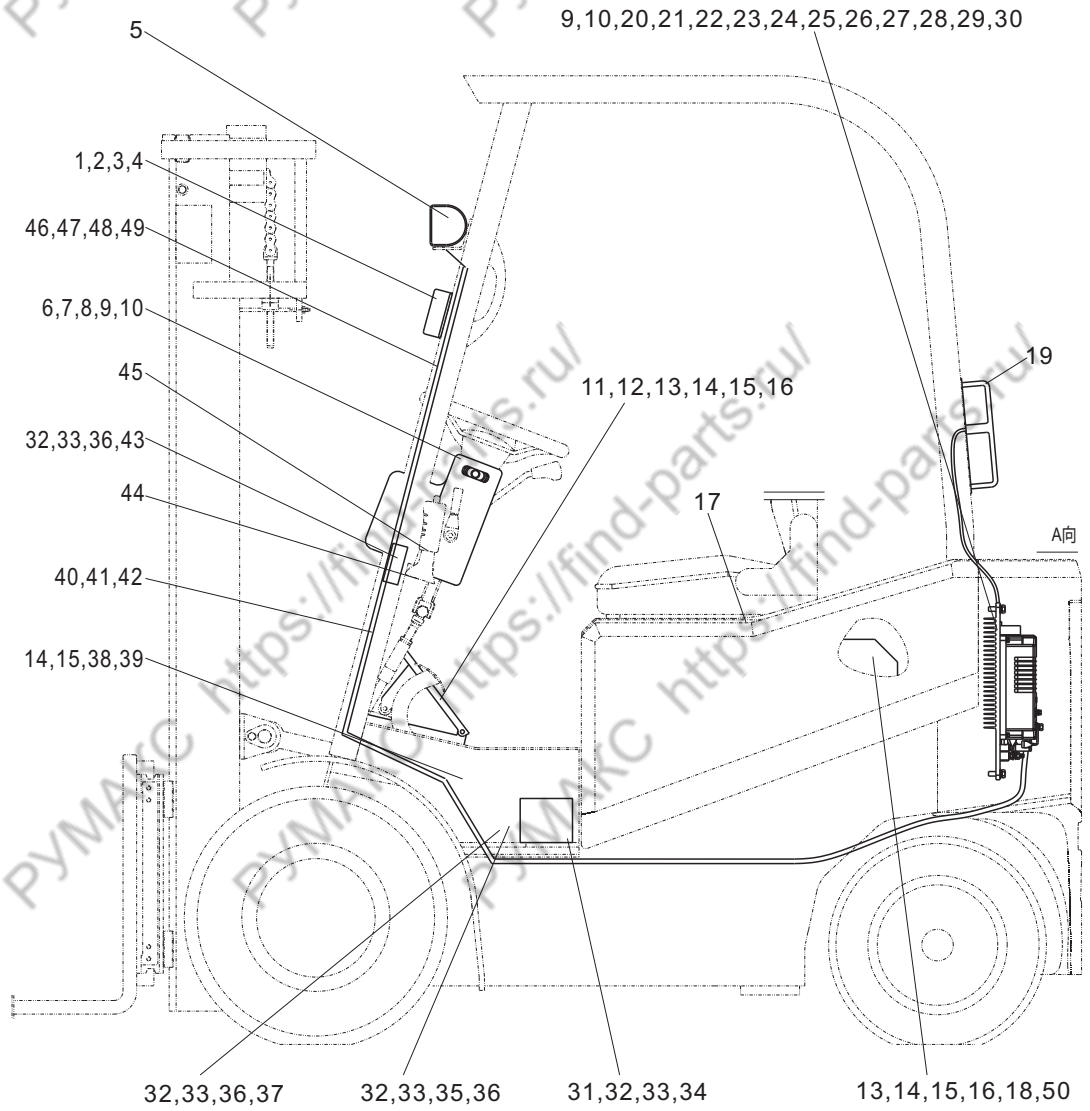
序号 Item No	编 码 Code	图 号 Part No	零 部 件 名 称 Description	数量 Q'ty	备 注 Remark	
1	30015880001	LG0016B.15.01	电气系统原理图	Electrical schematic diagram	1	16B
	30015880016	LG0016BZ.15.01	电气系统原理图	Electrical schematic diagram	1	16BZ
	30015880015	LG0025BQ.15.01	电气系统原理图	Electrical schematic diagram	1	16BQ
	30015880010	LG0016BJ.15.01	电气系统原理图	Electrical schematic diagram	1	16BJ
2	30015061017	LG0016B.15.24	车体线束	Vehicle body harness	1	16B
	30015061021	LG0025BZ.15.03	车体线束	Vehicle body harness	1	16BZ
	30015061020	LG0025BQ.15.03	车体线束	Vehicle body harness	1	16BQ
	30015061015	LG0016BJ.15.02	车体线束	Vehicle body harness	1	16BJ
3	30015064501	LG0016B.15.31	护顶架线束	Headguard harness	1	
4	30015069302	LG0016B.15.03	转向灯	Steering lamp	2	
5	30015064200	30D-1501000	工作灯	Working lamp	2	
6	30015163418	LG0016B.15.25	仪表总成	Combination Instrument assembly	1	16B,16BZ
	30015163417	LG0016BJ.15.05	仪表总成	Combination Instrument assembly	1	16BQ,16BJ
7	60405020199	LG0016B.15.06	组合开关	Combination switch	1	
8	51158170404	GB/T818	螺钉M5X12	Screw M5×12	4	
9	51421070115	GB/T97.1	垫圈5	Washer 5	4	
10	51401070107	GB/T93	垫圈5	Washer 5	4	
11	30015065003	LG0016B.15.22	加速踏板总成	Speedup pedal assembly	1	
12	60405020218	LG0016B.15.08	刹车灯开关	Break light switch	2	16BZ只1个
13	51204091114	GB/T5783	螺栓M8X25	Bolt M8×25	4	
14	51421090115	GB/T97.1	垫圈8	Washer 8	9	
15	51401090107	GB/T93	垫圈8	Washer 8	5	
16	51307000919	GB/T6170	螺母M8	Nut M8	4	
17	30015164501	LG0030B.15.14	座椅开关	Seat switch	1	
18	30015062701	LG0016B.15.10	电源插接器总成	Power connector assembly	1	16B,16BJ
	30015062711	LG0016BZ.15.05	电源插接器总成	Power connector assembly	1	16BZ,16BQ
19	30015064404	LG0016B.15.11	后组合灯	Rear combination lamp	2	
20	51204101214	GB/T5783	螺栓M10X30	Bolt M10×30	4	
21	51421100115	GB/T97.1	垫圈10	Washer 10	4	
22	51401100107	GB/T93	垫圈10	Washer 10	4	
23	30015062010	LG0016B.15.23	电控总成	Electrical control assembly	1	16B
	30015062015	LG0016BZ.15.02	电控总成	Electrical control assembly	1	16BZ
	30015062013	LG0016BQ.15.02	电控总成	Electrical control assembly	1	16BQ
	30015062008	LG0016BJ.15.12	电控总成	Electrical control assembly	1	16BJ
24	51139190205	GB/T70.1	螺钉M6X12	Screw M6×12	4	
25	51401080107	GB/T93	垫圈6	Washer 6	8	





# 电气系统 / Electric system

LG16BC



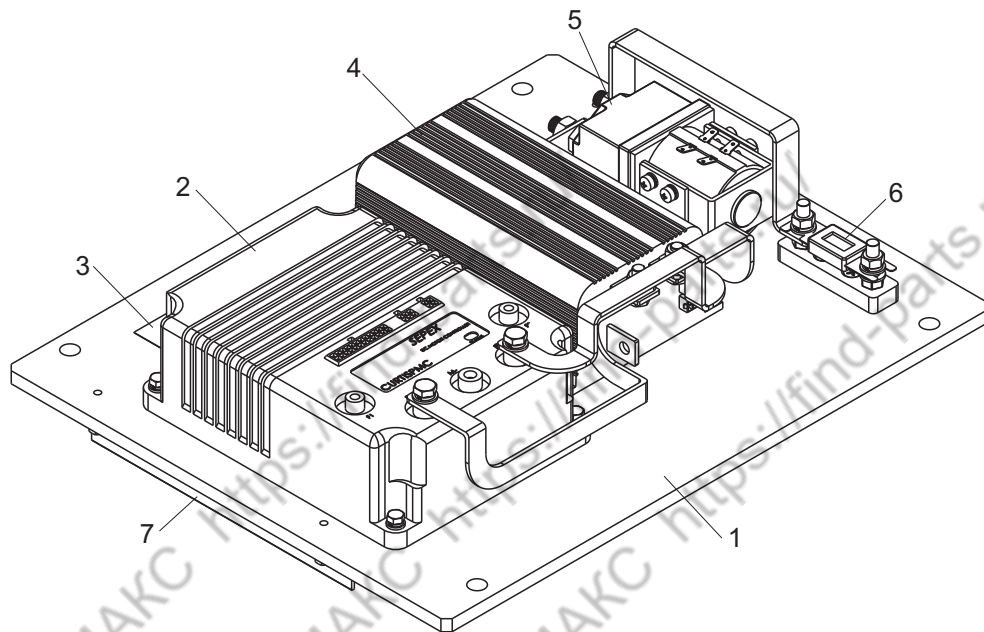
## 电气系统/ Electric system

序号 Item No	编 码 Code	图 号 Part No	零部件名称 Description	数量 Q'ty	备 注 Remark
1	30015880001	LG0016B.15.01	电气系统原理图 Electrical schematic diagram	1	
2	30015061017	LG0016B.15.24	车体线束 Vehicle body harness	1	
3	30015064501	LG0016B.15.31	护顶架线束 Overhead guard harness	1	
4	30015069302	LG0016B.15.03	转向灯 Steering lamp	2	
5	30015064200	30D-1501000	工作灯 Working lamp	2	
6	30015163418	LG0016B.15.25	仪表总成 Combination Instrument	1	
7	60405020199	LG0016B.15.06	组合开关 Combination switch	1	
8	51158170404	GB/T818	螺钉M5X12 Screw M5×12	6	
9	51421070115	GB/T97.1	垫圈5 Washer 5	8	
10	51401070107	GB/T93	垫圈5 Washer 5	8	
11	30015065003	LG0016B.15.22	加速踏板总成 Accelerator pedal assembly	1	
12	60405020218	LG0016B.15.08	刹车灯开关 Brake lamp switch	2	
13	51204091214	GB/T5783	螺栓M8X30 Bolt M8×30	4	
14	51421090115	GB/T97.1	垫圈8 Washer 8	9	
15	51401090107	GB/T93	垫圈8 Washer 8	5	
16	51307000919	GB/T6170	螺母M8 Nut M8	4	
17	30015164501	LG0030B.15.14	座椅开关 Seat switch	1	
18	30015062701	LG0016B.15.10	电源连接器总成 Power connector assembly	1	
19	30015064404	LG0016B.15.11	后组合灯 Rear combination lamp	2	
20	51204091114	GB/T5783	螺栓M10X25 Bolt M10×25	4	
21	51421100115	GB/T97.1	垫圈10 Washer 10	5	
22	51401100107	GB/T93	垫圈10 Washer 10	5	
23	30015062010	LG0016B.15.23	电控总成 Electrical control assembly	1	
24	30015153100	LG0016BC.15-001	压板 Pressure plate	1	
25	30015107607	LG0016BC.15-002	固定板 Fixed plate	1	
26	51158170604	GB/T818	螺钉M5X16 Screw M5×16	2	
27	51307000719	GB/T6170	螺母M5 Nut M5	2	
28	51139220105	GB/T70.1	螺钉M10X16 Screw M10×16	1	
29	30015166300	LG0016BC.15.32	连接线束 Connecting harness	1	
30	60980004903	LG0016BC.15.33	遥控器总成 Remote controller assembly	1	
31	51139190205	GB/T70.1	螺钉M6X12 Screw M6×12	4	
32	51401080107	GB/T93	垫圈6 Washer 6	8	
33	51421080115	GB/T97.1	垫圈6 Washer 6	8	
34	60480100011	LG0016B.15.28	DC/DC转换器 DC/DC converter	1	
35	60402020101	LG0030D.15-007	倒车蜂鸣器 Backup buzzer	1	
36	51158190304	GB/T818	螺钉M6X12 Screw M6×12	4	



## 电控总成/Electrical control assembly

LG16B,16BC,18B



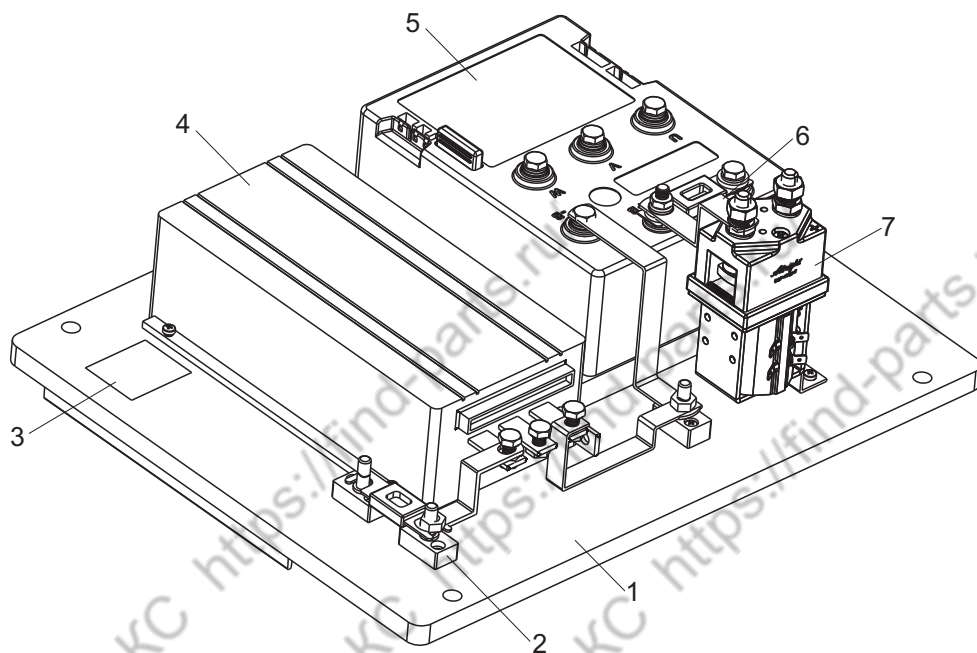
序号 Item No	编 码 Code	图 号 Part No	零 部 件 名 称 Description	数 量 Q'ty	备 注 Remark
1	60980004712	LG0016B.15.23.01	散热器底板 Bottom plate of cooler	1	
2	60403010076	1244-5561	牵引控制器 Traction controller	1	
3	60910010383	LG0016B.15.23.02	标贴 Label	1	
4	60403010073	1253-4804	油泵控制器 Oil pump controller	1	
5	60980004698	SW-200	接触器 Contactor	1	
6	60405040005	450A	熔断器 Fuse	1	
7	60102000202	LG0016B.15.23.03	齿形散热器 Form cooler	2	





## 电控总成/Electrical control assembly

LG16BJ

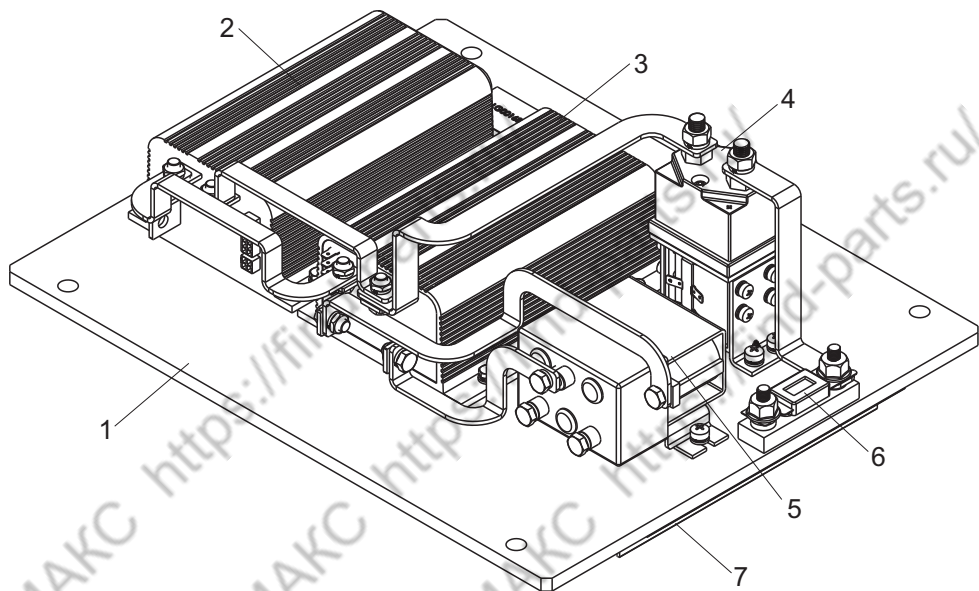


序号 Item No	编 码 Code	图 号 Part No	零 部 件 名 称 Description	数 量 Q'ty	备 注 Remark
1	60980004711	LG0016BJ.15.12.01	散热器底板 Bottom plate of cooler	1	
2	60405040003	350A	熔断器 Fuse	1	
3	60910010384	LG0016BJ.15.12.02	标贴 Label	1	
4	60403010074	HP 48/350B	泵控制器 Oil pump controller	1	
5	60403010078	AC2 48/450-FLASH-ing	牵引控制器 Traction controller	1	
6	60980004716	300A	熔断器 Fuse	1	
7	60980004698	SW-200	主接触器 Main contactor	1	



## 电控总成 / Electrical control assembly

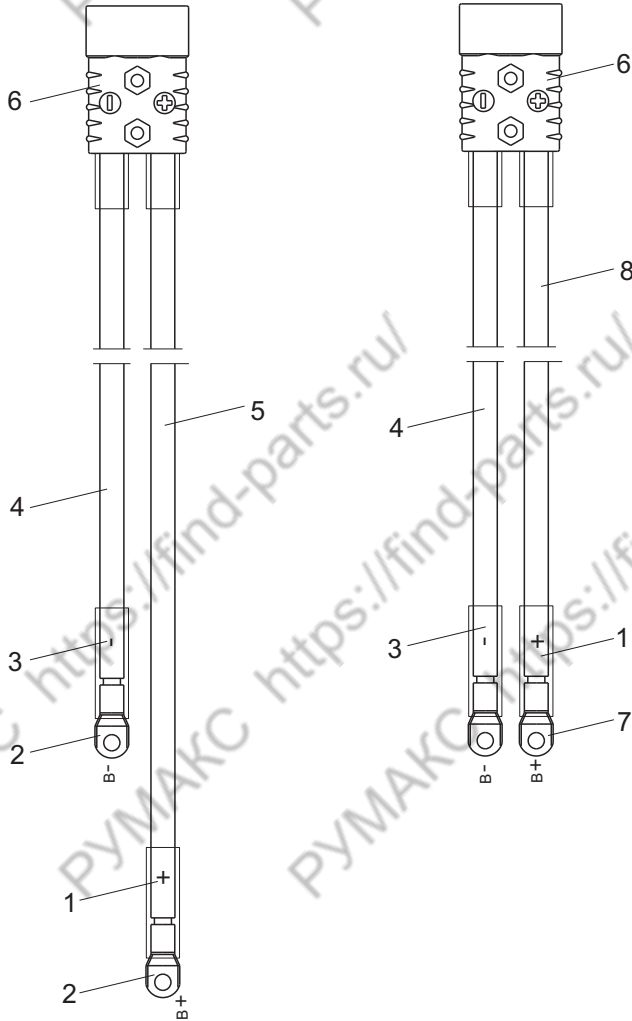
LG16BZ



序号 Item No	编 码 Code	图 号 Part No	零部件名称 Description	数量 Q'ty	备 注 Remark
1	60918010399	LG0016BZ.15.02-001	底板 Bottom plate of cooler	1	
2	60403010073	1253-4803	泵控制器 Oil pump controller	1	
3	60403010086	1205M-5603	牵引控制器 Traction controller	1	
4	60980004936	DC182-7	F/R接触器 Contactor	1	
5	60980004867	SW200	主接触器 Main controller	1	
6	60405040005	450A	熔断器 Fuse	1	
7	60102000200	LG0016BZ.15.02.01	散热器 Form cooler	1	

## 电源插接器总成/Power plug assembly

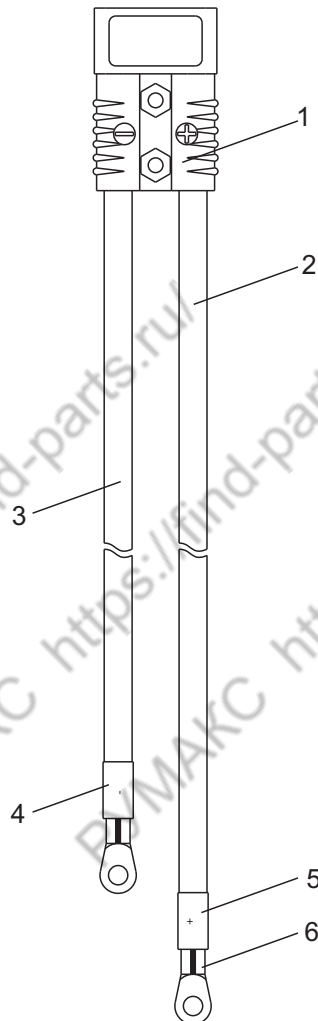
LG16B,16BC,16BJ,18B



序号 Item No	编 码 Code	图 号 Part No	零 部 件 名 称 Description	数 量 Q'ty	备 注 Remark
1	60911011898	LG0016BE.15.05.01	热缩管 Thermal shrinkage pipe	2	
2	60480010003	SC35-10	接线鼻 Wire connecting terminal	2	
3	60911011899	LG0016BE.15.05.02	热缩管 Thermal shrinkage pipe	2	
4	60404010692	QVR-105 1X35 B	负极线 Negative cable(-)	2	
5	60404010696	QVR-105 1X35 B	正极线 Positive cable(+)	1	
6	60480040049	SB175	电源插接器 Power connector plug	2	
7	60404010643	OT35-8	接线鼻 Wire connecting hole	2	
8	60404010641	QVR-105 1X35 B	正极线 Negative cable(+)	1	

## 电源插接器总成/Power plug assembly

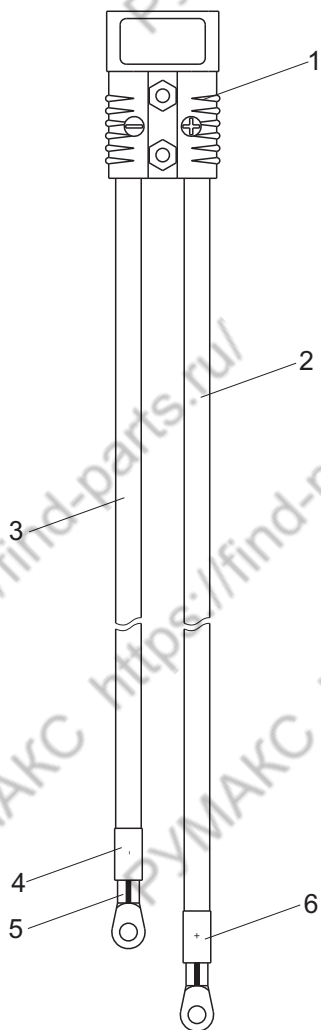
LG16BZ,16BQ



序号 Item No	编 码 Code	图 号 Part No	零 部 件 名 称 Description	数 量 Q'ty	备 注 Remark
1	60480040049	SB175	车身端电源插接器 Power connector of frame	1	
2	60404010695	QVR-105 1X35 B	正极线 Positive cable(+)	1	
3	60404010691	QVR-105 1X35 B	负极线 Cable(-)	1	
4	60911011899	LG0016BE.15.05.02	热缩管 Plastic pipe	1	
5	60911011898	LG0016BE.15.05.01	热缩管 Plastic pipe	1	
6	60404010643	OT35-8	接线鼻 Wire connecting terminal	2	

## 电源插接器总成/Power plug assembly

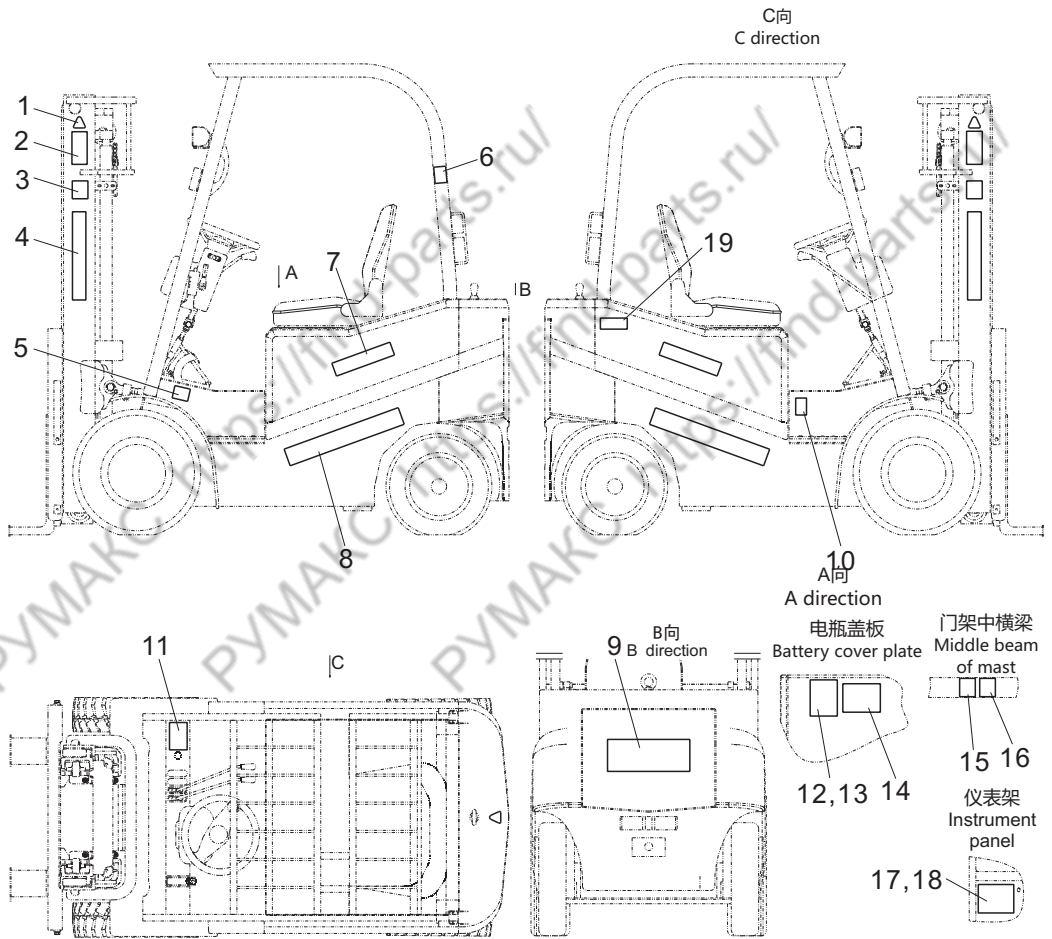
LG16BZ,16BQ



序号 Item No	编 码 Code	图 号 Part No	零 部 件 名 称 Description	数 量 Q'ty	备 注 Remark
1	60480040049	SB175	蓄电池端电源插接器 Power connector of battery	1	
2	60404010696	QVR-105 1X35 B	正极线 Cable(+)	1	
3	60404010692	QVR-105 1X35 B	负极线 Cable(-)	1	
4	60911011901	LG0016BE.15.06.03	热缩管 Thermal shrinkage pipe	1	
5	60404010643	OT35-8	接线鼻 Wire connecting terminal	2	
6	60911011912	LG0016BE.15.06.02	热缩管 Thermal shrinkage pipe	1	

# 标牌/Label

通用

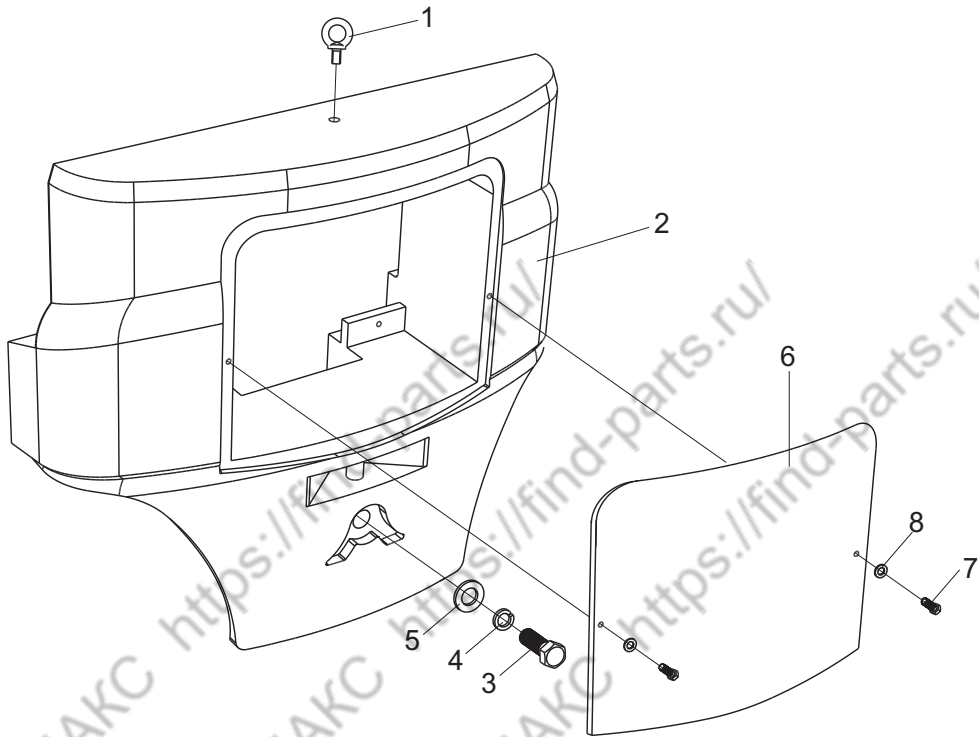


标牌/Label

序号 Item No	编 码 Code	图 号 Part No	零 部 件 名 称 Description	数 量 Q'ty	备 注 Remark
1	30016197802	LG0030D.16-002	起吊点标牌 Hoist point label	3	
2	30016197300	20B-1600001	警示标牌货叉上下禁止停留 No stay label	1	
3	30016198700	20B-1600019	CE标志 CE label	2	
4	30016197506	LG0030D.16-003	龙工标志 Lonking label	2	
5	30016197601	LG0016B.16-002	轮胎气压标牌 Tire pressure label	1	
6	30016197800	20B-1600014	起吊点标牌 Hoist point label	1	
7	30016198202	LG0016B.16-003	型号标牌 Model label	2	1.6T
	30016198246	LG0018B.17-001	型号标牌 Model label	2	1.8T
8	30016197507	LG0030D.16-008	龙工标志 Lonking label	2	
9	30016197502	20B-1600015	龙工标志 Lonking label	1	
10	30016198502	20B-1600016	油品标牌 Oil label	1	
11	30016198603	LG0016B.16-007	载荷曲线图标牌 Load curve chart label	1	1.6T
	30016198622	LG0018BE.16-001	载荷曲线图标牌 Load curve chart label	1	1.8T
12	30016198000	20B-1600012	说明标牌(中文) Notice label(Chinese)	1	
13	30016198002	20B-1600018	说明标牌(英文) Notice label(English)	1	出口
14	30016197900	20B-1600003	润滑点标牌 Lubrication label	1	
15	30016197302	20B-1600007	警示标牌勿伤手 Do not hurt the hand	1	
16	30016197301	20B-1600002	警示标牌门架后侧禁入 Forbit going behind mast signs	1	
17	30016197700	20B-1600017	铭牌 Nameplate	1	
18	51569000106	GB/T12618.1	抽芯铆钉4X13 Mandrel blind rivet	4	
19	30016197200	LG0030B.16-011	交流标志 AC sign	1	16BJ,16BQ用

## 平衡重总成/Counter weight assembly

通用



序号 Item No	编 码 Code	图 号 Part No	零部件名称 Description	数量 Q'ty	备 注 Remark
1	51142260208	GB/T825A	螺钉M20 Screw M20	1	
2	30017151507	LG0016B.17-001	平衡重 Counter weight	1	1.6T
	30017151532	LG0018B.17-001	平衡重 Counter weight	1	1.8T
3	51203172814	GB/T5782	螺栓M24X120 Bolt M24×120	1	1.6T
	51203173214	GB/T5782	螺栓M24X160 Bolt M24×160	1	1.8T
4	51401170107	GB/T93	垫圈24 Washer 24	1	
5	51420170121	GB/T96.1	垫圈24 Washer 24	1	
6	30017107303	LG0016B.17-003	盖板 Cover plate	1	
7	51204081014	GB/T5783	螺栓M6X20 Bolt M6×20	2	
8	51420080121	GB/T96.1	垫圈6 Washer 6	2	