

说明

感谢您使用我公司生产的产品。

本零件图册适用于我公司生产的LG45D、LG45DT、小5吨内燃平衡重式叉车，以使用户在修理更换叉车零部件时，从中查找出所需的零件名称、结构及安装位置，并作为订货参考。

在订货时，必须说明原叉车的型号及出厂日期，并根据本图册，说明零件的详细名称、标号、数量及完整的代号。

我公司叉车根据用户和生产发展，将不断地进行改进，故图册内容可能在一定的时期将有更动，待再版时予以修改，敬请用户注意。

本图册不可避免的存在缺点，我们热诚欢迎用户提出宝贵意见。

本图册为第3版,第2次修改。

2014年9月

Introduction

Thank you for selecting our products.

This parts catalogue is applied for the LG45D、LG45DT Internal Combustion Counterbalanced Forklift Truck by our plant. It is intended for users to identify the description, the structure and the assembling location of the parts replaced or repaired, and to put order on them.

When ordering parts, it is necessary to state the model of the forklift, and manufacturing date, and the description, specification, quantity and code based on this parts book.

Owing to the rapid development of the technology and our continual improvement of product, the information contained in this book may be changed without notice.

For improving our work, customers are sincerely requested to give us comments and suggestions.

Edition 3 , Modified 2 .

Sep., 2014

查询方法:

- 1.在目录中找到相应的系统或总成;
- 2.翻至所标页数,找到该图;
- 3.在其图中找出所需零部件,以及它所标注的序号;
- 4.根据这个序号,在其后附表中可以查到系统或零件的详细信息.

订购零部件时,务请写清叉车的型号,出厂编号,所需零部件的图号及订购数量.

维修时,请使用原厂家提供的零部件,以确保叉车质量.

Indexing Way:

- 1.Find out the indexing for the system or assembly;
- 2.According to above page, find out the detail drawing for the system or assembly required;
- 3.From the detail drawing, find out the parts and their item numbers;
- 4.According to these item numbers, find out details of these parts of the system or assembly from attached table.

When ordering the parts or components, please indicate the model and series numbers of parts or components you require and their quantity.

When you replace parts or components, please apply the real goods made by our company to ensure the truck's quality.

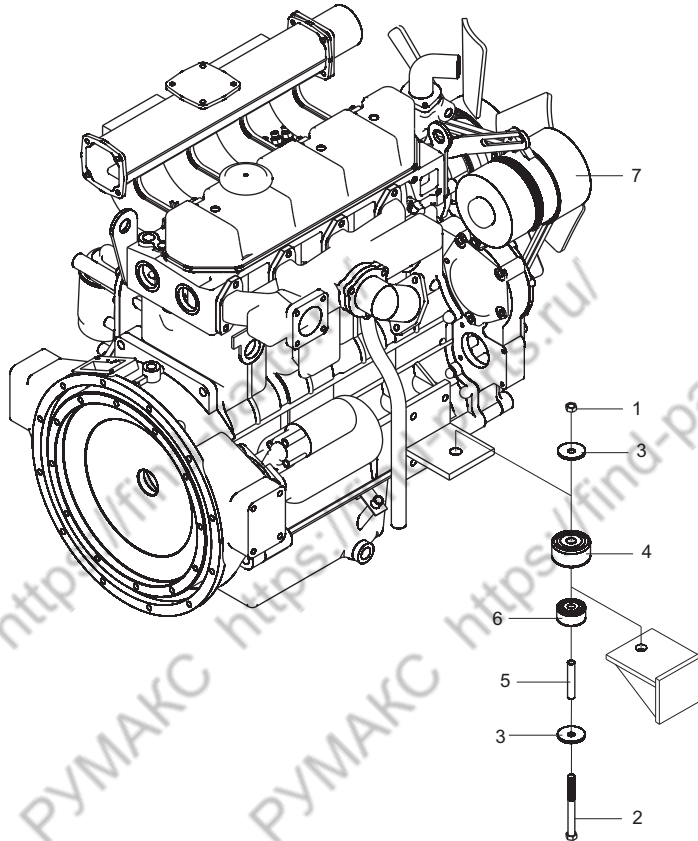
目录/Contents

发动机总成/Engine assembly	1
LG45D(T),选配50DTQ	
空滤器总成/Air cleaner assembly	2
LG45D(T),选配50DTQ	
散热器总成/Radiator assembly	3
LG45D	
散热器总成/Radiator assembly	4
LG45DT,选配50DTQ	
燃油装置总成/Fuel system assembly	6
LG45D(T),选配50DTQ	
消声器总成/Muffler assembly	7
LG45D(T),选配50DTQ	
传动系统/Drive system	8
LG45DT,选配LG50DTQ	
传动系统/Drive system	9
LG45D	
驱动桥总成/Drive axle assembly	10
LG45D	
变速箱总成/ Transmission assembly	11
LG45D	
变速操纵总成/Speed control assembly	12
LG45DT,选配LG50DTQ	
转向操纵总成/Steering control assembly	13
LG45D(T),选配LG50DTQ	
转向桥总成/Steering axle assembly	14
LG45D(T),选配LG50DTQ	
油门操纵总成/Throttle pedal assembly	15
LG45D(T),选配LG50DTQ	
油门支架总成/Throttle bracket assembly	16
LG45D(T),选配LG50DTQ	
熄火操纵/Flameout control	17
LG45D(T),选配LG50DTQ	
行车制动系统/Service brake system.....	18
LG45D	
行车制动与离合操纵/Brake & clutch system	20
LG45DT,选配LG50DTQ	
行车制动总成/Service brake assembly.....	22
LG45D	
停车制动操纵/Parking brake control	24
LG45D(T),选配LG50DTQ	
车架/Frame	25
LG45D	
车架/Frame	26
LG45DT,选配LG50DTQ	
覆盖件系统/Mantle system	27
LG45D	
覆盖件系统/Mantle system	29
LG45DT,选配LG50DTQ	
门架(基本型)/Mast (normal mast)	32
LG45D	
门架(基本型)参数/Mast(normal mast)	35
LG45DT,选配LG50DTQ	
门架(二级全自由)/Mast(full free 2-stage mast)	38
LG45D	
门架(二级全自由)/Mast(full free 2-stage mast)	40
LG45DT,选配LG50DTQ	
门架(三级全自由)/Mast(full free 3-stage mast)	42
LG45D	

门架(三级全自由)/Mast(full free 3-stage mast)	44
LG45DT,选配LG50DTQ	
货叉及货叉架(基本型/二级/三级全自由)/ Fork &Fork carrier(normal/full 2-stage/3-stage mast) ..	46
LG45D(T),选配LG50DTQ	
起升油缸(基本型)/Lift cylinder (normal mast)	48
LG45D(T),选配LG50DTQ	
倾斜油缸(基本型/二级/三级全自由)/Tilt cylinder(normal/full 2-stage/3-stage mast)	51
LG45D(T),选配LG50DTQ	
前起升油缸(二级/三级全自由)/Front lift cylinder (full free 2-stage/3-stage mast)	53
LG45D(T),选配LG50DTQ	
后起升油缸(二级全自由)/Rear lift cylinder (full free 2-stage mast)	56
LG45D(T),选配LG50DTQ	
后起升油缸(三级全自由)/Rear lift cylinder (full free 3-stage mast)	59
LG45D(T),选配LG50DTQ	
门架侧移管路系统(基本型)/Side shifting pipe system(normal)	62
LG45D(T),选配LG50DTQ	
门架侧移管路系统(二级全自由)/Side shifting pipe system mast(full free2-stage mast)	64
LG45D(T),选配LG50DTQ	
门架侧移管路系统(三级全自由)/Side shifting pipe system mast(full free3-stage mast)	67
LG45D(T),选配LG50DTQ	
门架起升管路系统(二级全自由)/Lift pipe system mast(full free 2-stage mast)	69
LG45D(T),选配LG50DTQ	
门架起升管路系统(三级全自由)/Lift pipe system mast(full free 3-stage mast)	70
LG45D(T),选配LG50DTQ	
多路阀操纵(两联)/Multi-way valve control(two- throw)	72
LG45D(T),选配LG50DTQ	
多路阀操纵(三联)/Multi-way valve control(three- throw)	74
LG45D(T),选配LG50DTQ	
多路阀操纵(四联)/Multi-way valve control(Four- throw)	76
LG45D(T),选配LG50DTQ	
液压系统/Hydraulic system	78
LG45D	
液压系统/Hydraulic system	81
LG45DT,选配LG50DTQ	
液压油箱盖板总成/Hydraulic oil tank cover plate	84
LG45D	
液压油箱盖板总成/Hydraulic oil tank cover plate	85
LG45D(T),选配LG50DTQ	
护顶架/Overhead guard	86
LG45D(T),选配LG50DTQ	
电气系统/Electric system	88
LG45D	
电气系统/Electric system	90
LG45DT,选配LG50DTQ	
蓄电池安装/Battery assembly	92
LG45D(T),选配LG50DTQ	
标牌/Decal	93
LG45D(T),选配LG50DTQ	
平衡重总成/Counter balance assembly	95
LG45D(T),选配LG50DTQ	

发动机总成/Engine assembly

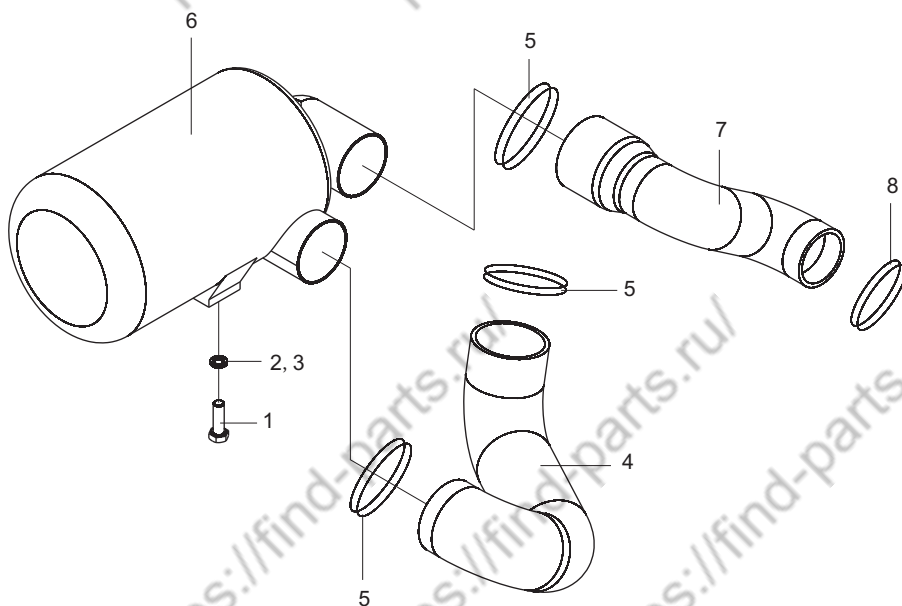
LG45D(T)、LG50DTQ



序号 Item No	编 码 Code	图 号 Part No	零部件名称 Description	数量 Q'ty	备 注 Remark
1	51341000819	GB/T889.1	螺母M14 Nut M14	2	
2	51203122614	GB/T5782	螺栓M14×100 Bolt M14×100	2	
3	51420120121	GB/T96.1	垫圈14 Plain washer 14	4	
4	30001109008	LG0045DT.01.04-001	减震垫 Rubber gasket	2	
5	30001107416	LG0045DT.01.04-002	钢管 Steel pipe	2	
6	30001109002	LG0045DT.01.04-003	减震垫 Rubber gasket	2	
7	30001012039	4JR3ABG18-LG-U2	发动机总成/4JR3ABG18/57KW/77.5PS Engine assembly	1	45DT
	30001012050	LG0045D.02.05	发动机总成/4D35G-005/48KW/65.3PS Engine assembly	1	45D
	30001012039	LG0050DTQ.02.01	发动机总成/LR4B3-221/57KW/77.5PS Engine assembly	1	50DTQ

空滤器总成 / Air filter assembly

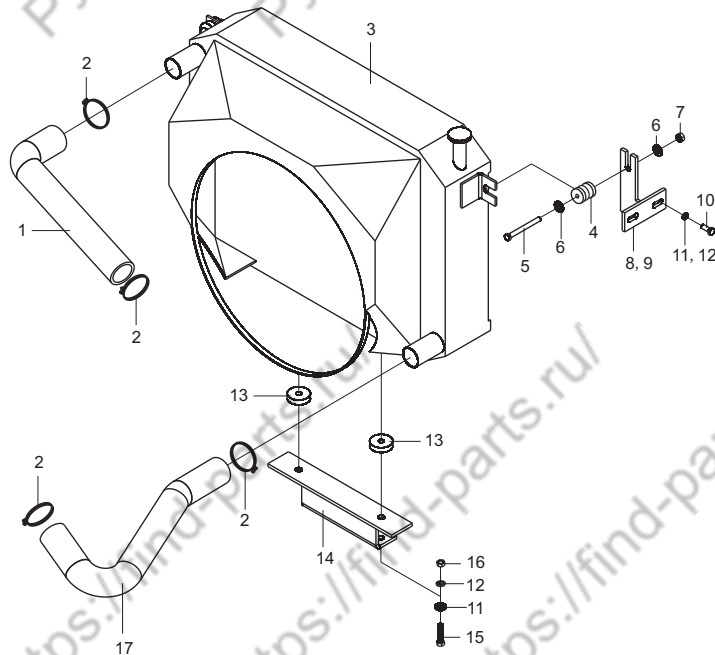
LG45D(T)、LG50DTQ



序号 Item No	编 码 Code	图 号 Part No	零 部 件 名 称 Description	数 量 Q'ty	备 注 Remark	
1	51204091114	GB/T5783	螺栓M8×25	Bolt M8×25	2	
2	51401090107	GB/T93	垫圈8	Washer 8	2	
3	51421090115	GB/T97.1	垫圈8	Washer 8	2	
4	30001106021	LG0045DT.01.01-001	成型管	MoldingPipe	1	
5	56171002801	JB/T8870	喉箍d100 (80~100)	Hoop d100(80~100)	3	
6	30001014826	LG0045DT.01.01.02	空滤器总成	Air cleaner assembly	1	
7	30001106022	LG0045DT.01.01-002	成型管	Molding pipe	1	45DT/50DTQ
	30001106019	LG0045D.01.01-001	成型管	Molding pipe	1	45D
8	56171002201	JB/T8870	喉箍d80 (60~80)	Hoop d80(60~80)	1	

散热器总成/Radiator assembly

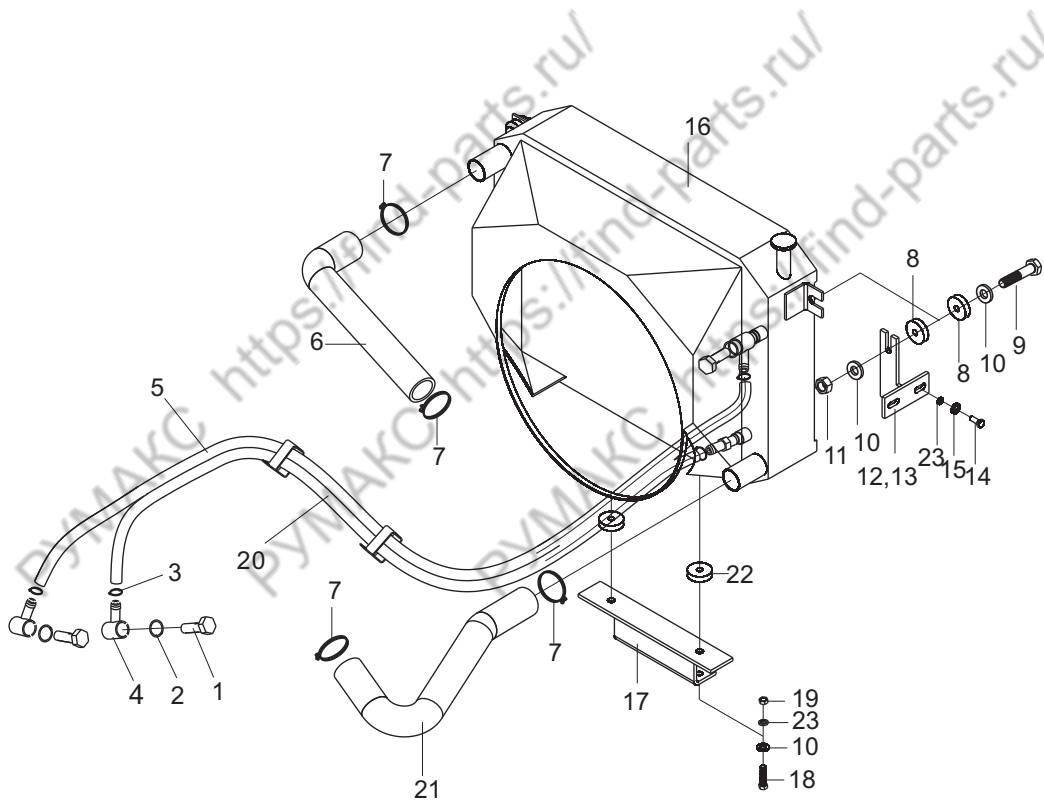
LG45D



序号 Item No	编 码 Code	图 号 Part No	零部件名称 Description	数量 Q'ty	备 注 Remark
1	30001106020	LG0045D.01.02-001	成型管 Molding pipe	1	
2	56171000601	JB/T8870	喉箍d50 (32~50) Hoop d50(32~50)	4	
3	30001016327	LG0045D.01.02.04	散热器总成 Radiator assembly	1	
4	30001109000	30D-0121003	减震垫 Rubber gasket	2	
5	60911011061	30D-0141004	六角螺栓 Hexagon bolt	2	
6	51420100121	GB/T96.1	垫圈10 Washer 10	4	
7	51341000519	GB/T889.1	螺母M8 Nut M8	2	
8	30001018105	LG0045D.01.02.02	支架焊合 Bracket weldment	1	
9	30001018106	LG0045D.01.02.03	支架焊合 Bracket weldment	1	
10	51204101014	GB/T5783	螺栓M10×20 Bolt M10×20	4	
11	51401100107	GB/T93	垫圈10 Washer 10	6	
12	51421100115	GB/T97.1	垫圈10 Washer 10	6	
13	30001109001	30D-0121004	减震垫 Rubber gasket	2	
14	30001018104	LG0045D.01.02.01	支架焊合 Bracket weldment	1	
15	51204101114	GB/T5783	螺栓M10×35 Bolt M10×35	2	
16	51307001019	GB/T6170	螺母M10 Nut M10	2	
17	30001106057	LG0045D.01.02-002	成型管 Molding pipe	1	

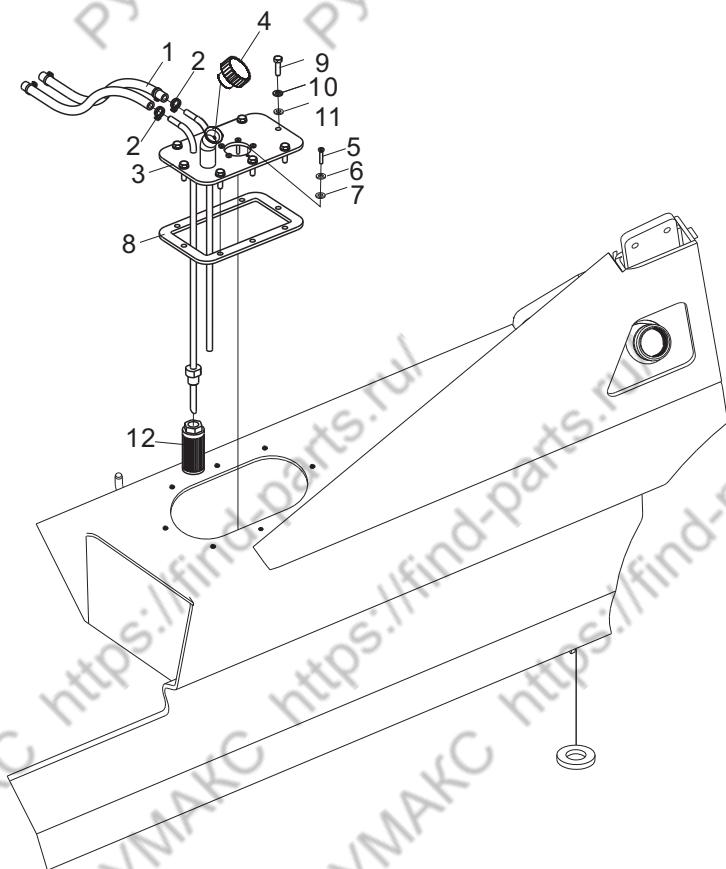
散热器总成/Radiator assembly

LG45DT、LG50DTQ



燃油装置总成/Fuel system assembly

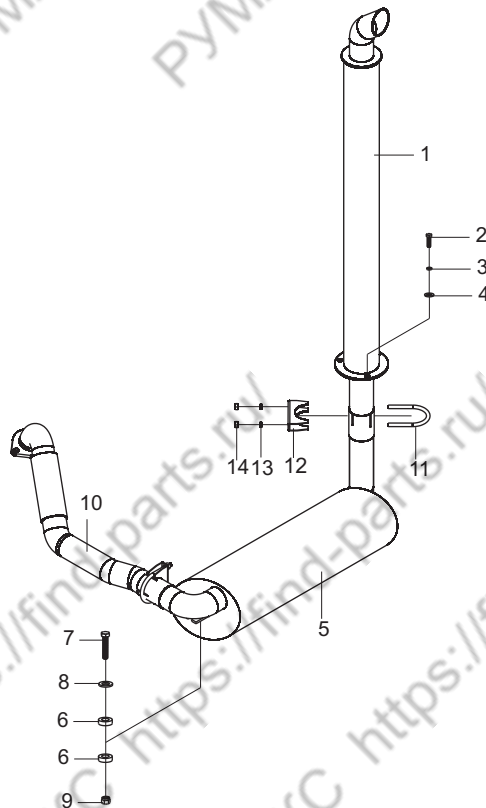
LG45D(T)、LG50DTQ



序号 Item No	编 码 Code	图 号 Part No	零 部 件 名 称 Description	数量 Q'ty	备 注 Remark
1	30001109210	LG0045DT.01.05-001	胶管 Hose	2	
2	56171000101	JB/T8870	喉箍d16(10~16) Hoop d20(12~20)	4	
3	30001015912	LG0045DT.01.05.01	燃油箱盖板焊合 Fuel tank cover plate	1	
4	60980000847	30D-0131400	加油口盖 Oil filler weldment	1	
5	51158170404	GB/T818	螺钉M5×12 Screw M5×12	5	
6	51401070107	GB/T93	垫圈5 Washer 5	5	
7	51421070115	GB/T97.1	垫圈5 Washer 5	5	
8	30001111505	LG0045DT.01.05-002	密封垫 Seal gasket	1	
9	51204091014	GB/T5783	螺栓M8×20 Bolt M8×20	8	
10	51401090107	GB/T93	垫圈8 Washer 8	8	
11	51421090115	GB/T97.1	垫圈8 Washer 8	8	
12	30001015100	LG0030D.01.03.03	滤芯总成 Filter element assembly	1	

消声器总成/Muffler assembly

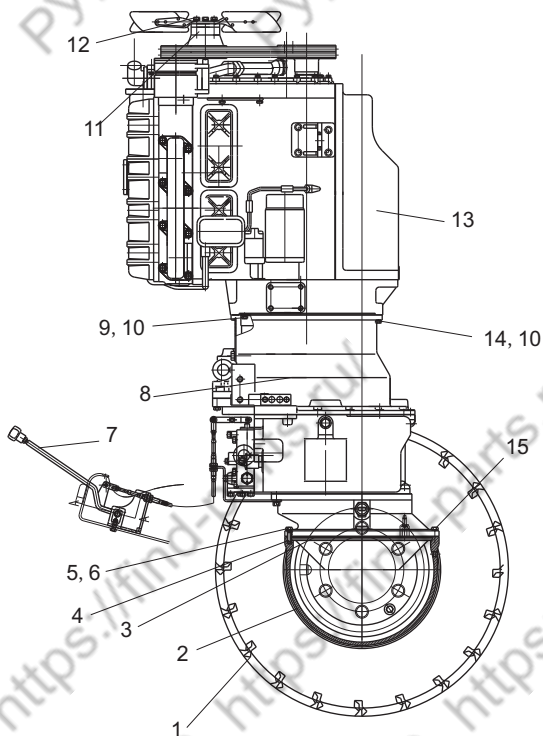
LG45D(T)、LG50DTQ



序号 Item No	编 码 Code	图 号 Part No	零部件名称 Description	数量 Q'ty	备 注 Remark
1	30001113600	LG0045DT.01.03.04	尾管 Tail pipe	1	
2	51204091014	GB/T5783	螺栓M8×20 Bolt M8×20	6	
3	51401090107	GB/T93	垫圈8 Washer 8	6	
4	51421090115	GB/T97.1	垫圈8 Washer 8	6	
5	30001016847	LG0045DT.01.03.03	消声器总成 Muffler assembly	1	
6	30001113900	30D-0141001	橡胶垫 Rubber shim	4	
7	60911011061	30D-0141004	六角螺栓 Hexagon bolt	2	
8	51420100121	GB/T96.1	垫圈10 Washer 10	4	
9	51347000319	GB/T6184	螺母M8 Nut M8	2	
10	30001015412	LG0045D.01.03.01	排气管总成 Exhaust pipe assembly	1	45D
	30001015419	LG0045DT.01.03.02	排气管总成 Exhaust pipe assembly	1	45DT/50DTQ
11	30001105000	LG0045DT.01.03.01-002	U型螺栓 U-bolt	1	
12	30001105100	LG0045DT.01.03.01-001	U型卡环套 U clamp sheath	1	
13	51401090107	GB/T93	垫圈8 Washer 8	2	
14	51307000919	GB/T6170	螺母M8 Nut M8	2	

传动系统/Drive system

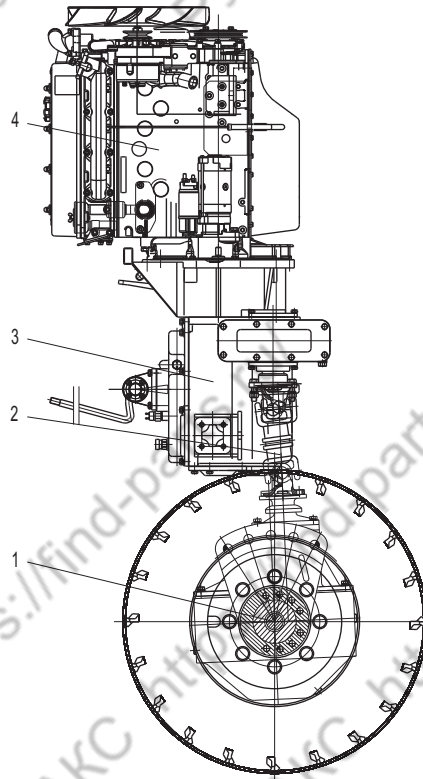
LG45DT、LG50DTQ



序号 Item No	编 码 Code	图 号 Part No	零 部 件 名 称 Description	数 量 Q'ty	备 注 Remark
1	30002024305	LG0045DT.02.01	驱动轮总成 Drive wheel assembly	2	
2	30002024516	LG0045DT.02.02	驱动桥总成 Drive axle assembly	1	
3	30002111500	LG0045DT.02-001	密封垫 Seal gasket	1	
4	51517121702	GB/T119	圆柱销10×30 Cylindrical pin 10×30	1	
5	51207115318	GB/T5786	螺栓M12×1.25×35 Bolt M12×1.25×35	10	
6	51401110107	GB/T93	垫圈12 Spring lock washer 12	12	
7	30002020102	LG0045DT.02.03	变速操纵总成 Speed control assembly	1	
8	30002020306	LG0045DT.02.04	变速箱总成 Transmission assembly	1	
9	51204101114	GB/T5783	螺栓M10×25 Bolt M10×25	12	
10	51401100107	GB/T93	垫圈10 Spring lock washer 10	28	
11	30002106303	LG0045DT.02-002	垫块 Padding block	1	
12	51203101814	GB/T5782	螺栓M10×60 Bolt M10×60	4	
13	30001012039	LG0045DT.02.06	发动机总成 Engine assembly	1	45DT
	30001012039	LG0050DTQ.02.01	发动机总成 Engine assembly	1	50DTQ
14	51204101514	GB/T5783	螺栓M10×45 Bolt M10×45	12	
15	51207115214	GB/T5786	螺栓M12×1.25×30 Bolt M12×1.25×30	2	

传动系统/Drive system

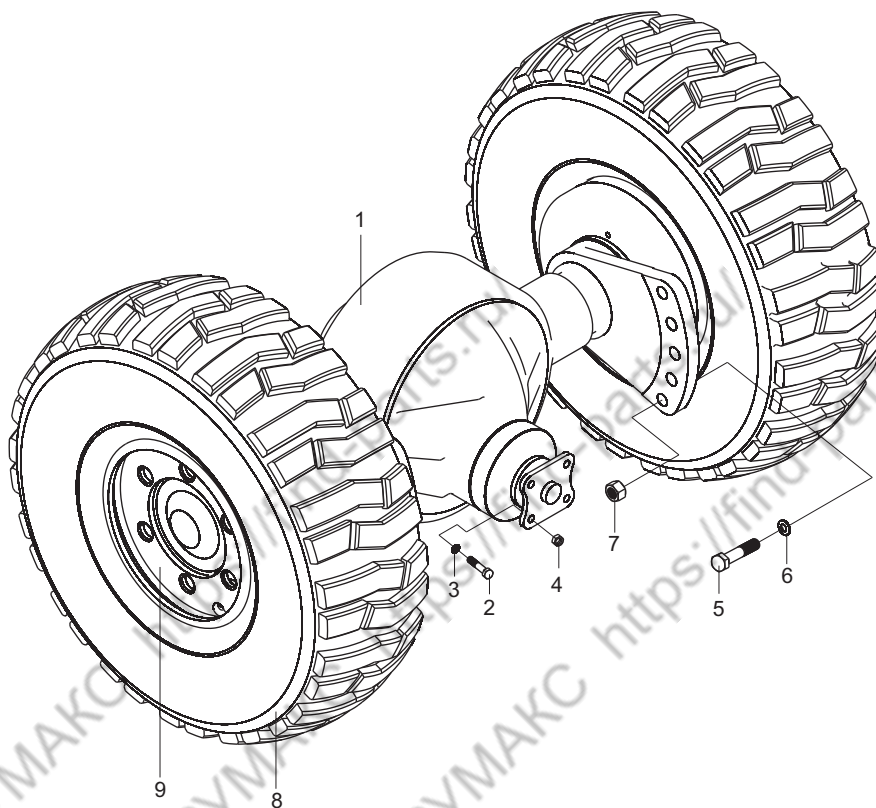
LG45D



序号 Item No	编 码 Code	图 号 Part No	零部件名称 Description	数量 Q'ty	备 注 Remark
1	30002024514	LG0045D.02.01	驱动桥总成 Drive axle assembly	1	
2	30002021000	LG0045D.02.02	传动轴总成 Drive shaft assembly	1	
3	30002020314	LG0045D.02.03	变速箱总成 Transmission assembly	1	
4	30001012050	LG0045D.02.05	发动机总成 Engine assembly	1	

驱动桥总成/Drive axle assembly

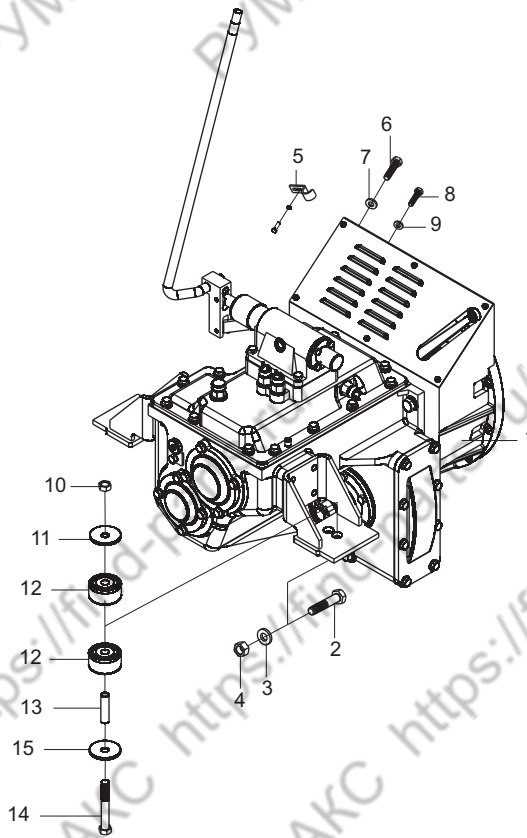
LG45D



序号 Item No	编 码 Code	图 号 Part No	零 部 件 名 称 Description	数 量 Q'ty	备 注 Remark
1	30002024522	LG0045D.02.01.01	驱动桥总成 Drive axle assembly	1	
2	51210120215	GB/T5785	螺栓M14×1.5×50 Bolt M14×1.5×50	4	
3	51401120107	GB/T93	垫圈14 Plain washer 14	4	
4	51349000621	GB/T6185.2	螺母M14×1.5 Nut M14	4	
5	51207172218	GB/T5786	螺栓M24×2×80 Bolt M24×2×80	10	
6	51401170107	GB/T93	垫圈24 Plain washer 24	10	
7	51309001220	GB/T6171	螺母M24×2 Nut M24×2	10	
8	30002024304	LG0045D.02.01.02	驱动轮总成 Drive wheel assembly	2	

变速箱总成/Transmission assembly

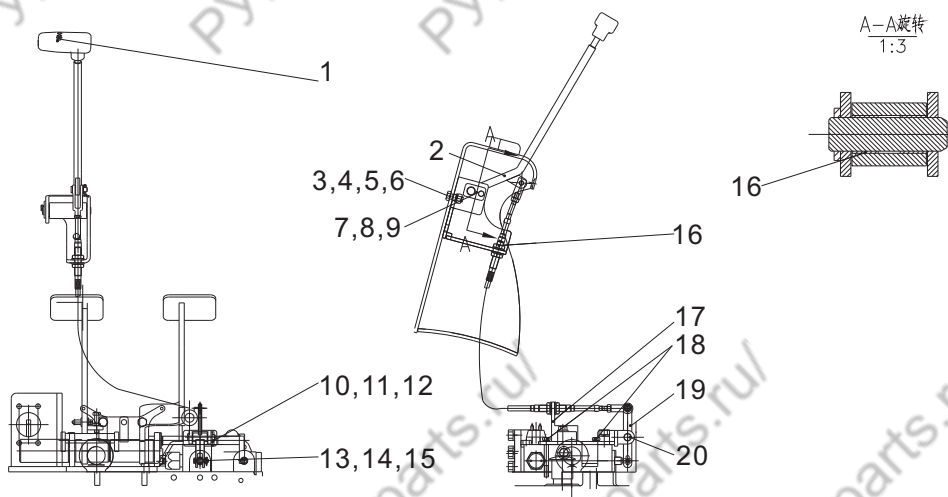
LG45D



序号 Item No	编 码 Code	图 号 Part No	零 部 件 名 称 Description	数 量 Q'ty	备 注 Remark
1	30002020338	LG0045D.02.03.01	变速箱 Transmission assembly	1	
2	51210120215	GB/T5785	螺栓M14×1.5×50 Bolt M14×1.5×50	4	
3	51401120107	GB/T93	垫圈14 Plain washer 14	4	
4	51349000621	GB/T6185.2	螺母M14×1.5 Nut M14×1.5	4	
5	30002107800	LG0030D.02-002	管夹 Clip	2	
6	51204101514	GB/T5783	螺栓M10×45 Bolt M10×45	9	
7	51401100107	GB/T93	垫圈10 Washer 10	9	
8	51204091214	GB/T5783	螺栓M8×30 Bolt M8×30	12	
9	51401090107	GB/T93	垫圈8 Washer 8	12	
10	51347000419	GB/T6184	螺母M10 Nut M10	2	
11	30002118201	LG0100DT.02.03-001	垫片 Gasket	2	
12	30002113901	LG0100DT.02.03-002	橡胶垫 Rubber gasket	4	
13	30002107406	LG0060DT.02.03-002	钢管 Steel tube	2	
14	51203102614	GB/T5782	螺栓M10×100 Bolt M10×100	2	
15	51420100121	GB/T96.1	垫圈10 Plain washer 10	2	

变速操纵总成/Speed control assembly

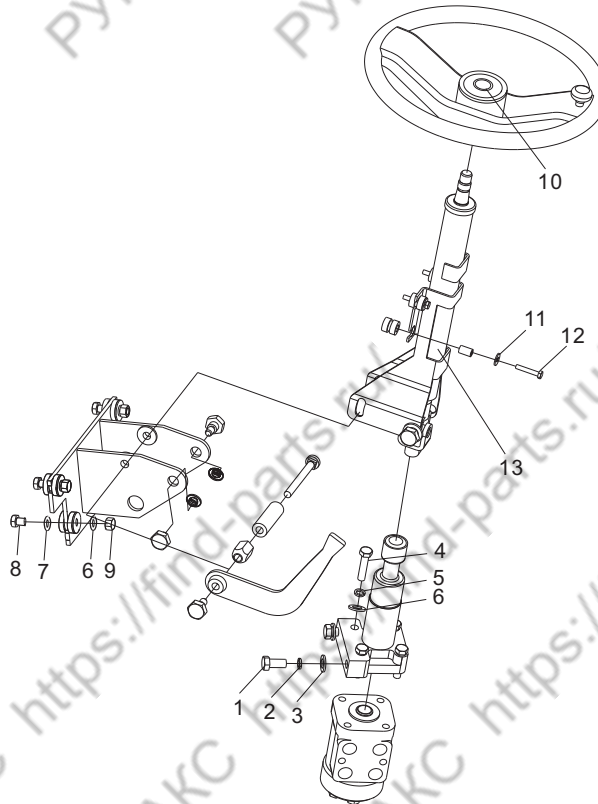
LG45DT、LG50DTQ



序号 Item No	编 码 Code	图 号 Part No	零 部 件 名 称 Description	数 量 Q'ty	备 注 Remark
1	30002132002	LG0045DT.02.03.01	手柄 Handle	1	
2	30002020600	LG0045DT.02.03.02	操纵杆焊合 Control rod weldment	1	
3	30002115001	LG0045DT.02.03-001	支架 Bracket	1	
4	51204101114	GB/T5783	螺栓M10×25 Bolt M10×25	3	
5	51401100107	GB/T93	垫圈10 Spring lock washer 10	3	
6	51307001019	GB/T6170	螺母M10 Nut M10	3	
7	30011025004	30D-1121100	销轴焊合 Pin shaft weldment	1	
8	51204080814	GB/T5783	螺栓M6×12 Bolt M6×12	1	
9	51401080107	GB/T93	垫圈6 Spring lock washer 6	1	
10	51512081201	GB/T91	销3.2×25 pin 3.2×25	1	
11	51421100115	GB/T97.1	垫圈10 Washer 10	1	
12	51511061902	GB/T882	销B10×50 Pin B10×50	1	
13	51511041102	GB/T882	销B6×26 Pin B6×26	1	
14	51421080115	GB/T97.1	垫圈6 Washer 6	2	
15	51512050801	GB/T91	销1.6×16 Pin 1.6×16	3	
16	52011000101	GB/T12613.1	滑动轴承16×18×25 Slide bearing 16×18×25	2	
17	30002024700	LG0045DT.02.03.04	软轴总成 Flexible shaft assembly	1	
18	30002018103	LG0045DT.02.03.06	支架焊合 Support weldment	1	
19	51203092214	GB/T5782	螺栓M8×80 Bolt M8×80	2	
20	30002025600	LG0045DT.02.03.05	摇臂焊合 Rocker arm weldment	1	
21	52011000802	GB/T12613.1	滑动轴承10×12×15 Slide bearing 10×12×15	1	

转向操纵总成 / Steering control assembly

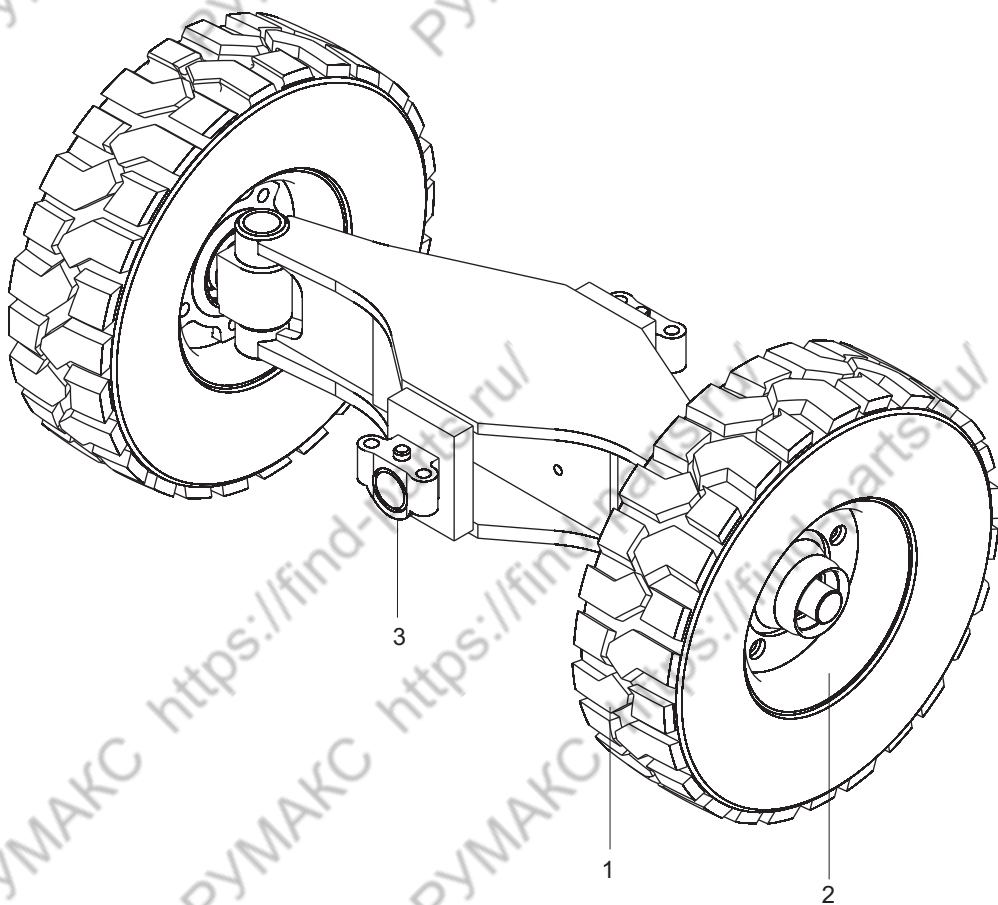
LG45D(T)、LG50DTQ



序号 Item No	编 码 Code	图 号 Part No	零部件名称 Description		数量 Q'ty	备 注 Remark
1	51207115114	GB/T5786	螺栓M12×1.25×25	Bolt M12×1.25×25	2	
2	51401110107	GB/T93	垫圈 12	Spring lock washer 12	2	
3	51421110115	GB/T97.1	垫圈 12	Plain washer 12	2	
4	51204101514	GB/T5783	螺栓M10×45	Bolt M10×45	4	
5	51401100107	GB/T93	垫圈 10	Spring lock washer 10	4	
6	51421100115	GB/T97.1	垫圈 10	Plain washer 10	8	
7	51420100121	GB/T96.1	垫圈 10	Plain washer 10	4	
8	51307001019	GB/T6170	螺母M10	Nut M10	4	
9	51204101414	GB/T5783	螺栓M10×40	Bolt M10×40	4	
10	60305000017	LG0030D.03.01.02	方向盘总成	Steering wheel assembly	1	
11	51430080114	GB/T5287	垫圈 6	Plain washer 6	4	
12	51204081214	GB/T5783	螺栓M6×30	Bolt M6×30	4	
13	30003033704	LG0045DT.03.01.01	转向管柱总成	Steering column assembly	1	

转向桥总成/Steering axle assembly

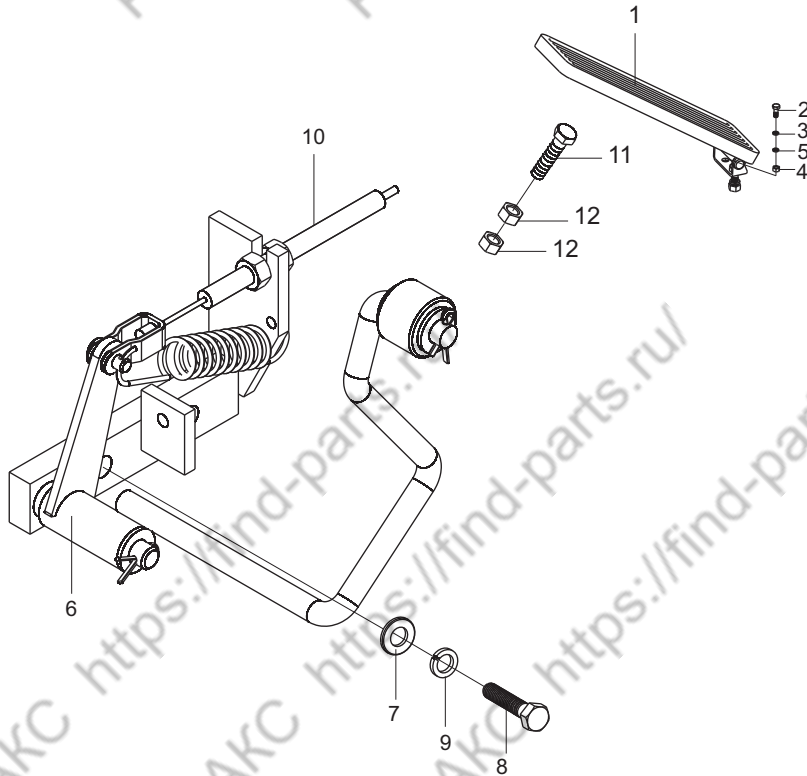
LG45D(T)、LG50DTQ



序号 Item No	编 码 Code	图 号 Part No	零 部 件 名 称 Description	数 量 Q'ty	备 注 Remark
1	60205000175	LG0025D.02.01.02.01	轮胎7.00-12-12PR Tire 7.00-12-12PR	2	
2	60205000150	LG0045DT.03.03.01	轮辋总成5.00S-12 Rim 5.00S-12	4	
3	30003035316	LG0045DT.03.02	转向桥总成 Steering axle assembly	1	

油门操纵/Throttle control

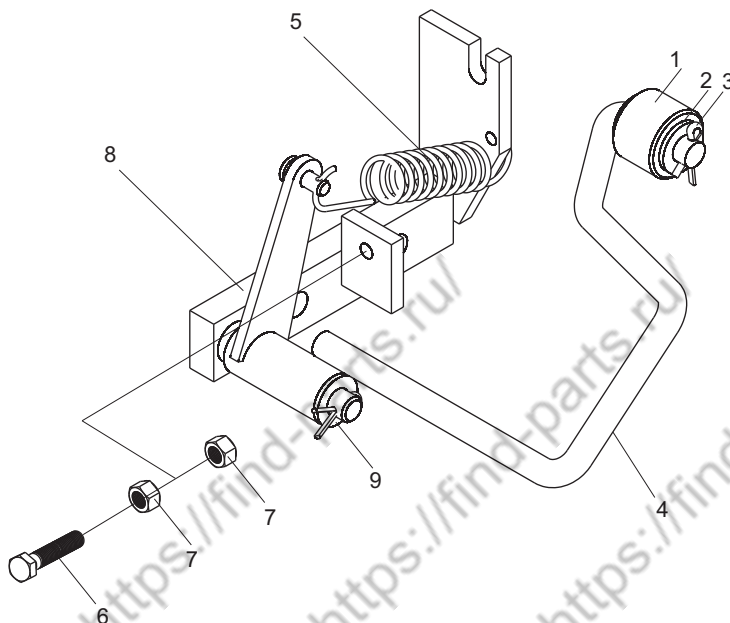
LG45D(T)、LG50DTQ



序号 Item No	编 码 Code	图 号 Part No	零 部 件 名 称 Description	数量 Q'ty	备 注 Remark
1	60207030025	30D-0401000	踏板总成 Pedal assembly	1	
2	51204081014	GB/T5783	螺栓M6×20 Bolt M6×20	2	
3	51401080107	GB/T93	垫圈6 Washer 6	2	
4	51307000819	GB/T6170	螺母M6 Nut M6	2	
5	51420080121	GB/T96.1	垫圈6 Washer 6	2	
6	30004041608	LG0045DT.04.01	油门支架总成 Accelerator bracket assembly	1	
7	51421090115	GB/T97.1	垫圈8 Washer 8	2	
8	51204091114	GB/T5783	螺栓M8×25 Bolt M8×20	2	
9	51401090107	GB/T93	垫圈8 Washer 8	2	
10	60207020232	LG0045DT.04.04	油门拉索总成 Throttle cable assembly	1	45DT/50DTQ
	60207020230	LG0045D.04.01	拉索总成 Cable assembly	1	45D
11	51204091514	GB/T5783	螺栓M8×45 Bolt M8×45	1	
12	51307000919	GB/T6170	螺母M8 Nut M8	2	

油门支架总成/Throttle bracket assembly

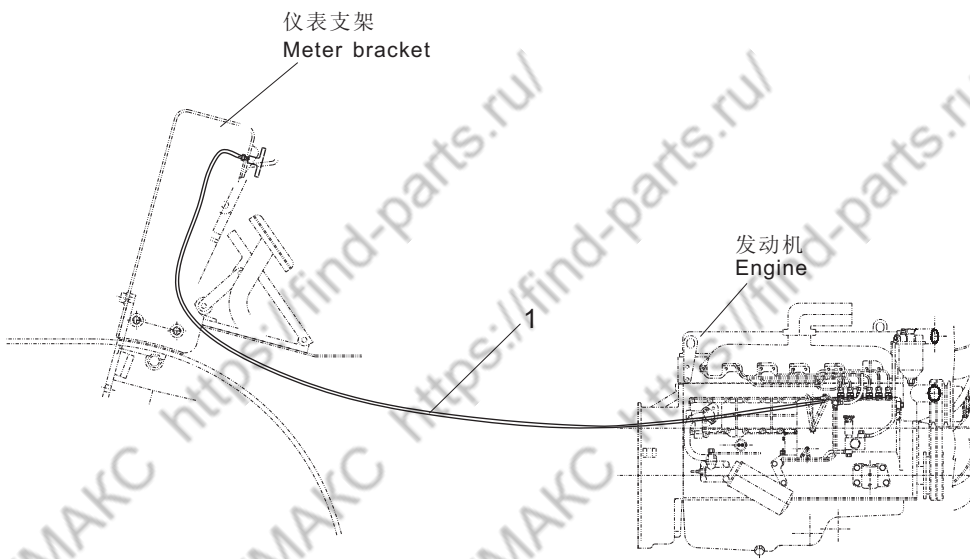
LG45D(T)、LG50DTQ



序号 Item No	编 码 Code	图 号 Part No	零 部 件 名 称 Description	数 量 Q'ty	备 注 Remark
1	30004141001	30D-0411001	滚轮 Roller	1	
2	51512081001	GB/T91	开口销3.2×20 Cotter pin 3.2×20	2	
3	51421100115	GB/T97.1	垫圈10 Plain washer 10	2	
4	30004018111	LG0045DT.04.01.01	支架焊合 Bracket welding	1	
5	30004140103	LG0045DT.04.01-001	弹簧 Spring	1	
6	51204081514	GB/T5783	螺栓M6×45 Bolt M6×45	1	
7	51307000819	GB/T6170	螺母M6 Nut M6	2	
8	30004018100	LG0045DT.04.01.02	支架焊合 Bracket welding	1	
9	52011001101	GB/T12613.1	轴套10×12×10 Bushing 10×12×10	2	

熄火操纵/Flameout control

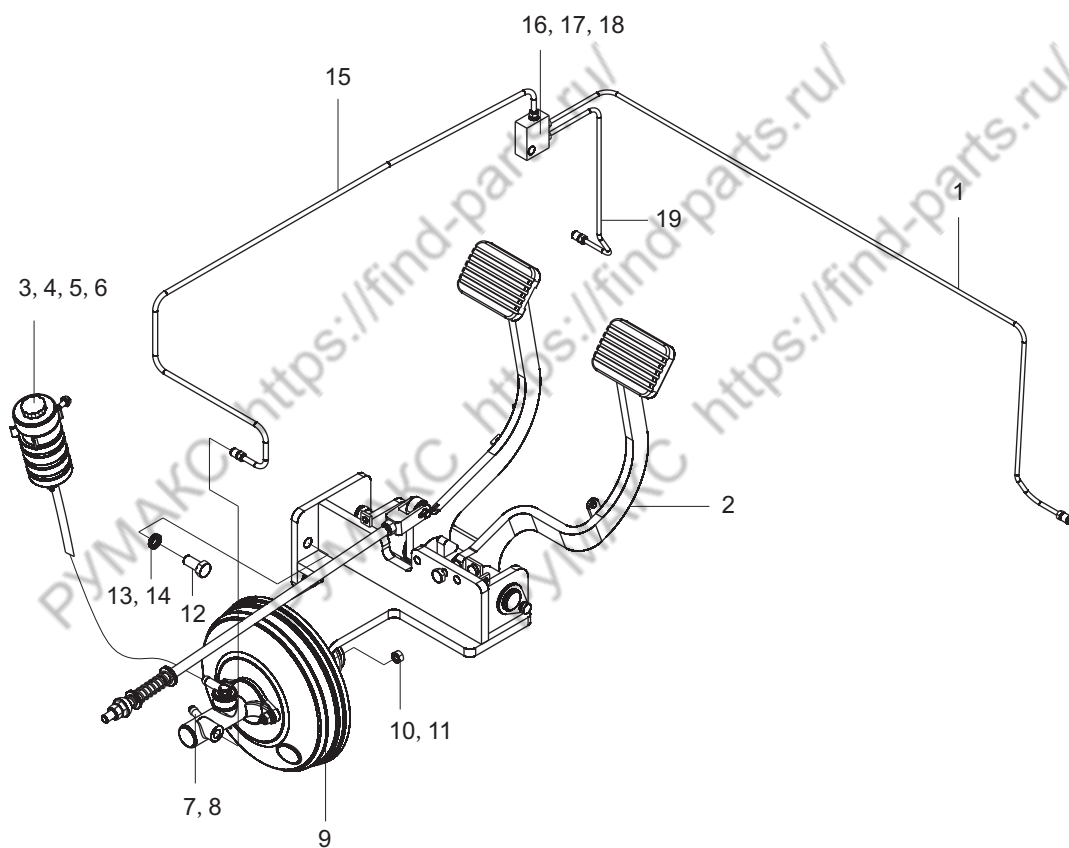
LG45D(T)、LG50DTQ



序号 Item No	编 码 Code	图 号 Part No	零 部 件 名 称 Description	数 量 Q'ty	备 注 Remark
1	60207020233	LG0045DT.05.01	拉索总成 Cable assembly	1	

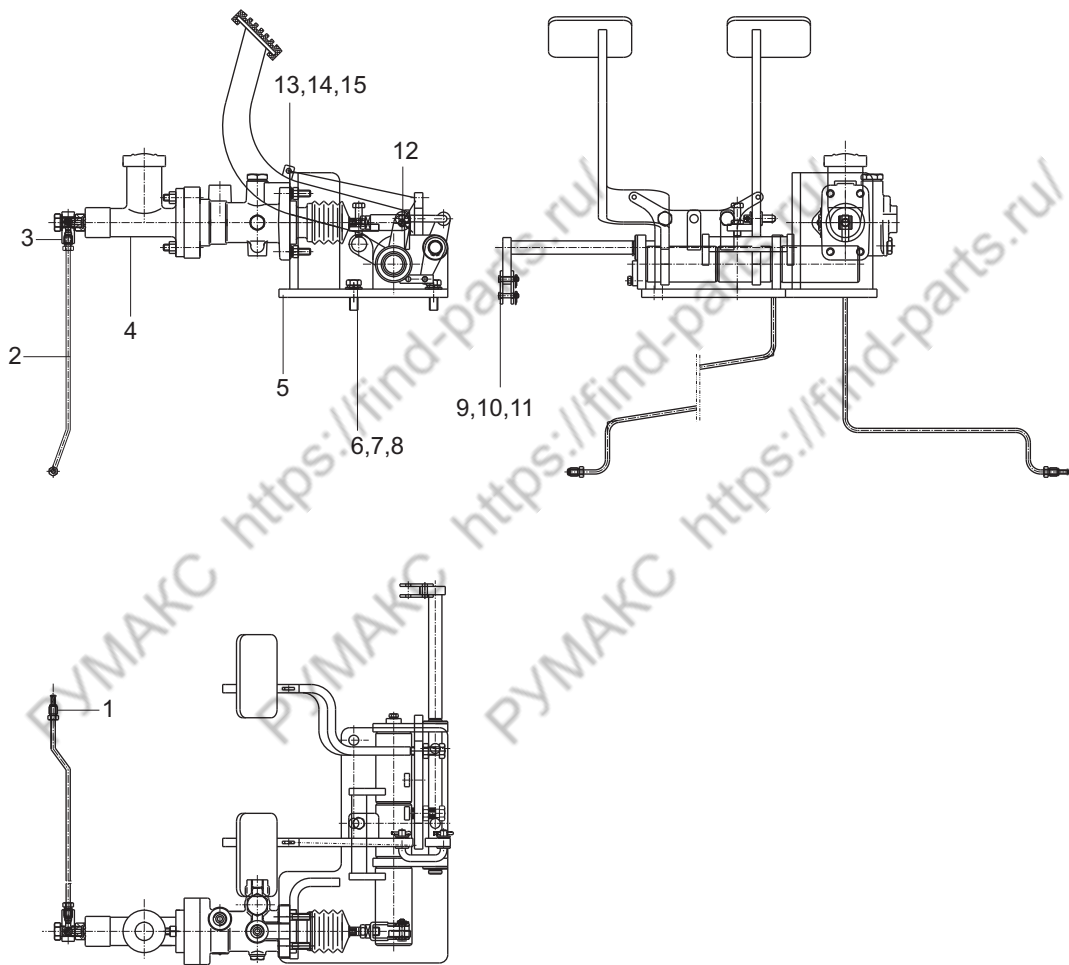
行车制动系统/Service brake system

LG45D



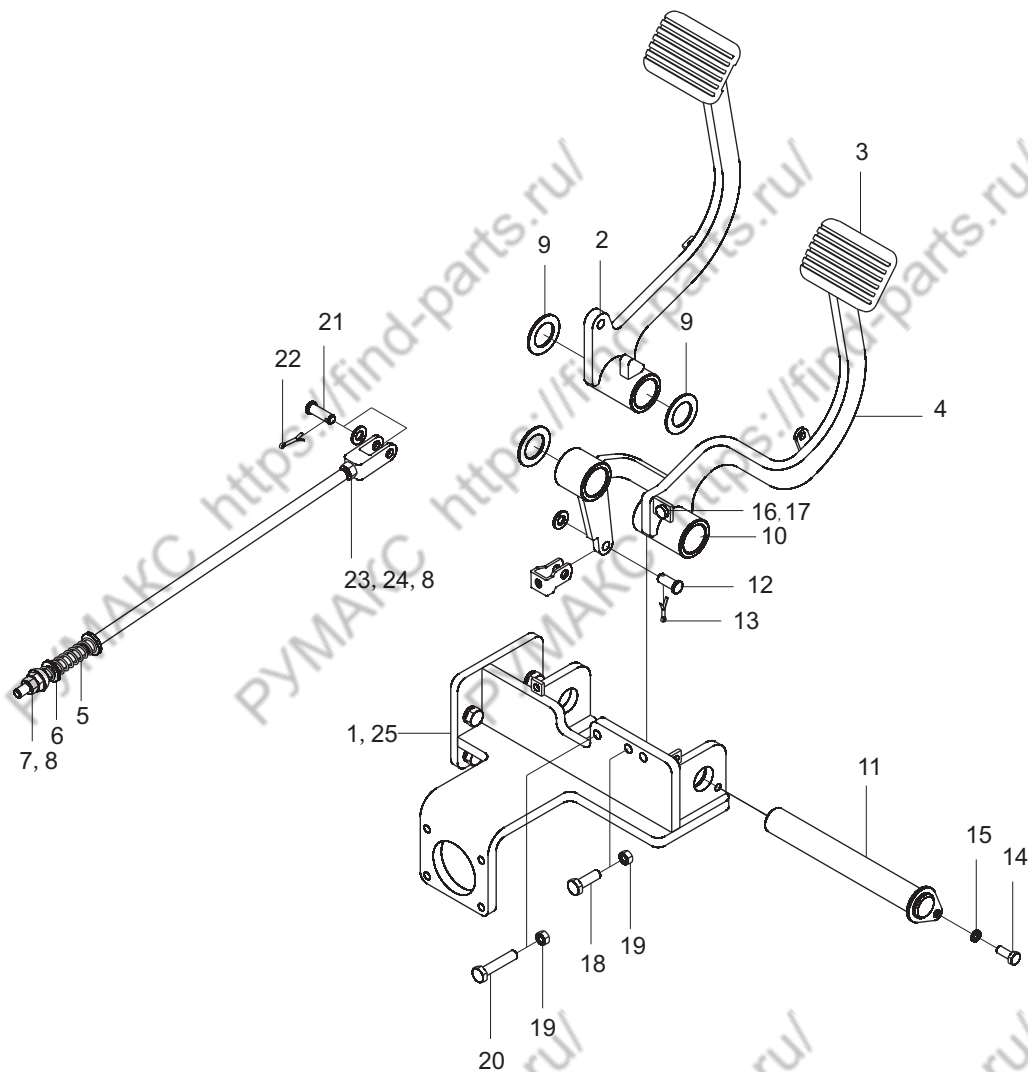
行车制动与离合操纵/Brake & clutch control

LG45DT、LG50DTQ



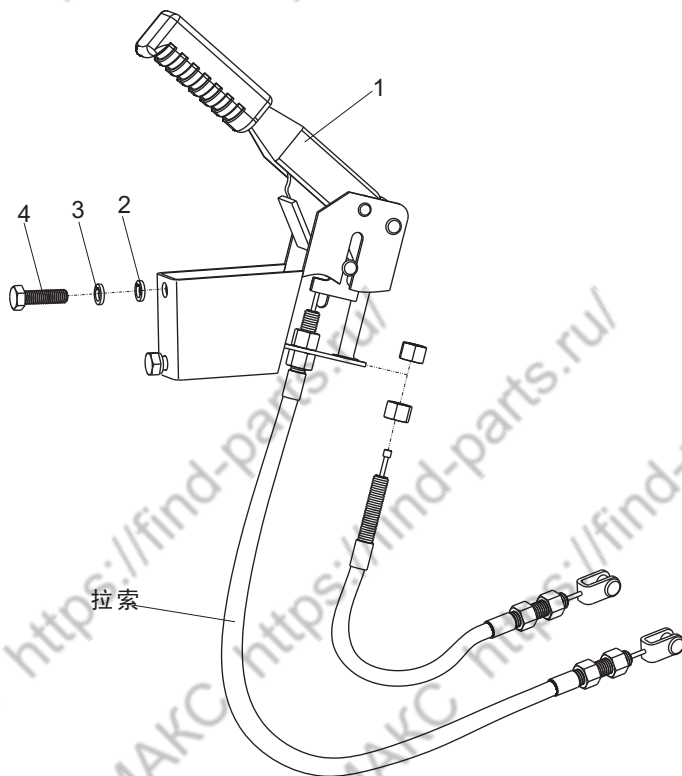
行车制动总成 / Service brake assembly

LG45D



停车制动操纵/Parking brake control

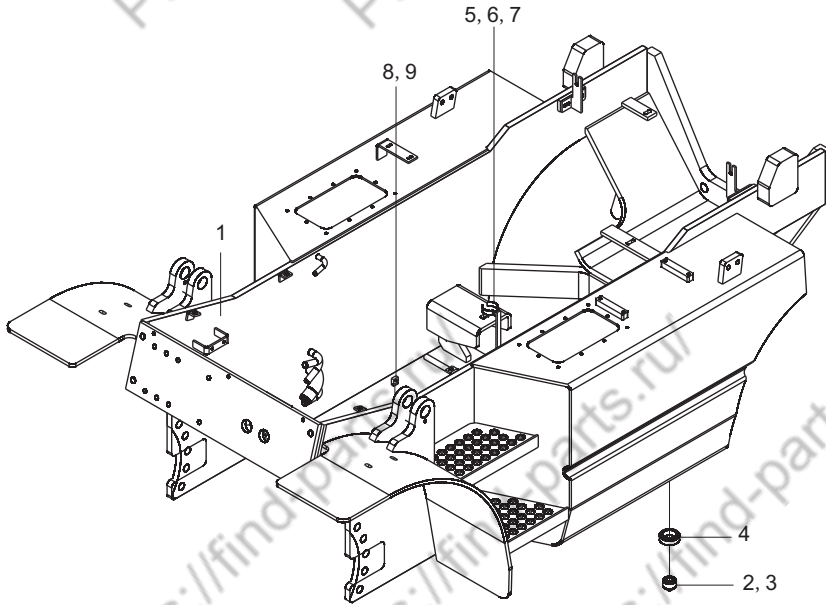
LG45D(T)、LG50DTQ



序号 Item No	编 码 Code	图 号 Part No	零 部 件 名 称 Description	数 量 Q'ty	备 注 Remark
1	60208000088	LG0030D.07.01	手制动手柄总成 Parking brake assembly	1	
2	51204101114	GB/T5783	螺栓M10×25 Bolt M10×25	2	
3	51401100107	GB/T93	垫圈10 Spring lock washer 10	2	
4	51421100115	GB/T97.1	垫圈10 Plain washer 10	2	

车架/Frame

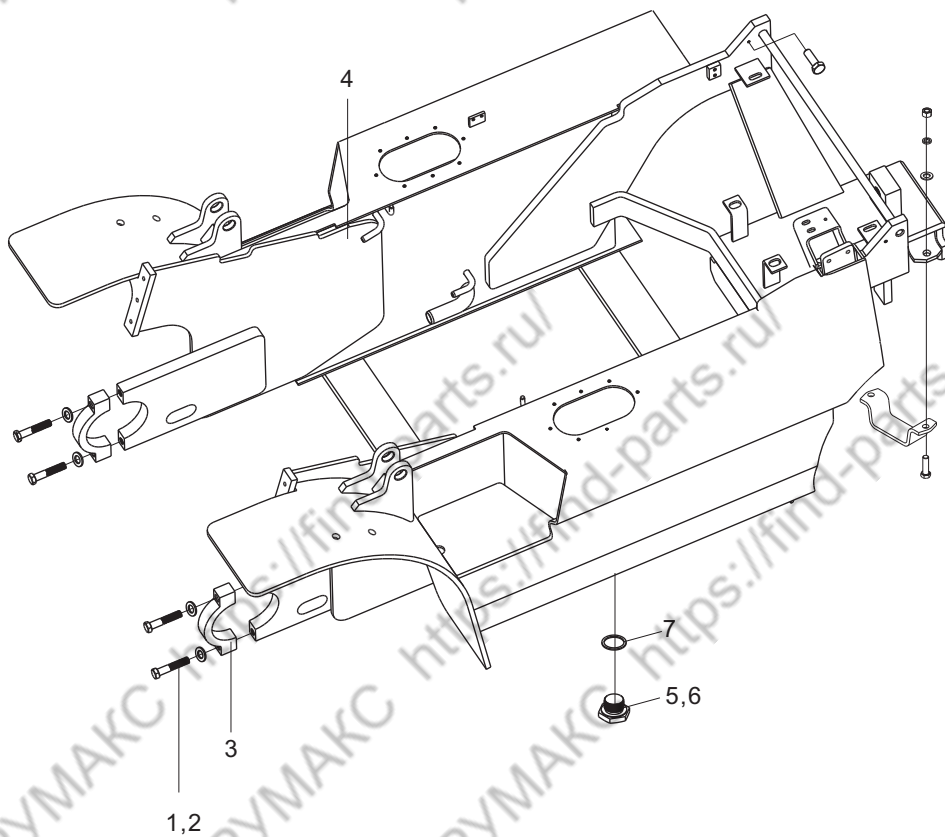
LG45D



序号 Item No	编 码 Code	图 号 Part No	零部件名称 Description	数量 Q'ty	备 注 Remark
1	30008050001	LG0045D.08.01	车架焊合 Frame weldment	1	
2	56302000602	JB/ZQ4444	螺塞M18×1.5 Plug M18×1.5	2	
3	56147010601	JB/T982	组合垫圈18 O-ring 18	2	
4	60980000538	20B-1206005	磁铁50×25×8 Magnet 50×25×8	2	
5	30008018104	LG0030D.08.07	支架焊合 Bracket weldment	1	
6	51401090107	GB/T93	垫圈8 Spring lock washer 8	2	
7	51204091014	GB/T5783	螺栓M8×20 Bolt M8×20	2	
8	30008153102	LG0060DT.08.01.06-001	压板 Pressure plate	2	
9	51158170404	GB/T818	螺钉M5×12 Screw M5×12	2	

车架/Frame

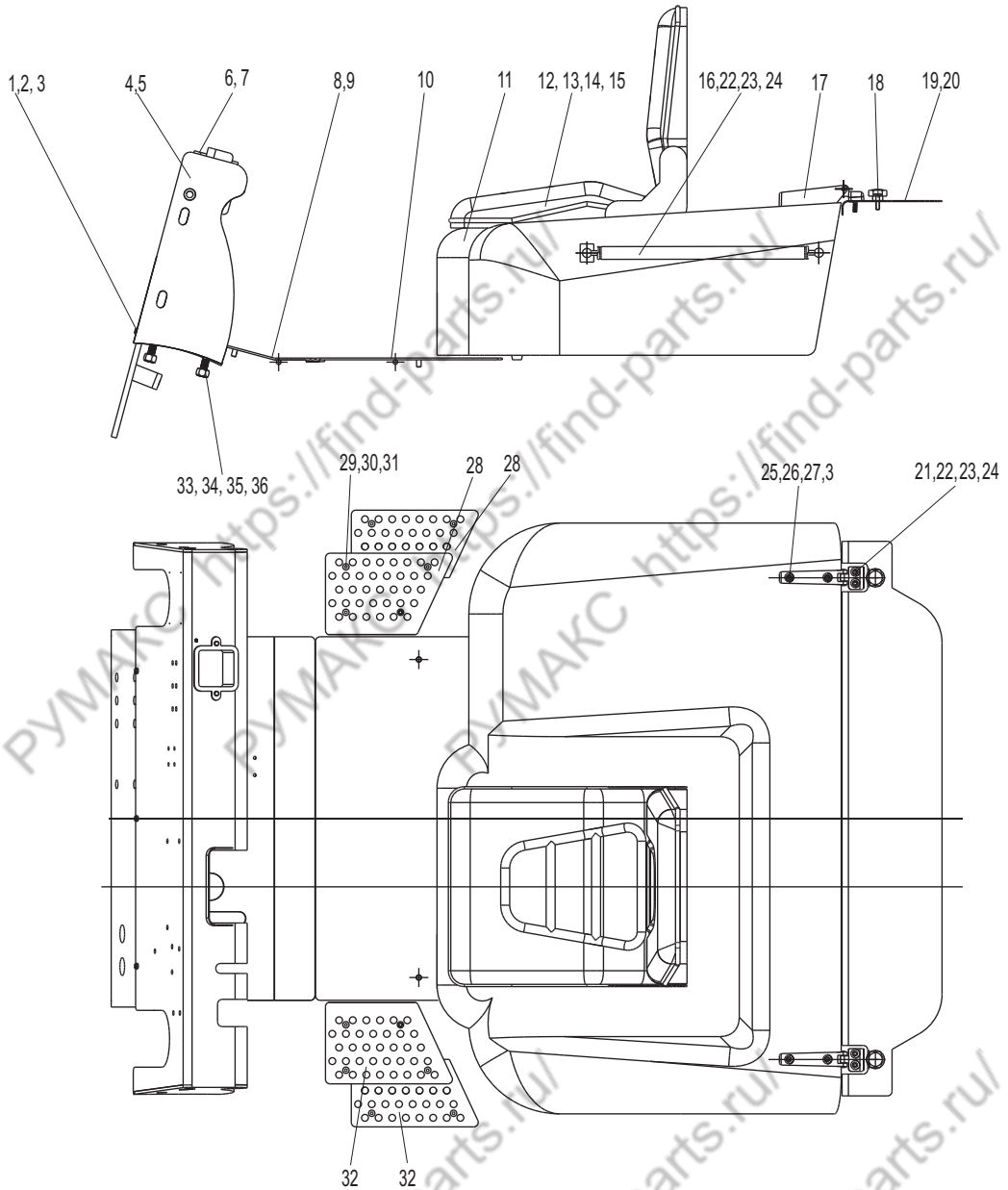
LG45DT、LG50DTQ



序号 Item No	编 码 Code	图 号 Part No	零 部 件 名 称 Description	数 量 Q'ty	备 注 Remark
1	51401150107	GB/T93	垫圈20 Spring lock washer 20	4	
2	51210152414	GB/T5785	螺栓M20×1.5×90 Bolt M20×1.5×90	4	
3	30008118503	LG0045DT.08-001	端盖 Bushing	2	
4	30008050035	LG0045DT.08.01	车架焊合 Frame weldment	1	
5	56302000602	JB/ZQ4444	放油螺塞M18×1.5 Plug M18×1.5	2	
6	30008154200	LG0060DT.08-003	磁铁70×32×15 Magnet 70×32×15	2	
7	56147010601	JB/T982	组合垫圈18 O-ring 18	2	

覆盖件系统/Mantle system

LG45D

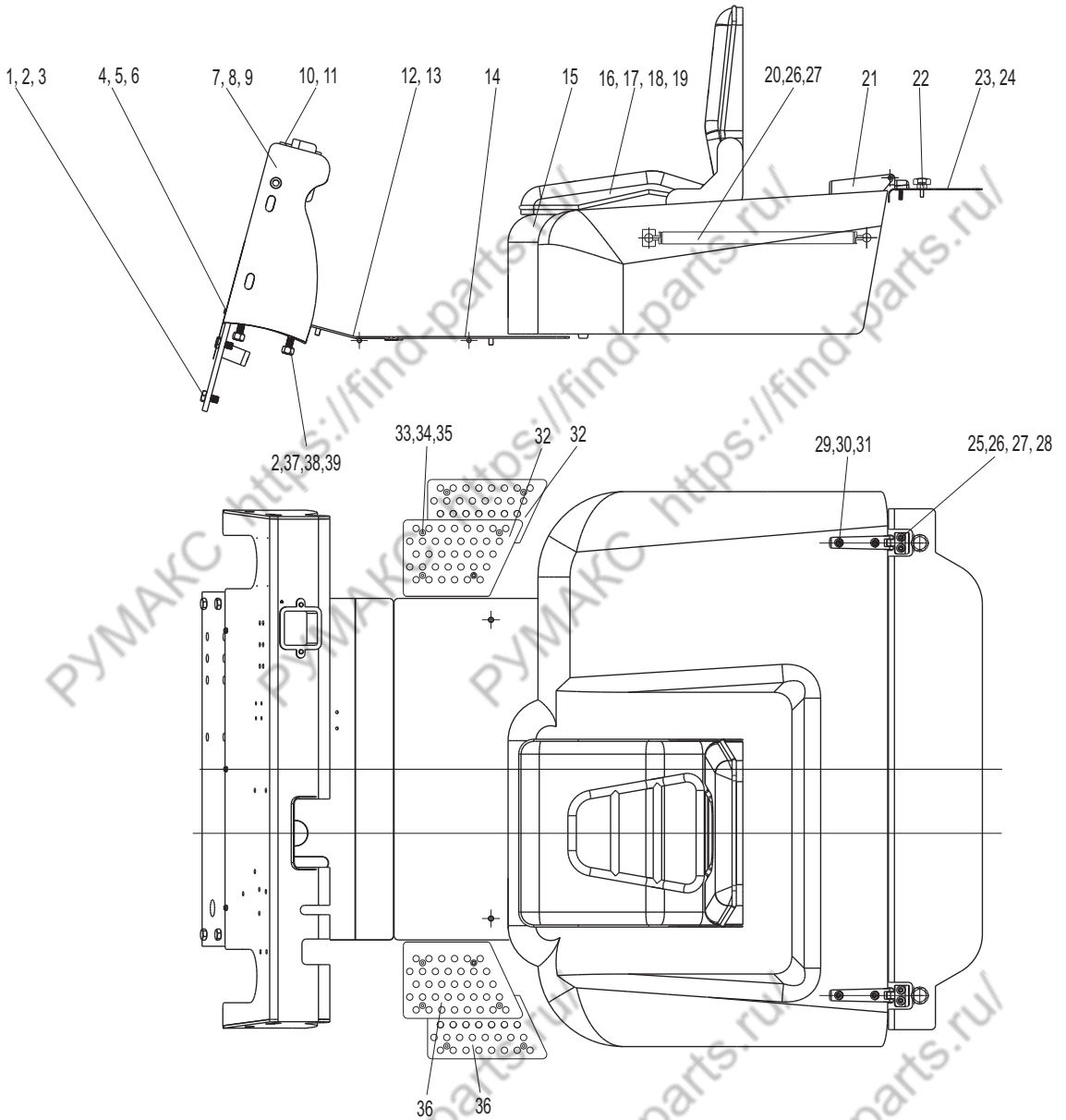


覆盖件系统/Mantle system

序号 Item No	编 码 Code	图 号 Part No	零 部 件 名 称 Description	数量 Q'ty	备 注 Remark	
1	51204101014	GB/T5783	螺栓M10×20	Bolt M10×20	3	
2	51401100107	GB/T93	垫圈10	Washer 10	3	
3	51420100121	GB/T96.1	垫圈10	Washer 10	7	
4	30009058008	LG0045DT.09.01	仪表架焊合	Cabinet weldment	1	
5	60980000270	30D-0900011	出线胶圈	Rubber ring	2	
6	60903000019	LG0030D.09-008	工具箱	Kit	1	
7	51158190504	GB/T818	螺钉M6×16	Screw M6×16	2	
8	30009045925	LG0045DT.09.03	底板焊合	Bottom board weldment	1	
9	30009113911	LG0045D.09-001	橡胶垫	Rubber gasket	1	
10	30009045935	LG0045D.09.01	底板焊合	Bottom board weldment	1	
11	30009046007	LG0045DT.09.05	发动机罩总成	Engine cover assembly	1	
12	60920011458	LG0030D.09.06	座椅总成	Seat assembly	1	
13	51204091214	GB/T5783	螺栓M8×30	Bolt M8×30	4	
14	51347000319	GB/T6184	螺母M8	Nut M8	4	
15	51420090121	GB/T96.1	垫圈8	Washer 8	4	
16	60920011460	LG0160DT.09.20	气弹簧总成	Air spring assembly	1	
17	60701010156	LG0030D.09.08	铰链合件	Hinge	2	
18	30009157300	20B-0900003	螺钉	Screw	2	
19	30009157606	LG0045DT.09-007	散热器罩	Cooler cover	1	
20	60980004829	LG0045DT.09-003	U形装饰条	U decoration stripe	1	
21	51139210505	GB/T70.1	螺钉M8×25	Screw M8×25	4	
22	51401090107	GB/T93	垫圈8	Washer 8	5	
23	51421090115	GB/T97.1	垫圈8	Washer 8	9	
24	51307000919	GB/T6170	螺母M8	Nut M8	5	
25	51139220605	GB/T70.1	螺钉M10×40	Screw M10×10	4	
26	51421100115	GB/T97.1	垫圈10	Washer 10	4	
27	51347000419	GB/T6184	螺母M10	Nut M10	4	
28	30009147000	LG0045DT.09-002	踏板垫	Pedal gasket	2	
29	51204081014	GB/T5783	螺栓M6×20	Screw M6×20	16	
30	51420080121	GB/T96.1	垫圈6	Washer 6	32	
31	51341000419	GB/T889.1	螺母M6	Nut M6	16	
32	30009147001	LG0045DT.09-004	踏板垫	Pedal gasket	2	
33	51204111614	GB/T5783	螺栓M12×50	Bolt M12×50	4	
34	51307001119	GB/T6170	螺母M12	Nut M12	4	
35	51401110107	GB/T93	垫圈12	Washer 12	4	
36	51420110121	GB/T96.1	垫圈12	Washer 12	8	

覆盖件系统/Mantle system

LG45DT、LG50DTQ

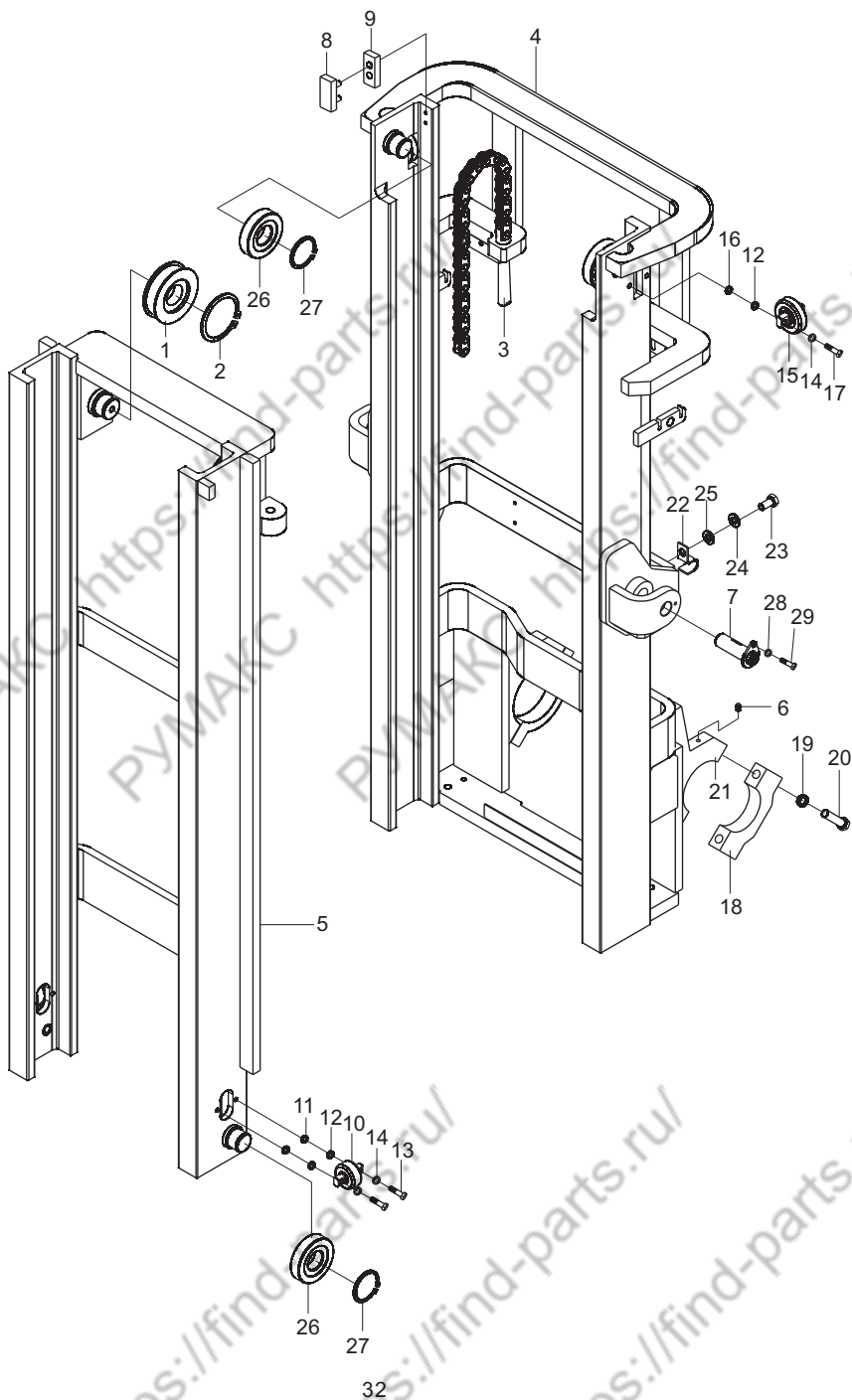


覆盖件系统/Mantle system

序号 Item No	编 码 Code	图 号 Part No	零 部 件 名 称 Description	数量 Q'ty	备 注 Remark
1	51204111114	GB/T5783	螺栓M12×25 Bolt M12×25	4	
2	51401110107	GB/T93	垫圈12 Washer 12	8	
3	51421110115	GB/T97.1	垫圈12 Washer 12	4	
4	51204101014	GB/T5783	螺栓M10×20 Bolt M10×20	3	
5	51401100107	GB/T93	垫圈10 Washer 10	3	
6	51420100121	GB/T96.1	垫圈10 Washer 10	7	
7	30009058008	LG0045DT.09.01	仪表架焊合 Cabinet weldment	1	
8	30009047107	LG0045DT.09.02	连接板焊合 Connecting plate weldment	1	
9	60980000270	30D-0900011	出线胶圈 Rubber ring	2	
10	60903000019	LG0030D.09-008	工具箱 Kit	1	
11	51158190504	GB/T818	螺钉M6×16 Screw M6×16	2	
12	30009045925	LG0045DT.09.03	底板焊合 Bottom plate weldment	1	
13	30009113907	LG0045DT.09-001	橡胶垫 Rubber gasket	1	
14	30009045926	LG0045DT.09.04	底板焊合 Bottom plate weldment	1	
15	30009046007	LG0045DT.09.05	发动机罩总成 Engine hood assembly	1	
16	60920011458	LG0030D.09.06	座椅总成 Seat assembly	1	
17	51204091214	GB/T5783	螺栓M8×30 Bolt M8×30	4	
18	51347000319	GB/T6184	螺母M8 Nut M8	4	
19	51420090121	GB/T96.1	垫圈8 Washer 8	4	
20	60920011460	LG0160DT.09.20	气弹簧总成 Air spring assembly	1	
21	60701010156	LG0030D.09.08	铰链合件 Hinge	2	
22	30009157300	20B-0900003	螺钉 Screw	2	
23	30009157606	LG0045DT.09-007	散热器罩 Cooler cover	1	
24	60980004829	LG0045DT.09-003	U形装饰条 U decoration stripe	1	
25	51139210505	GB/T70.1	螺钉M8×25 Screw M8×25	4	
26	51401090107	GB/T93	垫圈8 Washer 8	5	
27	51421090115	GB/T97.1	垫圈8 Washer 8	9	
28	51307000919	GB/T6170	螺母M8 Nut M8	5	
29	51139220605	GB/T70.1	螺钉M10×40 Screw M10×40	4	
30	51421100115	GB/T97.1	垫圈10 Rubber board	4	
31	51347000419	GB/T6184	螺母M10 Screw M8×20	4	
32	30009147000	LG0045DT.09-002	踏板垫 Pedal gasket	2	
33	51204081014	GB/T5783	螺栓M6×20 Bolt M6×20	16	
34	51420080121	GB/T96.1	垫圈6 Washer 6	32	
35	51341000419	GB/T889.1	螺母M6 Nut M6	16	
36	30009147001	LG0045DT.09-004	踏板垫 Pedal gasket	2	

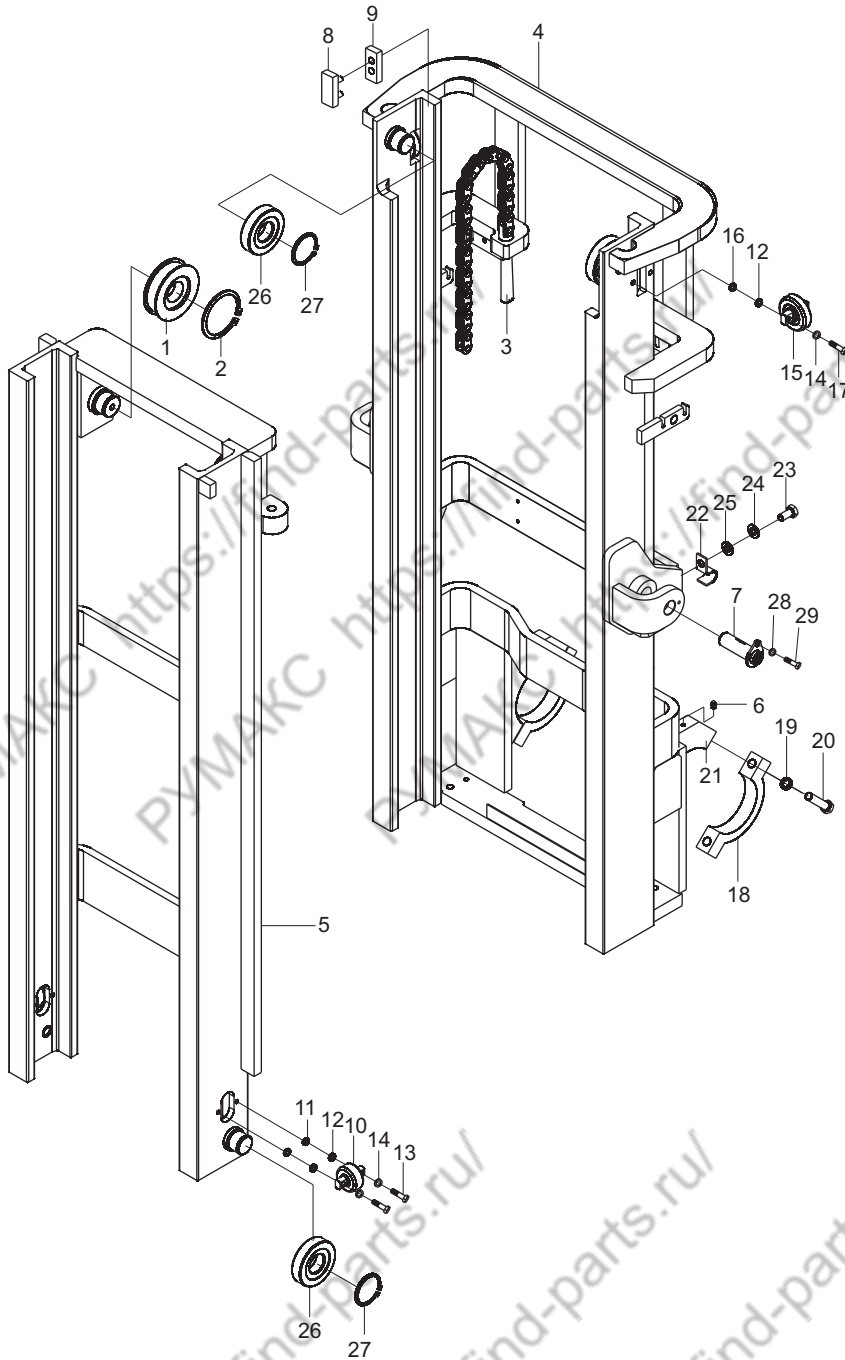
门架(基本型) / Mast (normal mast)

LG45D



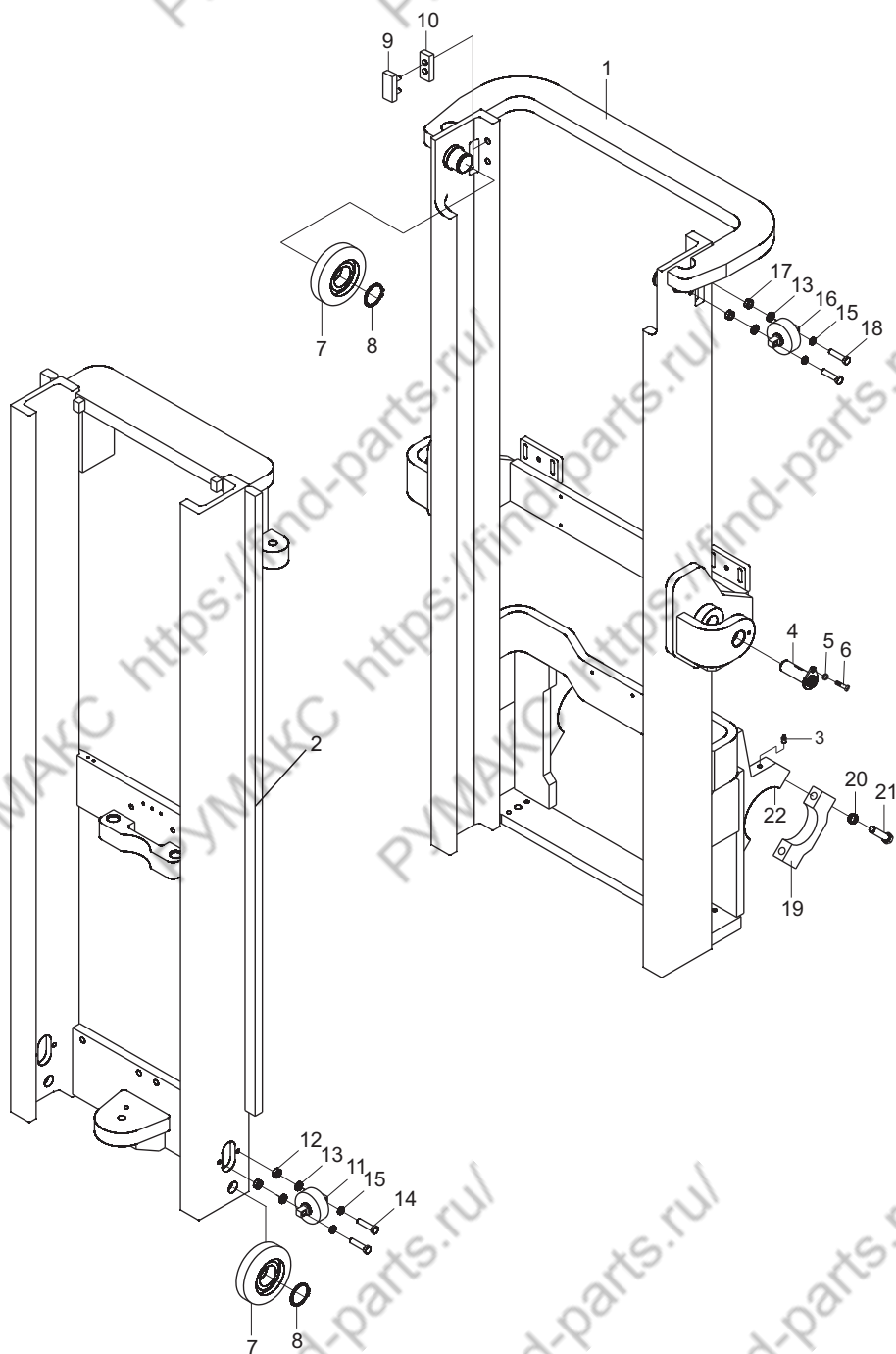
门架(基本型) / Mast (normal mast)

LG45DT、LG50DTQ



门架(二级全自由) / Mast (full free 2-stage mast)

LG45D



门架(二级全自由) / Mast (full free 2-stage mast)

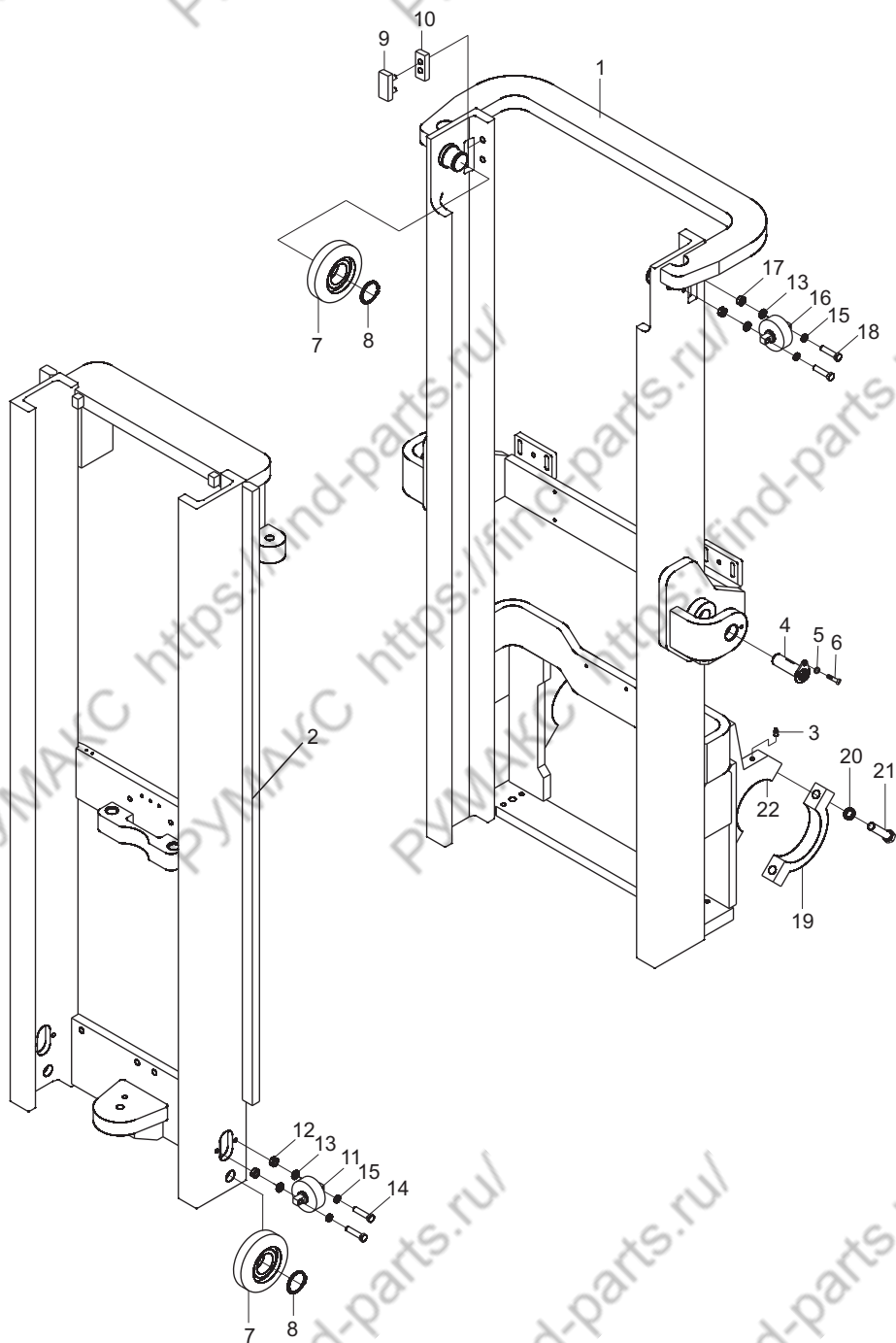
序号 Item No	编 码 Code	图 号 Part No	零 部 件 名 称 Description	数 量 Q'ty	备 注 Remark
1	30086082606	LG0045D.10A.01	外门架焊合 Outer mast weldment	1	
2	30086081600	LG0045D.10A.02	内门架焊合 Inner mast weldment	1	
3	56201000301	JB/T7940.1	油杯M10×1 Oil cup M10×1	4	
4	30086025001	LG0045DT.10.07	销轴焊合 Pin shaft weldment	2	
5	51401100107	GB/T93	垫圈10 Washer 10	4	
6	51204101114	GB/T5783	螺栓M10×25 Bolt M10×25	4	
7	30086141005	LG0045D.10.10	滚轮 Roller	4	
8	51453400107	GB/T894.1	挡圈50 Circlip 50	4	
9	30082185100	LG0030D.10-007	滑块 Slide block	2	
10	30082154800	LG0030D.10-008	滑块调整垫片 Adjusted gasket	2	
11	30086141000	LG0045DT.10-001	滚轮 Roller	2	
12	30086106401	LG0045D.10-008	垫圈 Washer	4	
13	30082054803	LG0060DT.10.13	调整垫 Adjusted Gasket	8	
14	51204111614	GB/T5783	螺栓M12×50 Bolt M12×50	4	
15	51401110107	GB/T93	垫圈M12 Washer 12	8	
16	30086081401	LG0045D.10.09	滚轮总成 Roller assembly	2	
17	30086106400	LG0060DT.10-007	垫圈 Washer	4	
18	51204111514	GB/T5783	螺栓M12×45 Bolt M12×45	4	
19	30086118502	LG0045D.10-005	端盖 End cover	2	
20	51401150107	GB/T93	垫圈20 Washer 20	4	
21	51210152714	GB/T5785	螺栓M20×1.5×110 Bolt M20×15×110	4	
22	30086184502	LG0045D.10-006	轴衬 Bushing	2	

参数/Parameter

编 码 Code	起升高度 Lifting H	内门架 Inner mast	外门架 Outer mast	链条编码 Code,chain	链条节数 Chain,leaf	备 注 Remark
30086912018	2000	30086081601	30086082607	30082080423	55	
30086912019	2500	30086081602	30086082608	30082080417	63	
30086912017	3000	30086081600	30086082606	30082080417	63	标准
30086912020	3300	30086081603	30086082609	30082080401	69	
30086912021	3500	30086081604	30086082610	30082080402	73	
30086912022	3750	30086081605	30086082611	30082080403	79	
30086912023	4000	30086081606	30086082612	30082080419	83	

门架(二级全自由) / Mast (full free 2-stage mast)

LG45DT、LG50DTQ



门架(二级全自由) / Mast (full free 2-stage mast)

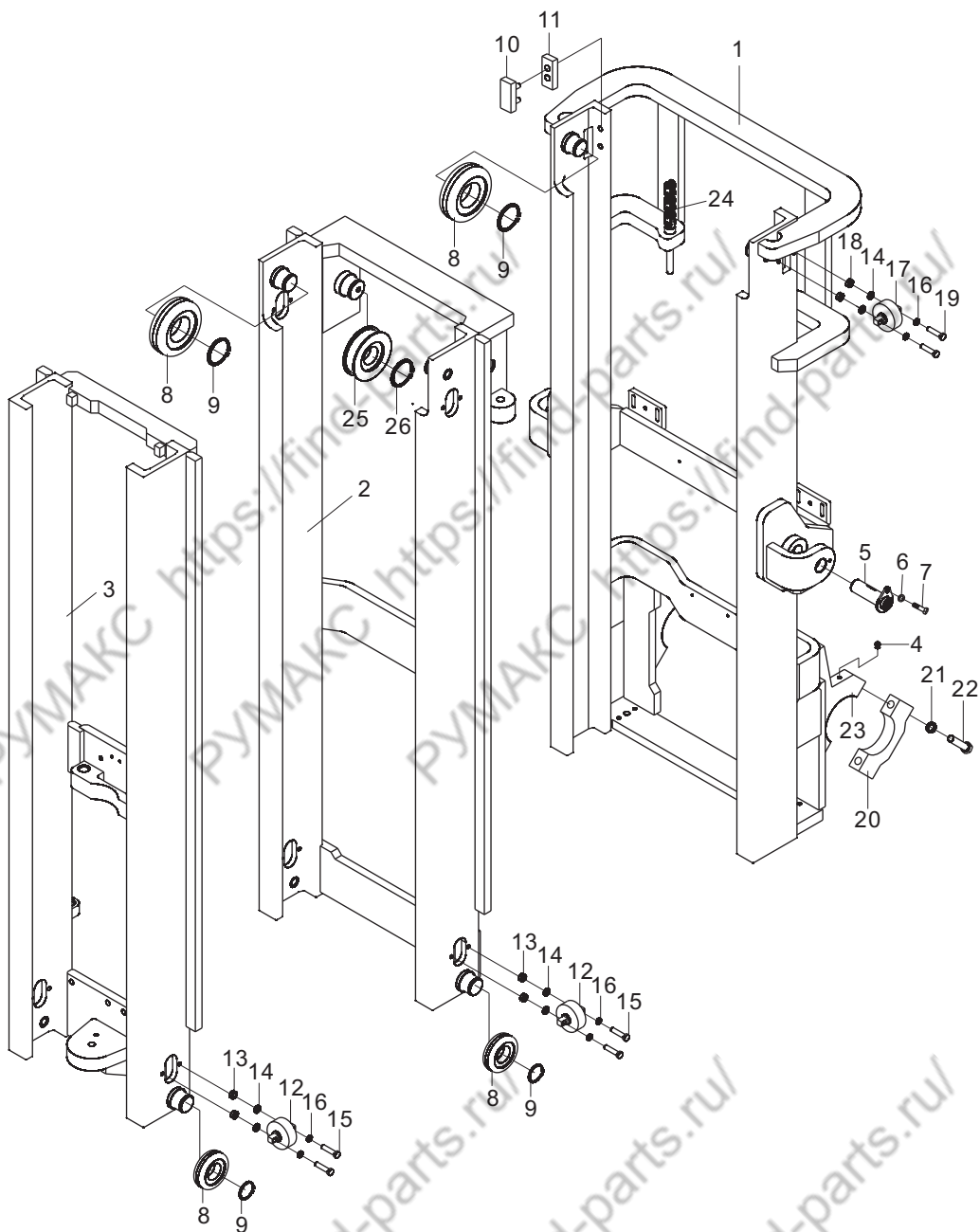
序号 Item No	编 码 Code	图 号 Part No	零部件名称 Description	数量 Q'ty	备 注 Remark
1	30086082613	LG0045DT.10A.01	外门架焊合 Outer mast weldment	1	
2	30086081600	LG0045D.10A.02	内门架焊合 Inner mast weldment	1	
3	56201000301	JB/T7940.1	油杯M10X1 Oil cup M10×1	4	
4	30086025000	LG0045DT.10.05	销轴焊合 Pin shaft weldment	2	
5	51401100107	GB/T93	垫圈10 Washer 10	4	
6	51204101114	GB/T5783	螺栓M10x25 Bolt M10×25	4	
7	30086141005	LG0045D.10.10	滚轮 Roller	4	
8	51453400107	GB/T894.1	挡圈50 Circlip 50	4	
9	30082185100	LG0030D.10-007	滑块 Slide block	2	
10	30082154800	LG0030D.10-008	滑块调整垫片 Adjustment gasket	2	
11	30086141000	LG0045DT.10-001	滚轮 Roller	2	
12	30086106401	LG0045D.10-008	垫圈 Washer	4	
13	30082054803	LG0060DT.10.13	调整垫 Adjustment gasket	4	
14	51204111614	GB/T5783	螺栓M12×50 Bolt M12×50	4	
15	51401110107	GB/T93	垫圈12 Washer 12	8	
16	30086081401	LG0045D.10.09	滚轮总成 Roller assembly	2	
17	30086106400	LG0060DT.10-007	垫圈 Washer	4	
18	51204111514	GB/T5783	螺栓M12X45 Bolt M12×45	4	
19	30008118503	LG0045DT.08-001	端盖 End cover	2	
20	51401150107	GB/T93	垫圈20 Washer 20	4	
21	51210152414	GB/T5785	螺栓M20x1.5x90 Bolt M20×15×90	4	
22	30086184500	LG0045DT.10-005	轴衬 Bushing	2	

参数/Parameter

编 码 Code	起升高度 Lifting H	内门架 Inner mast	外门架 Outer mast	链条编码 Code,chain	链条节数 Chain,leaf	备 注 Remark
30086912025	2000	30086081601	30086082614	30082080423	55	
30086912026	2500	30086081602	30086082615	30082080417	63	
30086912024	3000	30086081600	30086082613	30082080417	63	标准
30086912027	3300	30086081603	30086082616	30082080401	69	
30086912028	3500	30086081604	30086082617	30082080402	73	
30086912029	3750	30086081605	30086082618	30082080403	79	
30086912030	4000	30086081606	30086082619	30082080419	83	

门架(三级全自由) / Mast (full free 3-stage mast)

LG45D



门架(三级全自由) / Mast (full free 3-stage mast)

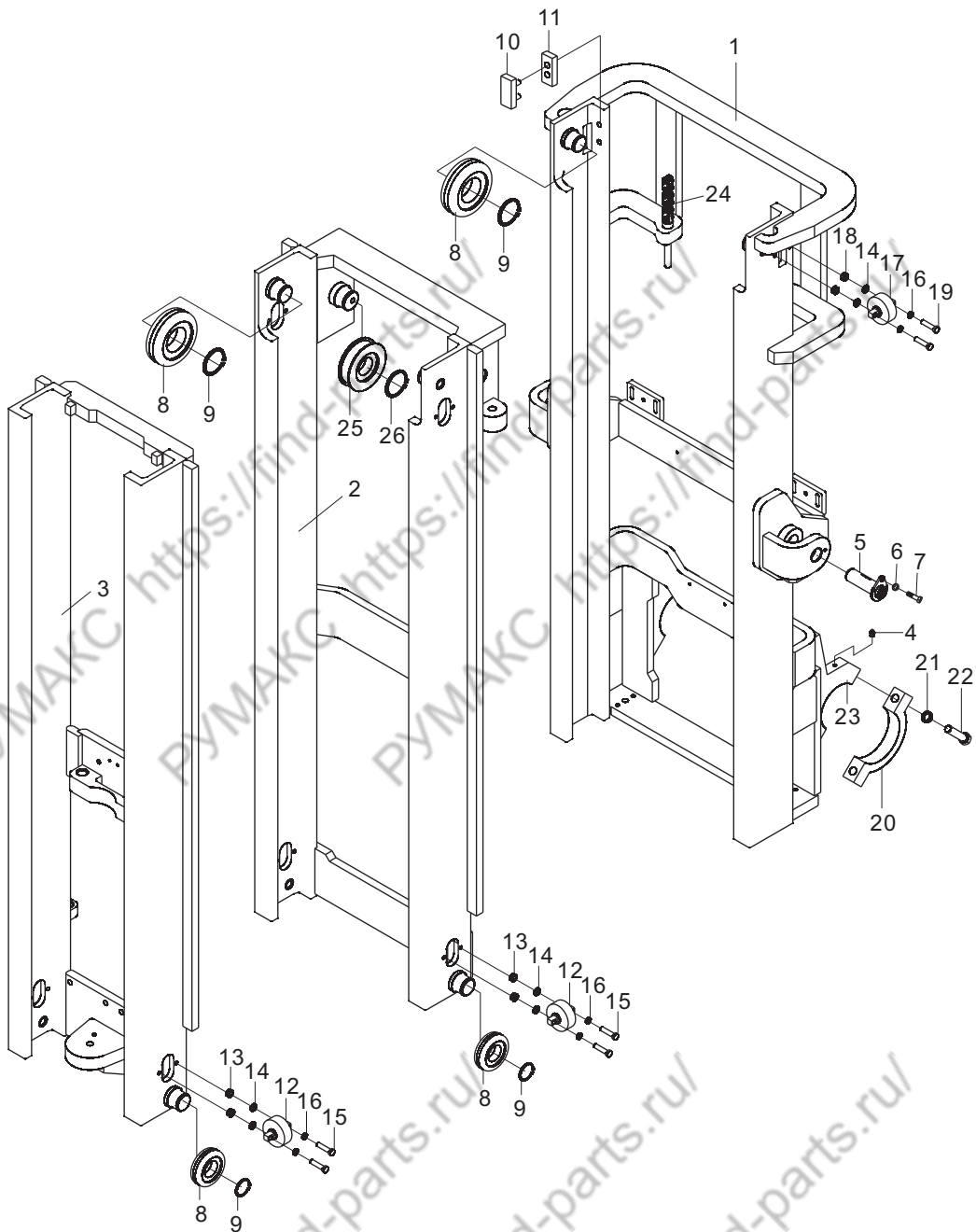
序号 Item No	编 码 Code	图 号 Part No	零部件名称 Description	数量 Qty	备 注 Remark
1	30086082630	LG0045D.10B.01	外门架 Outer mast	1	
2	30086085313	LG0045D.10B.02	中门架 Middle mast	1	
3	30086081609	LG0045D.10B.03	内门架 Inner mast	1	
4	56201000301	JB/T7940.1	油杯M10×1 Oil cup M10×1	4	
5	30086025001	LG0045DT.10.07	销轴焊合 Pin shaft	2	
6	51401100107	GB/T93	垫圈10 Washer 10	4	
7	51204101114	GB/T5783	螺栓M10×25 Bolt M10×25	4	
8	30086141005	LG0045D.10.10	滚轮 Roller	8	
9	51453400107	GB/T894.1	挡圈50 Circlip 50	8	
10	30082185100	LG0030D.10-007	滑块 Slide block	4	
11	30082154800	LG0030D.10-008	调整垫 Adjustment gasket	4	
12	30086141000	LG0045DT.10-001	滚轮 Roller	4	
13	30086106401	LG0045D.10-008	垫圈 Washer	8	
14	30082054803	LG0060DT.10.13	调整垫 Adjustment gasket	12	
15	51204111614	GB/T5783	螺栓M12×50 Bolt M12×50	8	
16	51401110107	GB/T93	垫圈12 Washer 12	12	
17	30086081401	LG0045D.10.09	滚轮总成 Roller assembly	2	
18	30086106400	LG0060DT.10-007	垫圈 Washer	4	
19	51204111514	GB/T5783	螺栓M12×45 Bolt M12×45	4	
20	30086118502	LG0045D.10-005	端盖 End cover	2	
21	51401150107	GB/T93	垫圈20 Washer 20	4	
22	51210152714	GB/T5785	螺栓M20×1.5×110 Bolt M20×1.5×110	4	
23	30086184502	LG0045D.10-006	轴衬 Bushing	2	
24	30086080400	LG0045D.10B.06	LH1634链条总成 Chain assembly LH1634	2	
25	30086185700	LG0040D.10-001	链轮782311 Chain wheel	4	
26	51453420107	GB/T894.1	挡圈55 Snap ring 55	4	

参数/Parameter

编 码 Code	起升高度 Lifting H	内门架 Inner mast	中门架 Middle mast	外门架 Outer mast	链条编码 Code,chain	链条节数 Chain,leaf	备 注 Remark
30086913019	4000	30086081607	30086085311	30086082628	30082080424	71	
30086913020	4350	30086081608	30086085312	30086082629	30082080425	77	
30086913021	4500	30086081609	30086085313	30086082630	30082080403	79	标准
30086913022	4800	30086081610	30086085314	30086082631	30082080419	83	
30086913023	5000	30086081611	30086085315	30086082632	30082080420	87	
30086913024	5400	30086081612	30086085316	30086082633	30082080402	91	
30086913025	6000	30086081613	30086085317	30086082634	30082080404	99	
30086913026	6500	30086081614	30086085318	30086082635	30082080416	107	

门架(三级全自由) / Mast (full free 3-stage mast)

LG45DT、LG50DTQ



门架(三级全自由) / Mast (full free 3-stage mast)

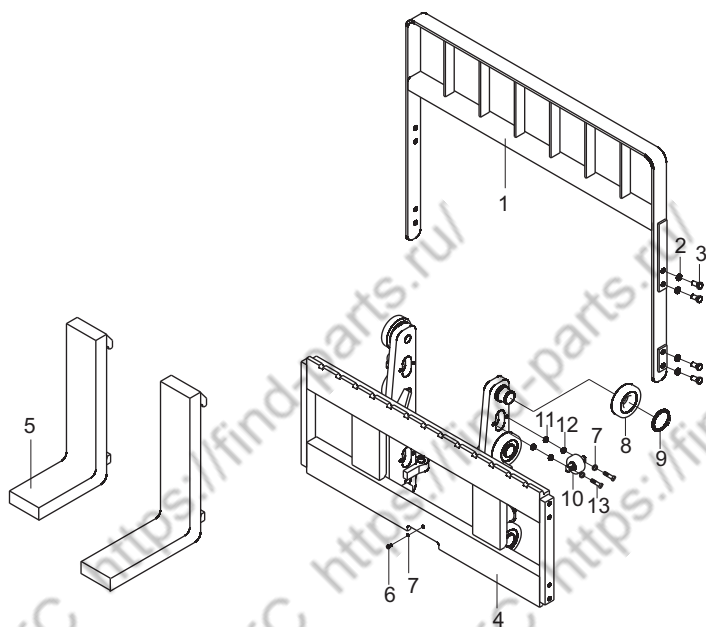
序号 Item No	编 码 Code	图 号 Part No	零 部 件 名 称 Description	数 量 Q'ty	备 注 Remark
1	30086082622	LG0045DT.10B.01	外门架焊合 Outer mast	1	
2	30086085313	LG0045D.10B.02	中门架焊合 Middle mast	1	
3	30086081609	LG0045D.10B.03	内门架焊合 Inner mast	1	
4	56201000301	JB/T7940.1	油杯M10×1 Oil cup M10×1	4	
5	30086025001	LG0045DT.10.07	销轴焊合 Pin shaft weldment	2	
6	51401100107	GB/T93	垫圈10 Washer 10	4	
7	51204101114	GB/T5783	螺栓M10×25 Bolt M10×25	4	
8	30086141005	LG0045D.10.10	滚轮 Roller	8	
9	51453400107	GB/T894.1	挡圈50 Circlip 50	8	
10	30082185100	LG0030D.10-007	滑块 Slide block	4	
11	30082154800	LG0030D.10-008	调整垫 Adjustment gasket	4	
12	30086141000	LG0045DT.10-001	滚轮 Roller	4	
13	30086106401	LG0045D.10-008	垫圈 Washer	8	
14	30082054803	LG0060DT.10.13	调整垫 Adjustment gasket	12	
15	51204111614	GB/T5783	螺栓M12×50 Bolt M12×50	8	
16	51401110107	GB/T93	垫圈12 Washer 12	12	
17	30086081401	LG0045D.10.09	滚轮总成 Roller assembly	2	
18	30086106400	LG0060DT.10-007	垫圈 Washer	4	
19	51204111514	GB/T5783	螺栓M12×45 Bolt M12×45	4	
20	30008118503	LG0045DT.08-001	端盖 End cover	2	
21	51401150107	GB/T93	垫圈20 Washer 20	4	
22	51210152414	GB/T5785	螺栓M20×1.5×90 Bolt M20×15×70	4	
23	30086184500	LG0045DT.10-005	轴衬 Bushing	2	
24	30082080403	LG0045D.10B.07	LH1634链条总成 Chain assembly	2	
25	30086185700	LG0040D.10-001	链轮782311 Chain wheel	4	
26	51453420107	GB/T894.1	挡圈55 Snap ring 55	4	

参数/Parameter

编 码 Code	起升高度 Lifting H	内门架 Inner mast	中门架 Middle mast	外门架 Outer mast	链条编码 Code,chain	链条节数 Chain,leaf	备 注 Remark
30086913019	4000	30086081607	30086085311	30086082620	30082080424	71	
30086913020	4350	30086081608	30086085312	30086082621	30082080425	77	
30086913021	4500	30086081609	30086085313	30086082622	30082080403	79	标准
30086913022	4800	30086081610	30086085314	30086082623	30082080419	83	
30086913023	5000	30086081611	30086085315	30086082624	30082080420	87	
30086913024	5400	30086081612	30086085316	30086082625	30082080402	91	
30086913025	6000	30086081613	30086085317	30086082626	30082080404	99	
30086913026	6500	30086081614	30086085318	30086082627	30082080416	107	

货叉及货叉架(基本型/二级/三级全自由)
/ Fork & Fork carrier(normal/full 2-stage/3-stage mast)

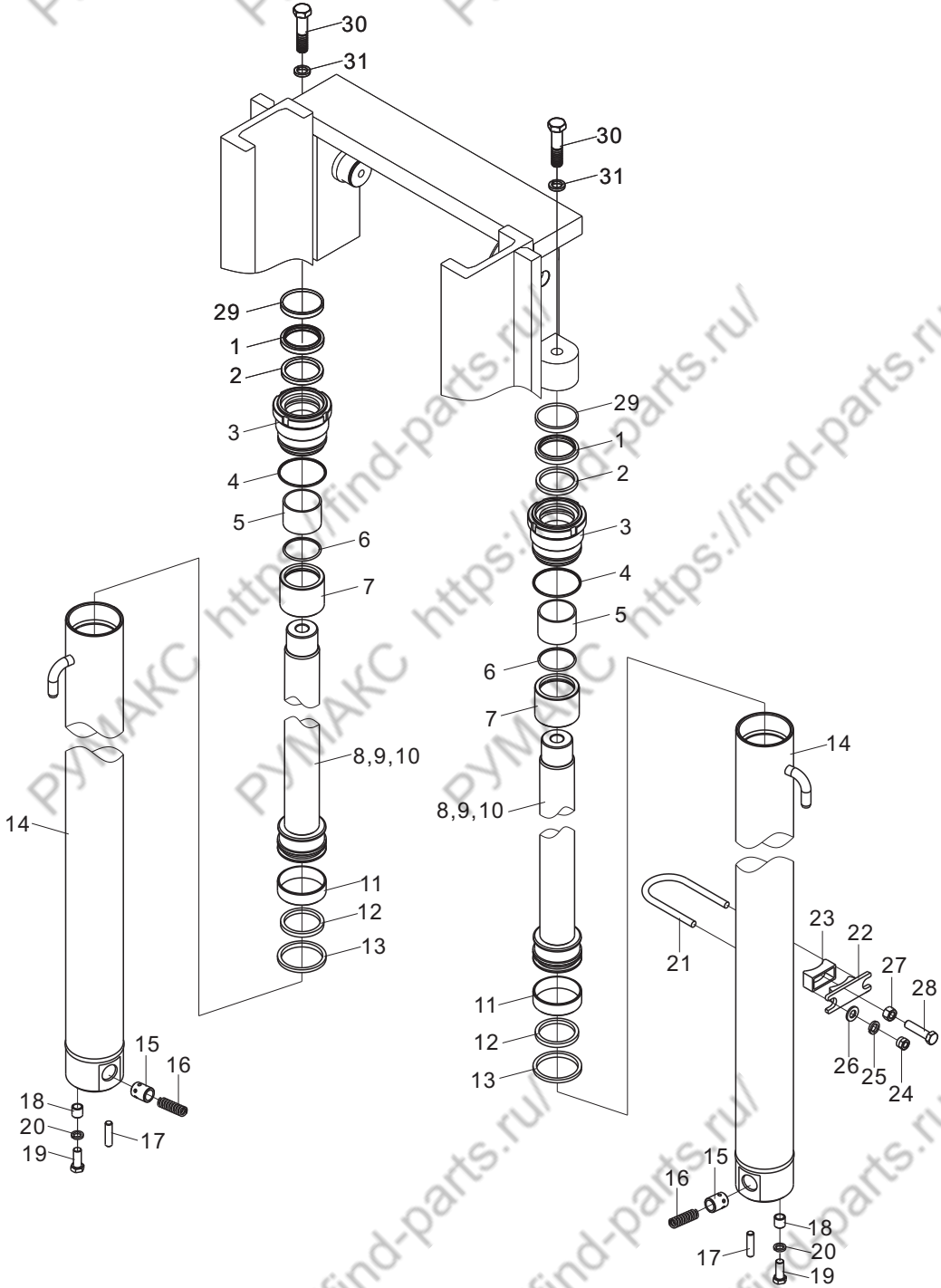
LG45D(T)、LG50DTQ



序号 Item No	货叉编码 Code, fork	货叉规格 Model, fork	备注 Remark
1	30086081208	1070×150×55	标准
2	30086081209	1220×150×55	
3	30086081210	1370×150×55	
4	30086081211	1520×150×55	
5	30086081212	1670×150×55	
6	30086081213	1820×150×55	
7	30086081214	1900×150×55	
8	30086081215	2000×150×55	

起升油缸(基本型) / Lift cylinder (normal mast)

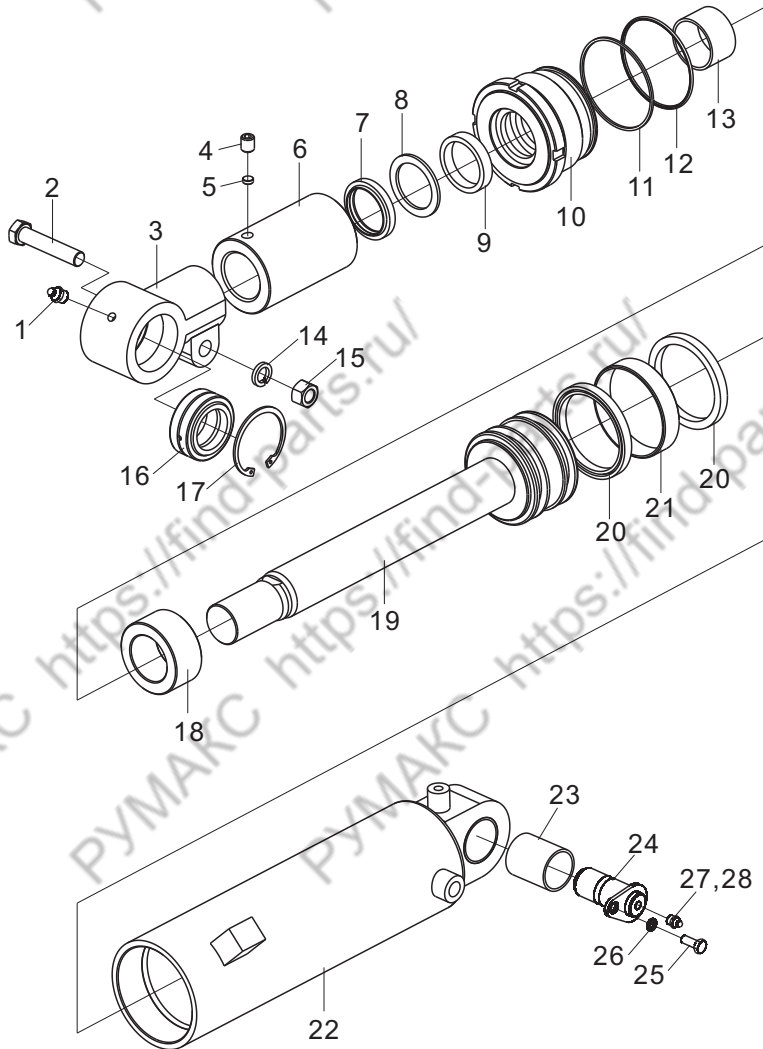
LG45D(T)、LG50DTQ



起升油缸(基本型) / Lift cylinder (normal mast)

序号 Item No	编 码 Code	图 号 Part No	零 部 件 名 称 Description	数量 Q'ty	备 注 Remark
A	16600145390	LG0045D.10.17	4. 5T3m起升油缸 Lift cylinder	2	
1	56193000501		防尘圈50X62X7 Dustproof ring 50×62×7	2	
2	56187006601		轴用密封圈50X60X7 Seal ring 50×60×7	2	
3	36600030231	LGG045SP300B-H-01	导向套 Guide sleeve	2	
4	56197000301	JISB2401	O形圈64. 4X3. 1 O-ring 64.4×3.1	2	
5	52500003101		钢背轴承50X55X40 Bearing 50×55×40	2	
6	36600072010	LGG045SP300H-04	间隔套 Spacer	2	高度≥4000用
7	56194010701	EKM	O形圈50X3 O-ring 50×3	2	高度<4000时无
8	36600041620	LGG045SP300H-03	活塞杆 Piston rod	2	
9	51466360119	GB/T895.1	挡圈42 Snap ring 42	2	
10	36600021140	LGG045SP300H-05	活塞 Piston	2	
11	56199009101		支承环65X70X20 Support ring 65×70×20	2	
12	56192015601		挡圈60X70X3 Snap ring 60×70×3	2	
13	56191001001		活塞密封圈70X60X7 Piston seal ring 70×60×7	2	
14	36600015351	LGG045SP300B-H.01	缸体 Cylinder body	2	
15	36600330010	LGG035SP300RH-07	滑阀 Spool	2	
16	36600191010	LGG035SP300RH-08	弹簧 Spring	2	
17	51515132002	GB/T119.1	圆柱销10X40 Cylindrical pin 10×40	2	
18	30082135101	LG0030D.10-009	轴套 Sleeve	2	
19	51207115314	GB/T5786	螺栓M12X1. 25X35 Bolt M12×1.25×35	2	
20	51401110107	GB/T93	垫圈12 Washer 12	2	
21	30086109601	LG0045D.10-007	卡箍 Clamp	2	
22	30082185000	LG0030D.10-012	箍座 Clamp seat	2	
23	30082113900	LG0030D.10-013	橡胶垫 Rubber pad	2	
24	51309000319	GB/T6171	螺母10X1. 25 Nut M10×1.25	4	
25	51401100107	GB/T93	垫圈10 Washer 10	4	
26	51421100115	GB/97.1	垫圈10 Washer 10	4	
27	51309000519	GB/T6171	螺母12X1. 25 Nut M12×1.25	2	
28	51207115614	GB/T5786	螺栓M12X1. 25X50 Bolt M12×1.25×50	2	
29	30086154800	LG0045DT.10-003	调整垫 Adjusting gasket	2	0.5mm
	30086154812	LG0045DT.10-003	调整垫 Adjusting gasket	2	1.0mm
	30086154813	LG0045DT.10-003	调整垫 Adjusting gasket	2	2.0mm
30	51204151814	GB/T5783	螺栓M20X60 Bolt M20×60	2	
31	51401150107	GB/T93	垫圈20 Washer 20	2	

倾斜油缸(基本/二级/三级全自由)
/Tilt cylinder (normal/2-stage/3-stage mast)



倾斜油缸参数/Tilt cylinder Parameter

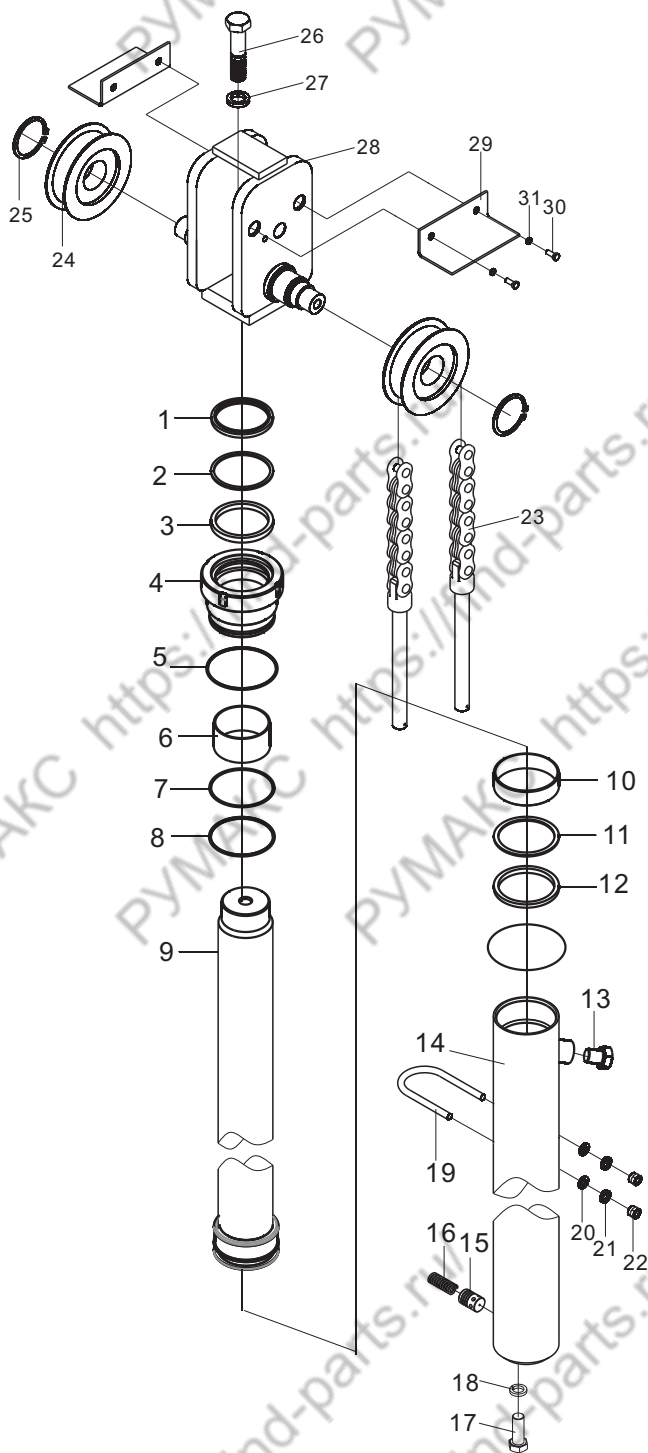
左缸 Left cylinder	右缸 Right cylinder	前/后倾角 Tilt angle	限位套 Limited spacer	间隔套 Spacer	备注 Remark
16600040100	16600040130	6°-12°	—	—	
16600040110	16600040140	6°-6°	36600073090	—	
16600040120	16600040150	3°-6°	36600073090	36600071160	
16600040180	16600040190	3°-3°	36600071420	36600071160	

倾斜油缸(基本/二级/三级全自由)
/Tilt cylinder (normal/2-stage/3-stage mast)

序号 Item No	编 码 Code	图 号 Part No	零 部 件 名 称 Description	数量 Q'ty	备 注 Remark
A	16600040100	LG0045D.10.19	4. 5T左倾斜油缸6° /12° Left tilt cylinder	1	
B	16600040130	LG0045D.10.20	4. 5T右倾斜油缸6° /12° Right tilt cylinder	1	
1	56201000501	JB/T7940.1	油杯PT1/8 Fitting grease	2	
2	51210120114	GB/T5785	螺栓M14X1. 5X70 Bolt M14×1.5×70	2	
3	36600241080	LGG045X6/12H-01	杆头 Rod head	2	
4	51106221707	GB/T77	螺钉M10X12 Screw M10×12	2	
5	36600321020	LGG030X6/12H-02	锁紧垫 φ8X3 Locking Gasket	2	6°/12°无
6	36600073090	LGG045X6/6H-02	限位套 Limited spacer	2	6°/12°无
7	56193001701		防尘圈45X57X7 Dustproof ring	2	
8	56192015201		挡圈45X60X3 Snap ring 45×60×3	2	
9	56187019801		轴用密封圈45X60X11 Seal ring 45×60×11	2	
10	36600031110	LGG045X6/12H-03	导向套 Guide sleeve	2	
11	56192016101		挡圈85. 4X90X2 Snap ring 85.4×90×2	2	
12	56909000101	JISB2402	O形圈84. 4X3. 1 O-ring 84.4×3.1	2	
13	52500002801		钢背轴承45X50X30 Bearing	2	
14	51401120107	GB/T93	垫圈14 Washer 14	2	
15	51309000619	GB/T6171	螺母M14X1. 5 Nut M14×1.5	2	
16	52126000101	GB/T9163	关节轴承GE40ES Joint bearing	2	
17	51452460107	GB/T893.2	挡圈62 Snap ring 62	2	
18	36600071160	LGG045X6/12H-04	间隔套 Spacer	2	
19	36600042060	LGG045X6/12H.02	活塞杆组件 Piston rod element	2	
20	56191002901		活塞密封圈90X75X10 Piston seal ring 90×75×10	4	
21	56199009201		支承环85X90X20 Pivot ring 85×90×20	2	
22A	36600017802	LGG045X6/12LH.01	左缸体 Left cylinder	1	
22B	36600017812	LGG045X6/12RH.01	右缸体 Right cylinder	1	
23	52500002901		钢背轴承40X44X45 Bearing	2	
24	30086025001	LG0045DT.10.07	销轴焊合 Pin shaft weldment	2	
25	51204101114	GB/T5783	螺栓M10X25 Bolt M10×25	2	
26	51401100107	GB/T93	垫圈10 Washer 10	2	
27	56201000301	JB/T7940.1	油杯M10X1 Oil cup	2	
28	60980005823	LG0030D.10-021	红色保护套 Red sheath	2	

前起升油缸(二级/三级全自由) /
Front lift cylinder (full free 2-stage/3-stage mast)

LG45D(T)、LG50DTQ



前起升油缸(二级/三级全自由) /
Front lift cylinder (full free 2-stage/3-stage mast)

序号 Item No	编 码 Code	图 号 Part No	零 部 件 名 称 Description	数量 Q'ty	备 注 Remark
A	16600225050	LGG045SS450FH	4. 5T3级4. 5m前起升油缸	Front lift cylinder	1
1	56193001201		防尘圈90×104×8	Dust ring	1
2	56192023101		挡圈90×105×3	Snap ring	1
3	56187045601		轴用密封圈90×105×11	Seal ring	1
4	36600030370	LGG045SS450FH-01	导向套	Guide sleeve	1
5	56908000501	JISB2401	O形圈114. 4×3. 1	O-ring	1
6	52500011701		钢背轴承90×95×50	Steel-backed bearing	1
7	56192107001		挡圈104×110×1. 27	Snap ring	1
8	56900020403	AS568	O形圈104. 37×3. 53	O-ring	1
9	36600046660	LGG045SS450FH.01	活塞杆组件	Piston rod	1
10	56199035001		支承环105×110×30	Support ring	1
11	56192013601		挡圈95×110×3	Snap ring	1
12	56191005401		活塞密封圈110×95×10	Piston seal ring	1
13	51204113614	GB/T5783	螺栓M12×10	Bolt	1
14	36600017300	LGG045SS450FH.02	缸体	Cylinder body	1
15	36600330010	LGG035SP300RH-07	滑阀	Slide valve	1
16	36600191010	LGG035SP300RH-08	弹簧	Spring	1
17	51207115314	GB/T5786	螺栓M12×1. 25×35	Bolt	1
18	51401110107	GB/T93	垫圈M12	Washer M12	1
19	30086109600	LG0045D.10A-001	卡箍	Clamp	1
20	51421100115	GB/97.1	垫圈10	Washer 10	2
21	51401100107	GB/T93	垫圈10	Washer 10	2
22	51309000319	GB/T6171	螺母10×1. 25	Nut	2
23	30082080417	LG0045D.10A.05	链条总成LH1634	Chain assemblyLH1634	2
24	30086185700	LG0040D.10-001	链轮782311	Chain wheel	2
25	51453420107	GB/T894.1	挡圈55	Snap ring	2
26	51204151814	GB/T5783	螺栓M20×60	Bolt M20×60	1
27	51401150107	GB/T93	垫圈20	Washer 20	1
28	30086079900	LG0045D.10A.04	缸头焊合	Cylinder head weldment	1
29	30082180208	LG0030D.10B-001	挡链板	Chain guide plate	2
30	51204091014	GB/T5783	螺栓M8×20	Bolt M8×20	4
31	51401090107	GB/T93	垫圈8	Washer 8	4

起升缸参数(二级) / Lift cylinder parameter(2-stage)

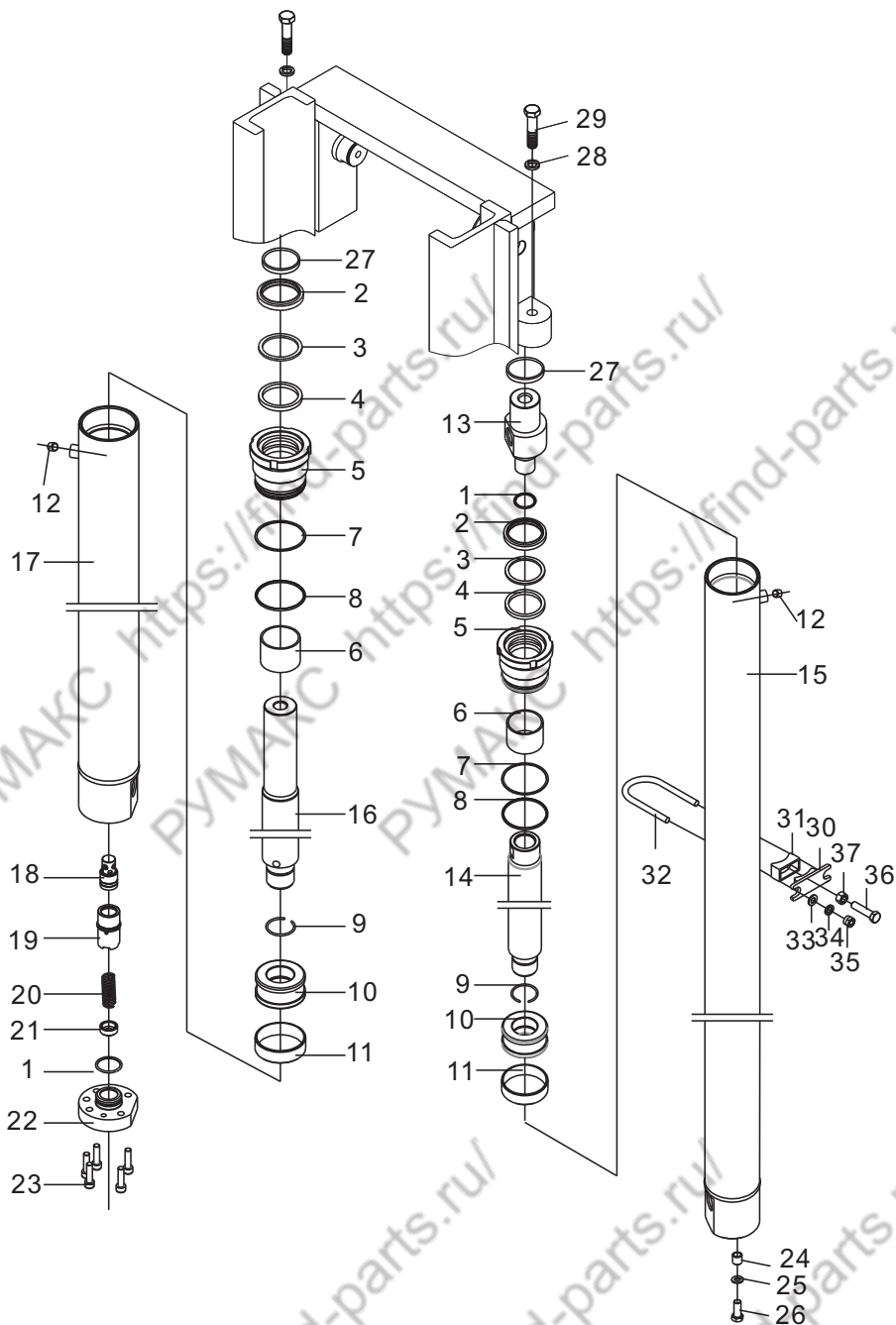
编码 Code	起升高度(二级) Lifting height	活塞杆 Postion rod	缸体 Cylinder body	链条编码 Chain code	节数 Pitch No.	备注 Remark
16600225010	2000	36600046620	36600017260	30082080423	55	
16600225020	2500	36600046630	36600017270	30082080417	63	
16600225120	2700	36600047260	36600018140	—	—	
16600225030	—	36600046640	36600017280	—	—	
16600225040	3000	36600046650	36600017290	30082080417	63	标准
16600225050	—	36600046660	36600017300	—	—	
16600225060	3300	36600046670	36600017310	30082080401	69	
16600225070	3500	36600046690	36600017320	30082080402	73	
16600225080	3750	36600046700	36600017330	30082080403	79	
16600225090	4000	36600046710	36600017340	30082080419	83	
16600225100	—	36600046720	36600017350	—	—	
16600225110	—	36600046730	36600017360	—	—	

起升缸参数(三级) / Lift cylinder parameter(3-stage)

编码 Code	起升高度(三级) Lifting height	活塞杆 Postion rod	缸体 Cylinder body	链条编码 Chain code	节数 Pitch No.	备注 Remark
16600225010	—	36600046620	36600017260	—	—	
16600225020	—	36600046630	36600017270	—	—	
16600225120	—	36600047260	36600018140	—	—	
16600225030	4000	36600046640	36600017280	30082080417	63	
16600225040	4350	36600046650	36600017290	30082080417	63	
16600225050	4500	36600046660	36600017300	30086080400	65	标准
16600225060	4800	36600046670	36600017310	30082080401	69	
16600225070	5000	36600046690	36600017320	30082080402	73	
16600225080	5400	36600046700	36600017330	30082080403	79	
16600225090	—	36600046710	36600017340	—	—	
16600225100	6000	36600046720	36600017350	30082080405	89	
16600225110	6500	36600046730	36600017360	30086080403	95	

后起升油缸(二级全自由) / Rear lift cylinder (full free 2-stage mast)

LG45D(T)、LG50DTQ

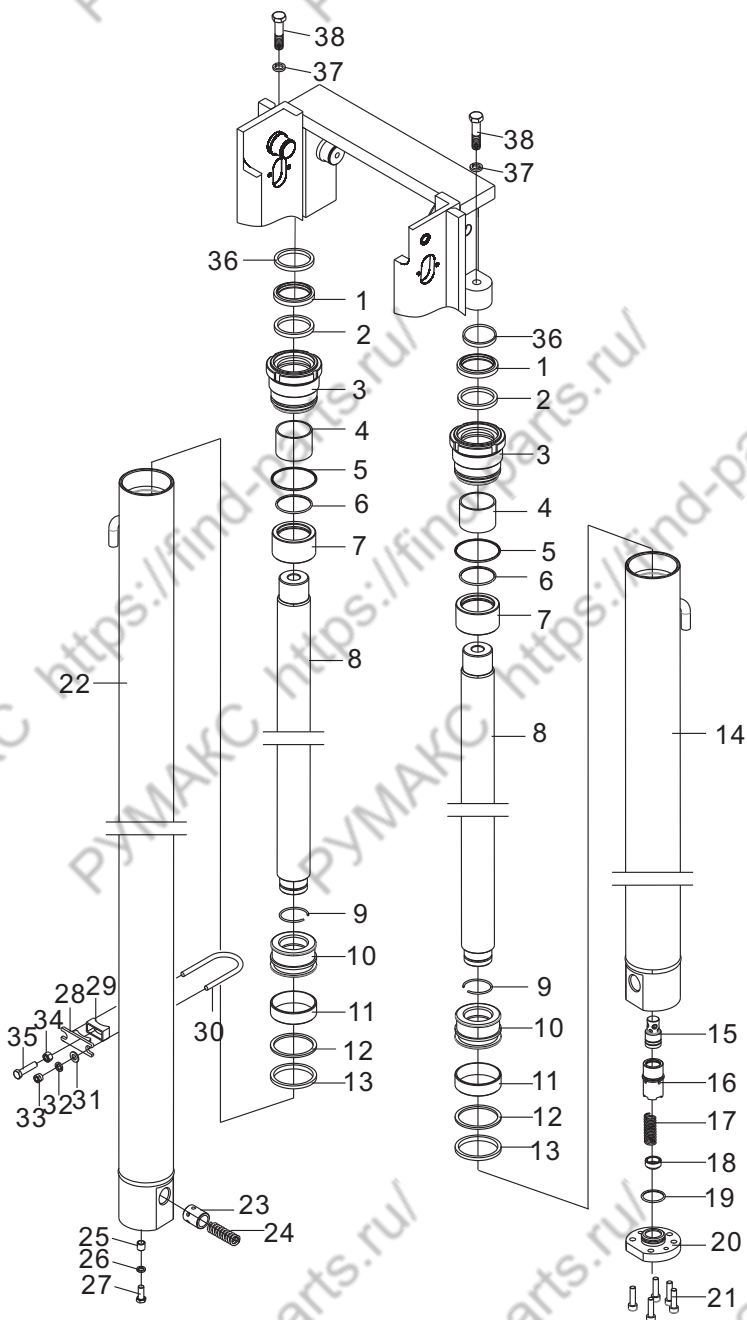


后起升油缸(二级全自由) / Rear lift cylinder (full free 2-stage mast)

序号 Item No	编 码 Code	图 号 Part No	零部件名称 Description		数量 Q'ty	备 注 Remark
A	16600145680	LGG045SL300LH	4. 5T2J全自由3m左后起升缸	Lift cylinder	1	
B	16600145750	LGG045SL300RH	4. 5T2J全自由3m右后起升缸	Lift cylinder	1	
1	56900011903	As568	0形圈28. 24×2. 62	O-ring 28.24×2.62	2	
2	56193000501		防尘圈50×62×7	Dust ring 50×62×7	2	
3	56192040901		挡圈50×60×3	Snap ring 50×60×3	2	
4	56187006601		轴用密封圈50×60×7	Seal ring50×60×7	2	
5	36600030380	LGG045SL300LH-02	导向套	Guide sleeve	2	
6	52500003101		钢背轴承50×55×40	Steel- backed bearing	2	
7	56192009001		挡圈65×70×1. 25	Snap ring 65×70×1.25	2	
8	56197000301	JISB2401	0形圈64. 4×3. 1	O-ring 64.4×3.1	2	
9	51466340119	GB/T895.1	挡圈38	Snap ring 38	2	
10	36600020410	LGG045SL300LH-03	活塞	Piston	2	
11	56199009101		支承环65×70×20	Pivot ring65×70×20	2	
12	56944000201	JB/ZQ4446	螺塞R1/4	Plug R1/4	2	
13	36600240230	LGG045SL300LH-01	拉杆头	Pull rod head	1	
14	36600046770	LGG045SL300LH.01	活塞杆	Piston rod	1	
15	36600017400	LGG045SL300LH.02	左缸体	Left cylinder	1	
16	36600046840	LGG045SL300RH.01	活塞杆	Pull rod	1	
17	36600017470	LGG045SL300RH.02	右缸体	Right cylinder	1	
18	36600340010	LGG015SH450FH-08	阀芯	Valve core	1	
19	36600200020	LGG015SH450FH-06	阀体	Valve body	1	
20	36600190030	LGG015SH450FH-05	弹簧	Spring	1	
21	36600280100	LGG015SH450FH-07	阀底	Valve bottom	1	
22	36600220060	LGG045SL300RH-02	法兰	Flange	1	
23	51139210606	GB/T70.1	螺钉M8×30	Screw M8×30	5	
24	30082135101	LG0030D.10-009	轴套	Sleeve	4	
25	51401110107	GB/T93	垫圈M12	Washer M12	4	
26	51207115314	GB/T5786	螺栓M12×1. 25×35	Bolt M12×1.25×35	4	
27	30086154800	LG0045DT.10-003	调整垫	Adjustment gasket	2	
28	51401150107	GB/T93	垫圈20	Washer 20	2	
29	51204151814	GB/T5783	螺栓M20×60	Bolt M20×60	2	
30	30082185000	LG0030D.10-012	箍座	Clamp seat	2	
31	30082113900	LG0030D.10-013	橡胶垫	Rubber gasket	2	
32	30086109601	LG0045D.10-007	卡箍	Clamp	2	
33	51421100115	GB/97.1	垫圈10	Washer 10	4	
34	51401100107	GB/T93	垫圈10	Washer 10	4	
35	51309000319	GB/T6171	螺母10×1. 25	Nut M10×1.25	4	
36	51207115614	GB/T5786	螺栓M12×1. 25×50	Bolt M12×1.25×50	2	
37	51309000519	GB/T6171	螺母12×1. 25	Nut M12×1.25	2	

后起升油缸(三级全自由) / Rear lift cylinder (full free 3-stage mast)

LG45D(T)、LG50DTQ

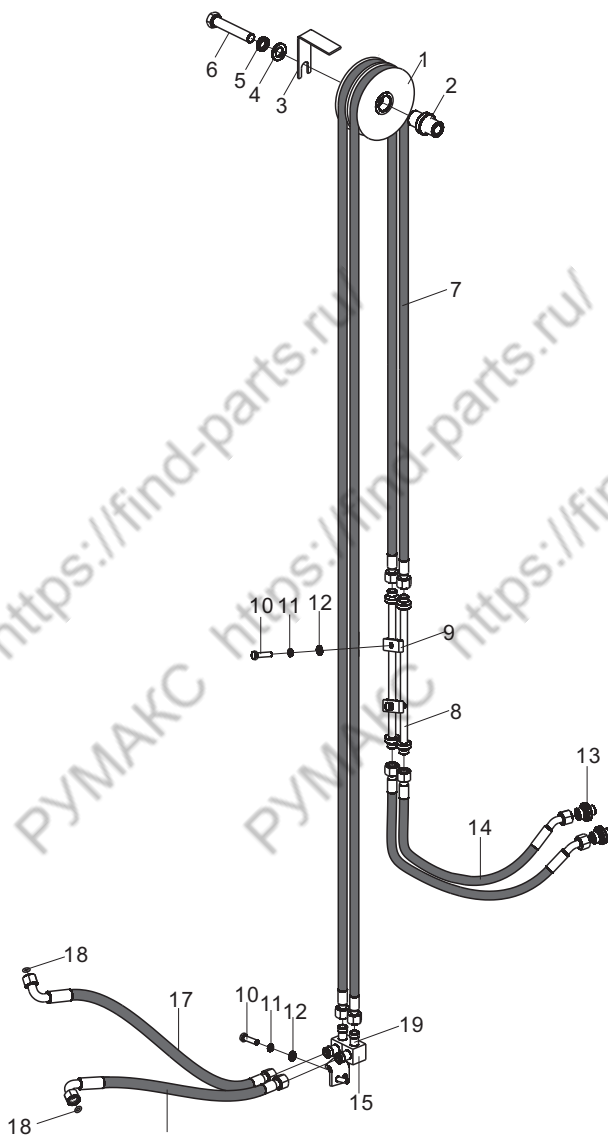


后起升油缸(三级全自由) / Rear lift cylinder (full free 3-stage mast)

序号 Item No	编 码 Code	图 号 Part No	零 部 件 名 称 Description	数量 Q'ty	备 注 Remark
A	16600145520	LGG045SS450LH	4. 5T3J全自由3m左后起升缸 Lift cylinder	2	
B	16600145600	LGG045SS450RH	4. 5T3J全自由3m右后起升缸 Lift cylinder	2	
1	56193000501		防尘圈50×62×7 Dust ring 50×62×7	2	
2	56187006601		轴用密封圈50×60×7 O-ring 28.24×2.62	2	
3	36600030231	LGG045SP300B-H-01	导向套 Guide sleeve	2	
4	52500003101		钢背轴承50×55×40 Steel- backed bearing	2	
5	56197000301	JISB2401	O形圈64.4×3.1 O-ring 64.4×3.1	2	
6	56900026903	AS568	O形圈50.47×2.62 O-ring 50.47×2.62	2	
7	36600070880	LGG045SS450H-02	间隔套 Spacer	2	
8	36600046560	LGG045SS450H-01	活塞杆 Piston rod	2	
9	51466360119	GB/T895.1	挡圈42 Snap ring 42	2	
10	36600021140	LGG045SP300H-05	活塞 Piston	2	
11	56199009101		支承环65×70×20 Pivot ring 65×70×20	2	
12	56192015601		挡圈60×70×3 Snap ring 60×70×3	2	
13	56191001001		活塞密封圈70×60×7 Seal ring 70×60×7	2	
14	36600017120	LGG045SS450LH.01	左缸体 Left cylinder	1	
15	36600340010	LGG015SH450FH-08	阀芯 Valve core	1	
16	36600200020	LGG015SH450FH-06	阀体 Valve body	1	
17	36600190030	LG015SH450FH-05	弹簧 Spring	1	
18	36600280100	LGG015SH450FH-07	阀底 Valve bottom	1	
19	56900003903	AS568	O形圈31.42×2.62 O-ring 31.42×2.62	1	
20	36600220050	LGG045SS450LH-02	法兰 Flange	1	
21	51139210405	GB/T70.1	螺钉M8×20 Screw M8×30	5	
22	36600017200	LGG045SS450RH.01	右缸体 Right cylinder	1	
23	36600330010	LGG035SP300RH-07	滑阀 Slide valve	1	
24	36600191010	LGG035SP300RH-08	弹簧 Spring	1	
25	30082135101	LG0030D.10-009	轴套 Bushing	4	
26	51401110107	GB/T93	垫圈12 Washer M12	4	
27	51207115314	GB/T5786	螺栓M12×1.25×35 Bolt M12×1.25×35	4	
28	30082185000	LG0030D.10-012	箍座 Clamp seat	2	
29	30082113900	LG0030D.10-013	橡胶垫 Rubber gasket	2	
30	30086109601	LG0045D.10-007	卡箍 Clamp	2	
31	51421100115	GB/T97.1	垫圈10 Washer 10	4	
32	51401100107	GB/T93	垫圈10 Washer 10	4	
33	51309000319	GB/T6171	螺母10×1.25 Nut M10×1.25	4	
34	51207115614	GB/T5786	螺栓M12×1.25×50 Bolt M12×1.25×50	2	
35	51309000519	GB/T6171	螺母12×1.25 Nut M12×1.25	2	
36	30086154800	LG0045DT.10-003	调整垫 Adjustment gasket	2	
37	51401150107	GB/T93	垫圈20 Washer 20	2	
38	51204151814	GB/T5783	螺栓M20×60 Bolt M20×60	2	

门架侧移管路系统(基本型) / Sideshift pipe system mast(normal mast)

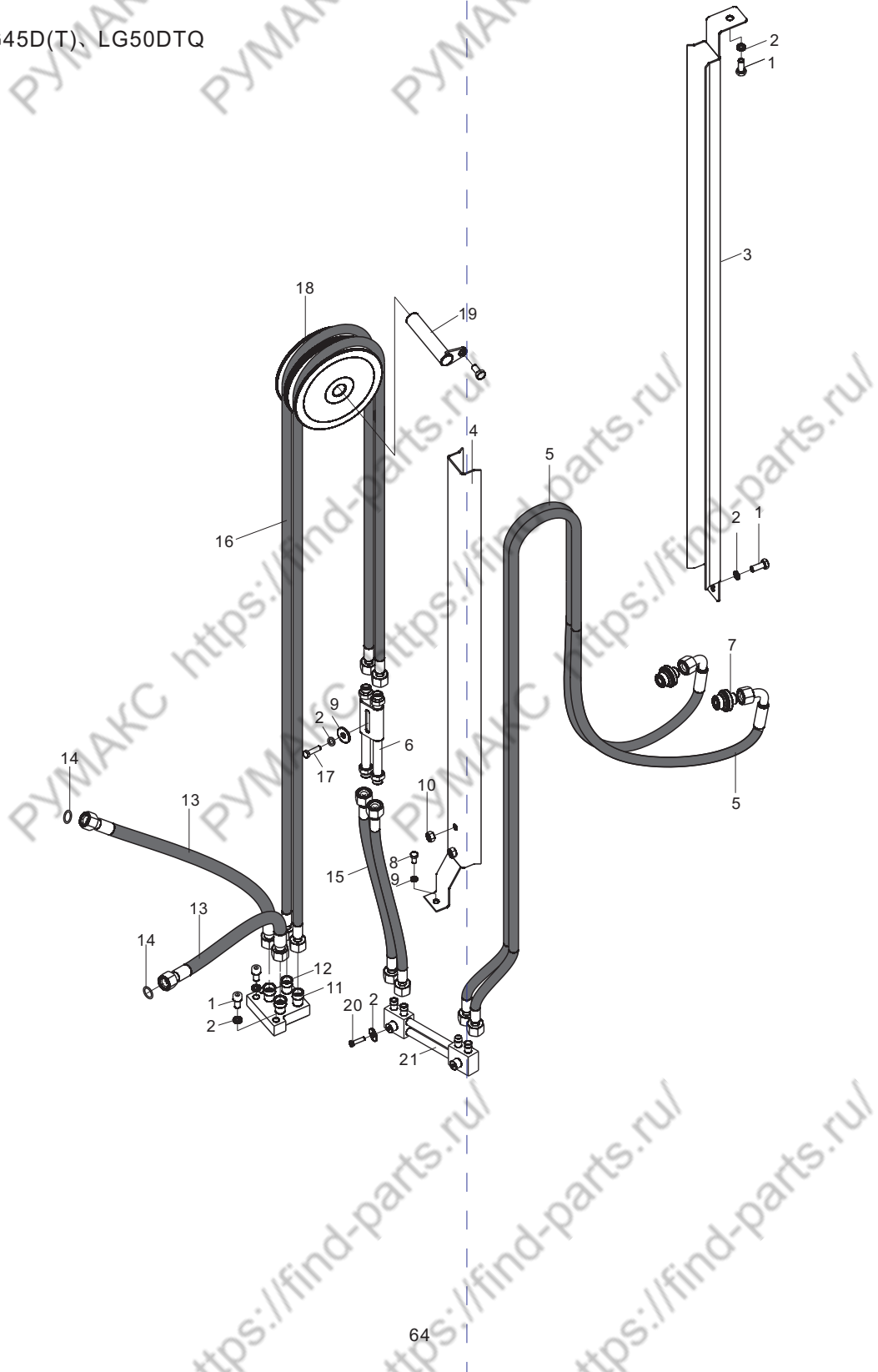
LG45D(T)、LG50DTQ



高度 Lifting height	3600	4000	4350	4500	4800	5000	5400
序号7胶管 Hose, NO.8	17272010332	17272009180	17272010334	17272009174	17272011103	17272011122	17272008639
高度 Lifting height	6000	6300	6500	7000			
序号7胶管 Hose, NO.8	17272009641	17272009175	17272010169	17272008643			
备注 Remark							

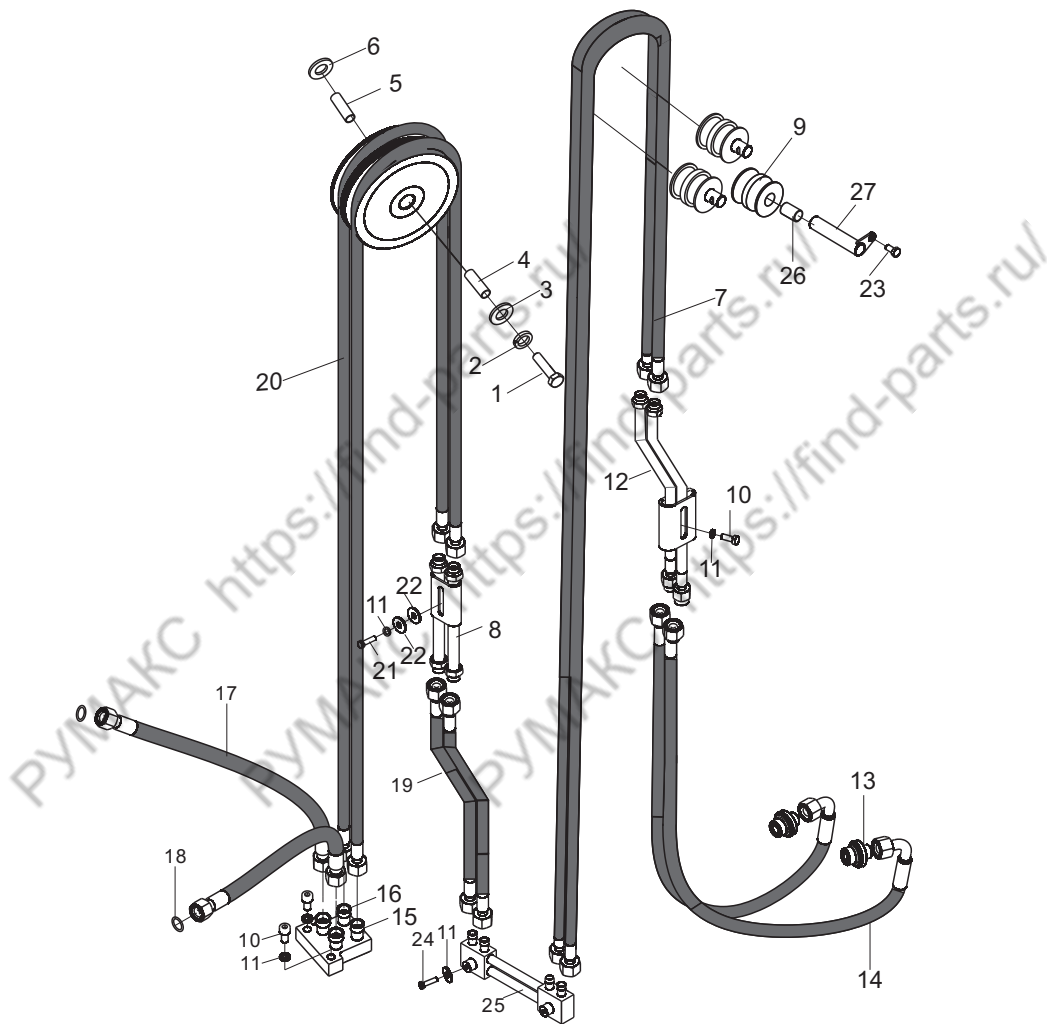
门架侧移管路系统(二级全自由) / Side shifting pipe system mast(full free 2-stage mast)

LG45D(T)、LG50DTQ



门架侧移管路系统(三级全自由) / Side shifting pipe system mast(full free 3-stage mast)

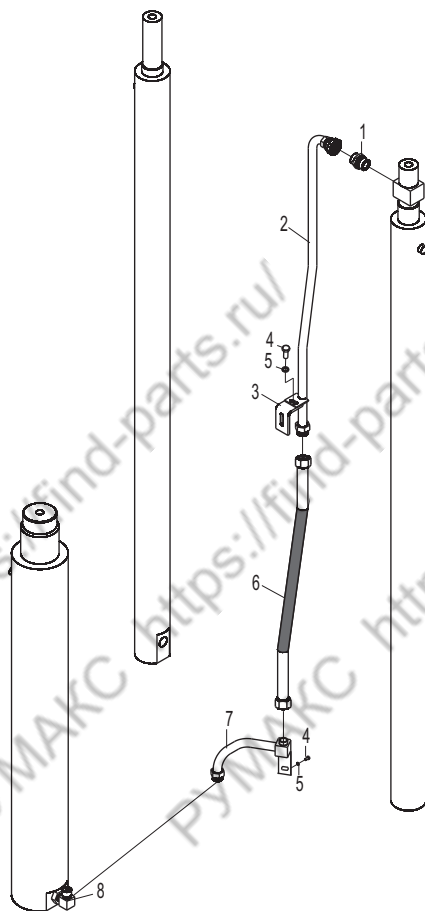
LG45D(T)、LG50DTQ



高度 Lifting height	4000	4350	4500	4800	5000	5400	6000	6500
序号9胶管 Hose, NO.9	17272009173	17272009174	17272008635	17272008636	17272008637	17272009179	17272009175	17272009176
序号20胶管 Hose NO.20	17272009119	17272009119	17272009178	17272009120	17272009121	17272009122	17272009180	17272009173
高度 Lifting height	2000	2500	3000	3300	3500	3750	4000	
序号19胶管 Hose, NO.19	17272009134		17272009133					

门架起升管路系统(二级全自由) / Lift pipe system mast (full free 2-stage mast)

LG45D(T)、LG50DTQ

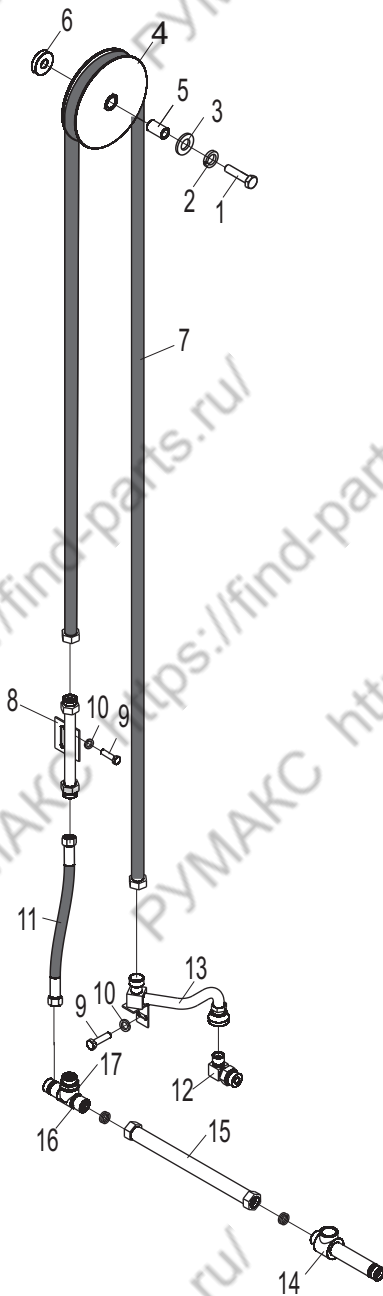


门架起升管路系统(二级全自由) / Lift pipe system mast (full free 2-stage mast)

序号 Item No	编 码 Code	图 号 Part No	零 部 件 名 称 Description	数 量 Q'ty	备 注 Remark
1	17601000254	LG0045D.10A.09.04	接头 Connector	1	
2	30086013323	LG0045D.10A.09.01	钢管总成 Steel tube assembly	1	
7	30086013320	LG0045D.10A.09.03	钢管总成 Steel tube assembly	1	
3	30086107630	LG0045D.10A.09.001	固定板 Fixed plate	1	
4	51204091014	GB/T5783	螺栓M8X20 Blot M8×20	3	
5	51401090107	GB/T93	垫圈8 Spring lock washer 8	3	
6	17272009132	LG0045D.10A.09.02	胶管总成 Hose assembly	1	
8	17601000306	LG0030D.10A.01.03	过渡接头 Transition connector	1	

门架起升管路系统(三级全自由) / Lift pipe system mast (full free 3-stage mast)

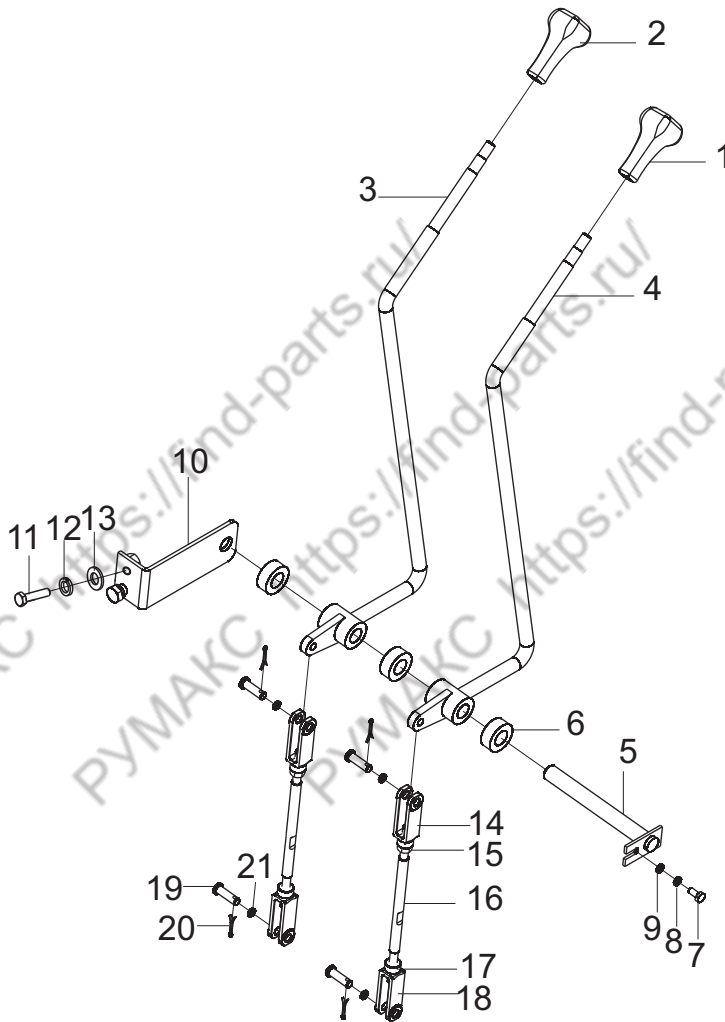
LG45D(T)、LG50DTQ



高度 Lifting height	4000	4350	4500	4800	5000	5400	6000	6500
序号7胶管 Hose, NO.7	17272009163	17272009164	17272009165	17272009166	17272009167	17272009168	17272009169	17272009170

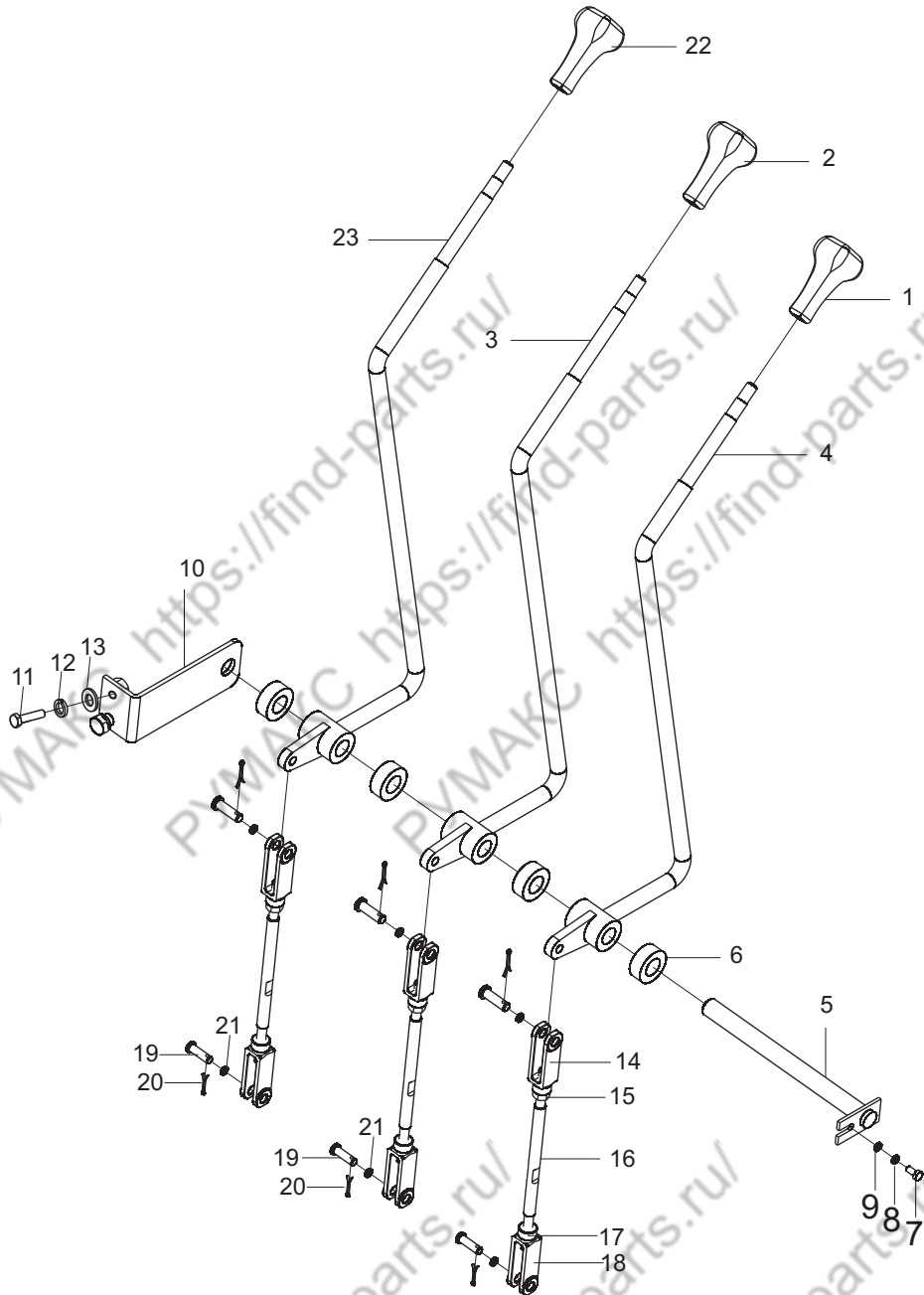
多路阀操纵(两联)/Multi-way valve control (two-throw)

LG45D(T)、LG50DTQ



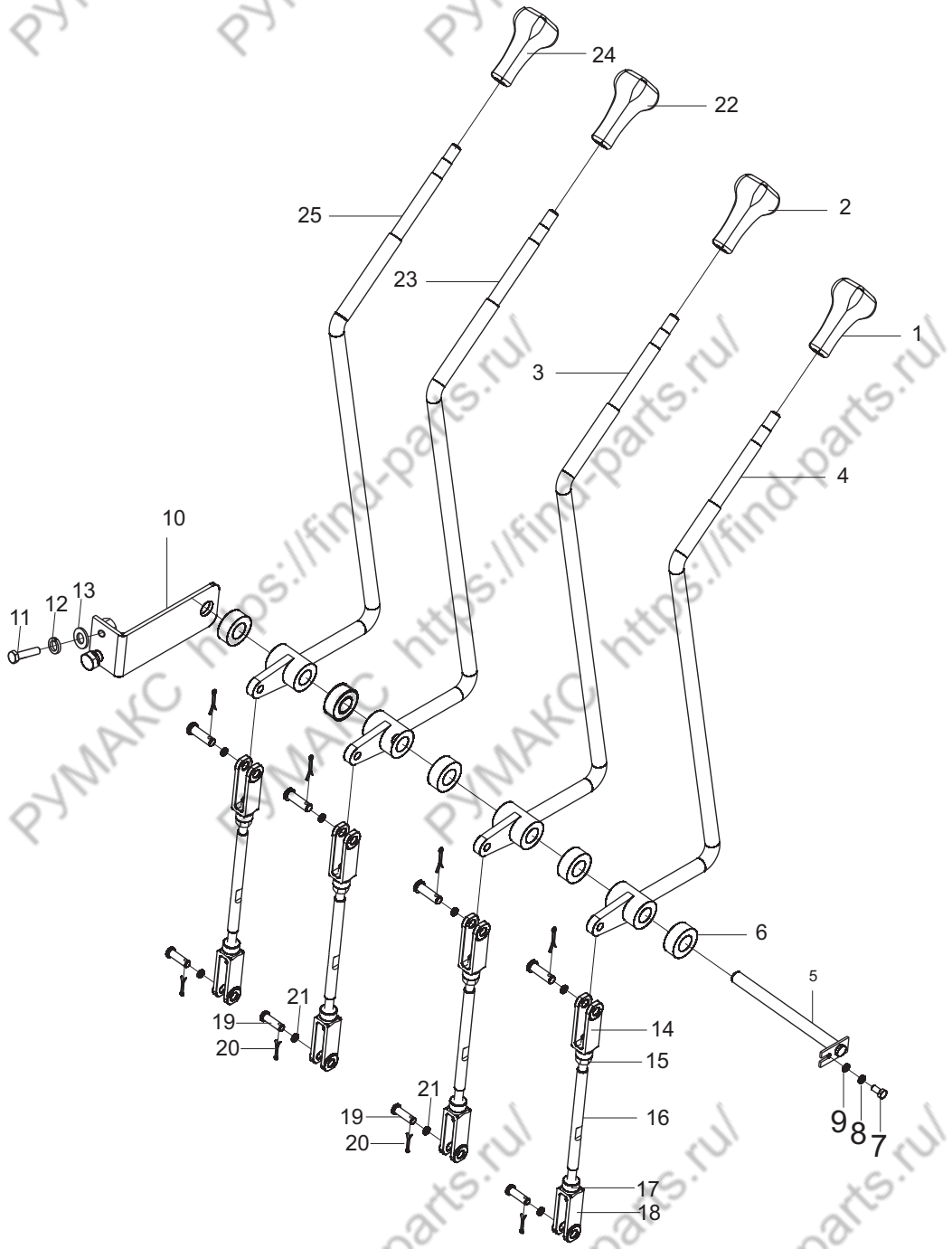
多路阀操纵(三联)/Multi-way valve control (three-throw)

LG45D(T)、LG50DTQ



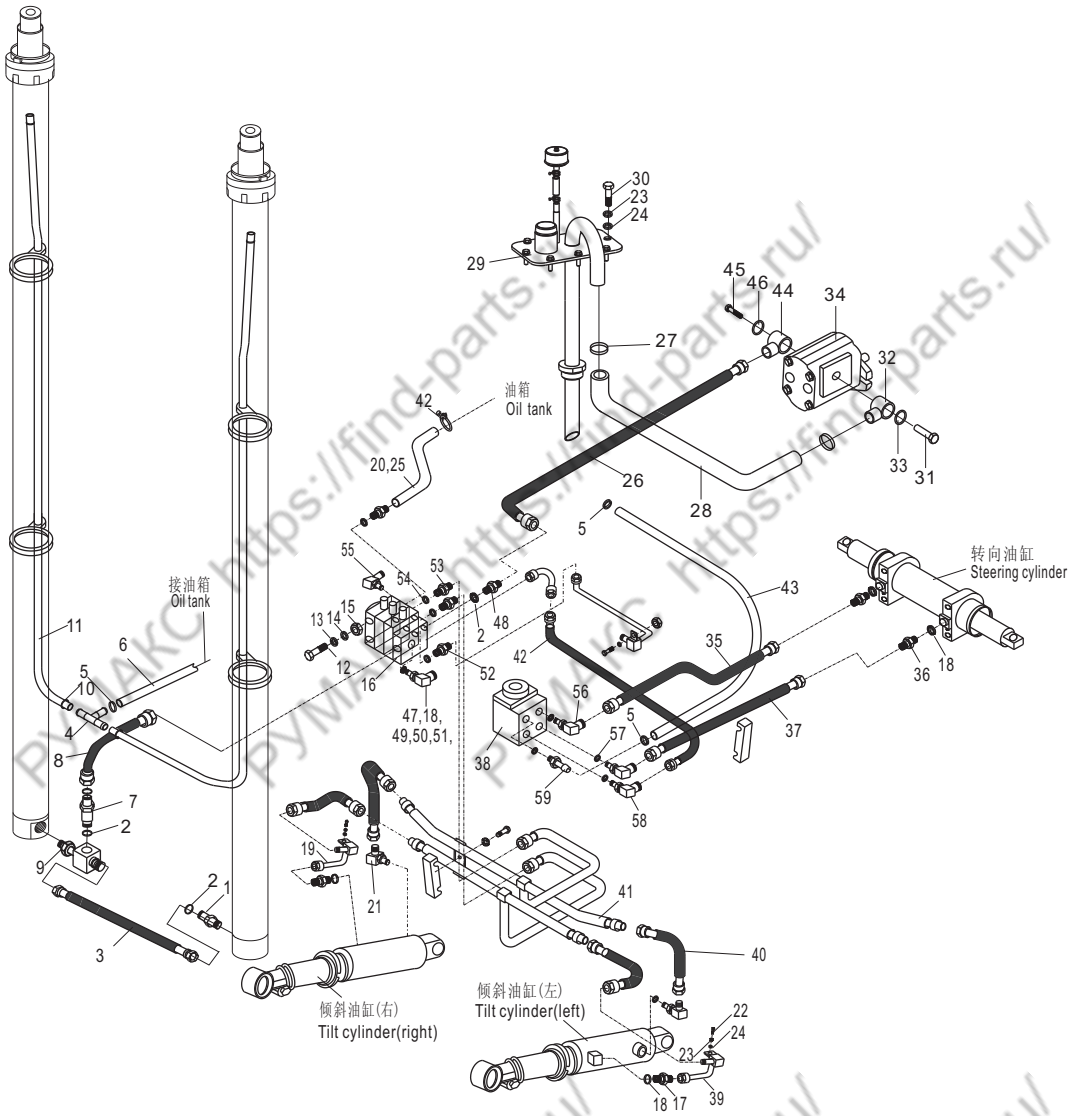
多路阀操纵(四联)/Multi-way valve control (Four-throw)

LG45D(T)、LG50DTQ



液压系统/Hydraulic system

LG45D

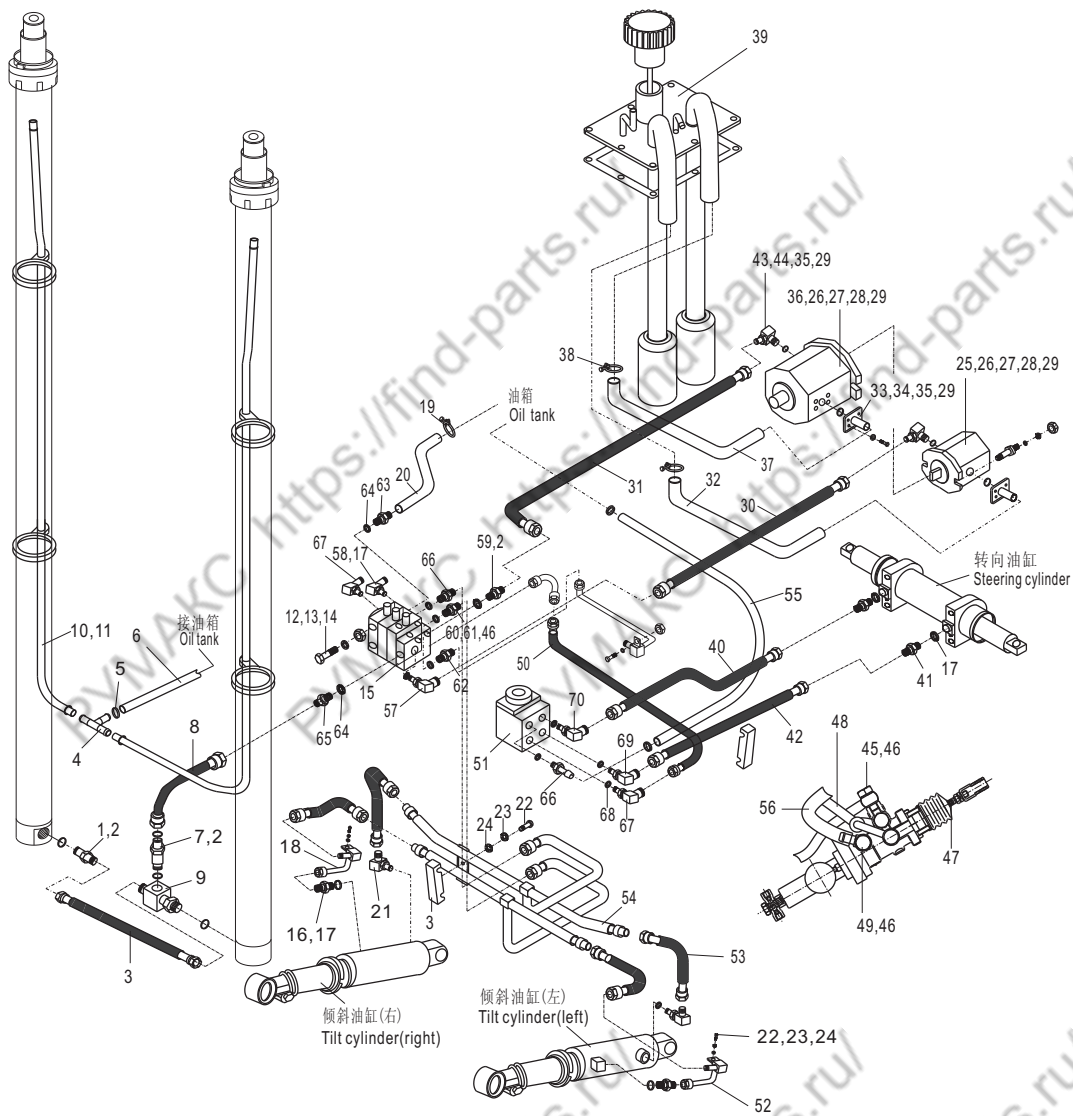


液压系统/Hydraulic system

序号 Item No	编 码 Code	图 号 Part No	零 部 件 名 称 Description	数量 Q'ty	备 注 Remark
1	30012108305	LG0045DT.12-037	过渡接头 Transition connector	1	
2	56145006701	GB/T3452.1	O形圈23.6×3.55 O-ring 23.6×3.55	3	
3	17272007478	LG0045DT.12-038	胶管总成 Hose assembly	1	
4	30012112002	LG0030D.12-003	三通接头 Three way connector	1	
5	56171000301	JB/T8870	喉箍d32(20~32) Hoop d32(20~32)	4	
6	30012187917	LG0045DT.12-039	回油管 Oil return pipe	1	
7	60304000513	LG0045DT.12.11	限速阀 Speed limiting valve	1	
8	17272002948	LG0045DT.12-017	胶管总成 Hose assembly	1	
9	30012072000	LG0045DT.12.39	三通接头总成 Three way connector	1	
10	56171001301	JB/T8870	喉箍d20(12~20) Hoop d20(12~20)	4	
11	30012187916	LG0045DT.12-003	回油管 Oil return pipe	2	
12	51204111614	GB/T5783	螺栓M12×50 Bolt M12×50	4	
13	51421110115	GB/T97.1	垫圈12 Spring lock washer 12	4	
14	51401110107	GB/T93	垫圈12 Plain washer 12	4	
15	51307001119	GB/T6170	螺母M12 Nut M12	4	
16	60304000548	LG0045D.12.07	多路阀 Multi-way valve	1	
17	17601000454	LG0060DT.12-025	过渡接头 Transition connector	2	
18	56145004001	GB/T3452.1	O形圈13.2×2.65 O-ring 13.2×2.65	5	
19	30012013303	LG0045DT.12.40	钢管总成 Steel tube weldment	1	
20	30012106004	LG0045D.12-010	成型管 Molding pipe	1	
21	30012008300	LG0045DT.12.41	过渡接头 Transition connector	2	
22	51204090914	GB/T5783	螺栓M8×16 Bolt M8×16	4	
23	51401090107	GB/T93	垫圈8 Spring lock washer 8	14	
24	51421090115	GB/T97.1	垫圈8 Plain washer 8	14	
25	68080000005	LG0100DT.12-020	扎带8×350 Binding tape 8×350	6	
26	17272009819	LG0045D.12-015	胶管总成 Hose assembly	1	
27	56171000601	JB/T8870	喉箍d50(32~50) Hoop d44(32~50)	4	
28	30012171017	LG0045D.12-011	成型管 Molding pipe	1	
29	30012073010	LG0045D.12.08	液压油箱盖板总成 Oil tank cover plate	1	
30	51204091014	GB/T5783	螺栓M8×20 Bolt M8×20	10	
31	60909010065	LG0030D.12-013	铰接螺栓 Hinged bolt	1	
32	30012071601	LG0030D.12.05	铰接头焊合 Hinged connector weldment	1	
33	56145009501	GB/T3452.1	O形圈35.5×3.55 O-ring 35.5×3.55	2	
34	60301100058	LG0040D.12.04	齿轮泵 Gear pump	1	
35	17272002254	LG0045DT.12-012	胶管总成 Hose assembly	1	
36	30012108306	LG0045DT.12-045	过渡接头 Transition connector	2	

液压系统/Hydraulic system

LG45DT、LG50DTQ



液压系统/Hydraulic system

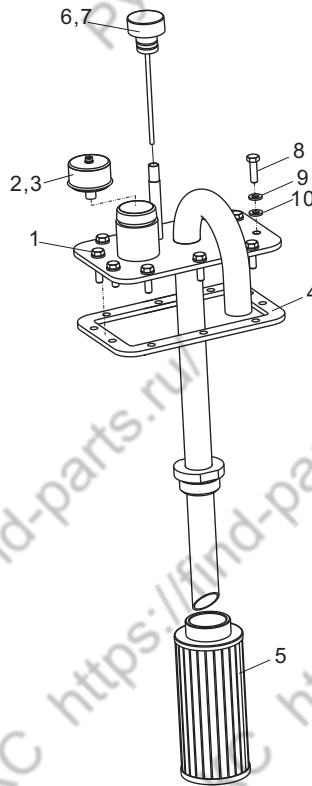
序号 Item No	编 码 Code	图 号 Part No	零 部 件 名 称 Description	数量 Q'ty	备 注 Remark
1	30012108305	LG0045DT.12-037	过渡接头 Transition connector	1	
2	56145006701	GB/T3452.1	O形圈23.6×3.55 O-ring 23.6×3.55	3	
3	17272007478	LG0045DT.12-038	胶管总成 Hose assembly	1	
4	30012112002	LG0030D.12-003	三通接头 T-connector	1	
5	56171000301	JB/T8870	喉箍d32(20~32) Hoop d32(20~32)	4	
6	30012187917	LG0045DT.12-039	回油管 Oil return pipe	1	
7	60304000513	LG0045DT.12.11	限速阀 Speed limited Valve	1	
8	17272002948	LG0045DT.12-017	胶管总成 Hose assembly	1	
9	30012072000	LG0045DT.12.39	三通接头总成 T-connector	1	
10	56171001301	JB/T8870	喉箍d20(12~20) Hoop d20(12~20)	4	
11	30012187916	LG0045DT.12-003	回油管 Oil return pipe	2	
12	51204111614	GB/T5783	螺栓M12×50 Bolt M12×50	4	
13	51401110107	GB/T93	垫圈12 Spring lock washer 12	4	
14	51307001119	GB/T6170	螺母M12 Nut M12	4	
15	60304100023	LG0060DT.12.05	多路阀 Multi-way valve	1	
16	17601000454	LG0060DT.12-025	过渡接头 Transition connector	2	
17	56145004001	GB/T3452.1	O形圈13.2×2.65 O-ring 13.2×2.65	5	
18	30012013303	LG0045DT.12.40	钢管总成 Steel tube weldment	1	
19	56171000601	JB/T8870	喉箍d51(35~51) Hoop d51(35~51)	6	
20	30012106000	LG0045DT.12-040	成型管 Molding pipe	1	
21	30012008300	LG0045DT.12.41	过渡接头 Transition connector	2	
22	51204090914	GB/T5783	螺栓M8×16 Bolt M8×16	4	
23	51401090107	GB/T93	垫圈8 Spring lock washer 8	14	
24	51421090115	GB/T97.1	垫圈8 Plain washer 8	14	
25	60301000197	LG0045DT.12.42	齿轮泵 Gear pump	1	
26	30012134905	LG0045DT.12-031	纸垫 Paper gasket	2	
27	51207105314	GB/T5786	螺栓M10×1.25×35 Bolt M10×1.25×35	4	
28	51421100115	GB/T97.1	垫圈10 Plain washer 10	5	
29	51401100107	GB/T93	垫圈10 Spring lock washer 10	21	
30	17272007605	LG0045DT.12-041	胶管总成 Hose assembly	1	
31	17272007475	LG0045DT.12-042	胶管总成 Hose assembly	1	
32	30012106001	LG0045DT.12-043	成型管 Molding pipe	1	
33	30012074100	LG0045DT.12.43	法兰接头焊接 Flange connector weldment	2	
34	56145008201	GB/T3452.1	O形圈30×2.65 O-ring 30×2.65	2	
35	51139220405	GB/T70.1	螺钉M10×30 Screw M10×30	16	
36	60301000198	LG0045DT.12.44	齿轮泵 Gear pump	1	

液压系统/Hydraulic system

序号 Item No	编 码 Code	图 号 Part No	零 部 件 名 称 Description	数量 Q'ty	备 注 Remark
37	30012106003	LG0045DT.12-044	成型管 Molding pipe	1	
38	30012073004	LG0045DT.12.08	喉箍d44 (32~44) Hoop	4	
39	51204091014	GB/T5783	液压油箱盖板总成 Oil tank cover plate	1	
40	17272002254	LG0045DT.12-012	胶管总成 Hose assembly	1	
41	30012108306	LG0045DT.12-045	过渡接头 Transition connector	2	
42	17272002253	LG0045DT.12-011	胶管总成 Hose assembly	1	
43	30012170400	LG0045DT.12.45	法兰接头 Flange connector	2	
44	56145007001	GB/T3452.1	O形圈25×2.65 O-ring 25×2.65	2	
45	30012109400	LG0045DT.12-046	铰接螺栓 Hinged bolt	2	
46	56147010401	JB/T982	组合垫圈16 Combination washer 16	8	
47	17272007476	LG0045DT.12-047	胶管总成 Hose assembly	1	
48	60909010069	LG0045DT.12-020	铰接螺栓 Hinged bolt	1	
49	30012071603	LG0045DT.12.46	铰接接头焊合 Hinged connector weldment	1	
50	17272007477	LG0045DT.12-048	胶管总成 Hose assembly	1	
51	60304000511	LG0045DT.12.20	转向器 Steering gear	1	
52	30012013304	LG0045DT.12.47	钢管总成 Steel tube assembly	1	
53	17272006791	LG0045DT.12-056	胶管总成 Steel tube assembly	4	
54	30012013305	LG0045DT.12.48	钢管总成 Steel tube assembly	1	
55	30012187918	LG0045DT.12-049	回油管 Oil return pipe	1	
56	30012187920	LG0045DT.12-050	回油管 Oil return pipe	1	
57	30012008301	LG0045DT.12.49	过渡接头 Transition connector	1	
58	60304000512	LG0045DT.12.50	单向阀 Check valve	1	
59	30012108307	LG0045DT.12-051	过渡接头 Transition valve	1	
60	30012109401	LG0045DT.12-052	铰接螺栓 Hinged bolt	1	
61	30012071602	LG0045DT.12.51	铰接接头焊合 Hinged connector weldment	1	
62	30012008302	LG0045DT.12.52	过渡接头 Transition connector	1	
63	30012108308	LG0045DT.12-053	过渡接头 Transition connector	2	
64	56145007601	GB/T3452.1	O形圈26.5×2.65 O-ring 26.5×2.65	2	
65	17601001614	LG0045DT.12.53	过渡接头 Transition connector	1	
66	17601000516	LG0045DT.12-013	过渡接头 Transition connector	1	
67	30012108309	LG0045DT.12-054	过渡接头 Transition connector	1	
68	56145004805	GB/T3452.1	O形圈17×2.65 O-ring 17×2.65	1	
69	30012008303	LG0045DT.12.54	过渡接头 Transition connector	1	
70	30012008304	LG0045DT.12.55	过渡接头 Transition connector	1	

液压油箱盖板总成 / Hydraulic oil tank cover plate

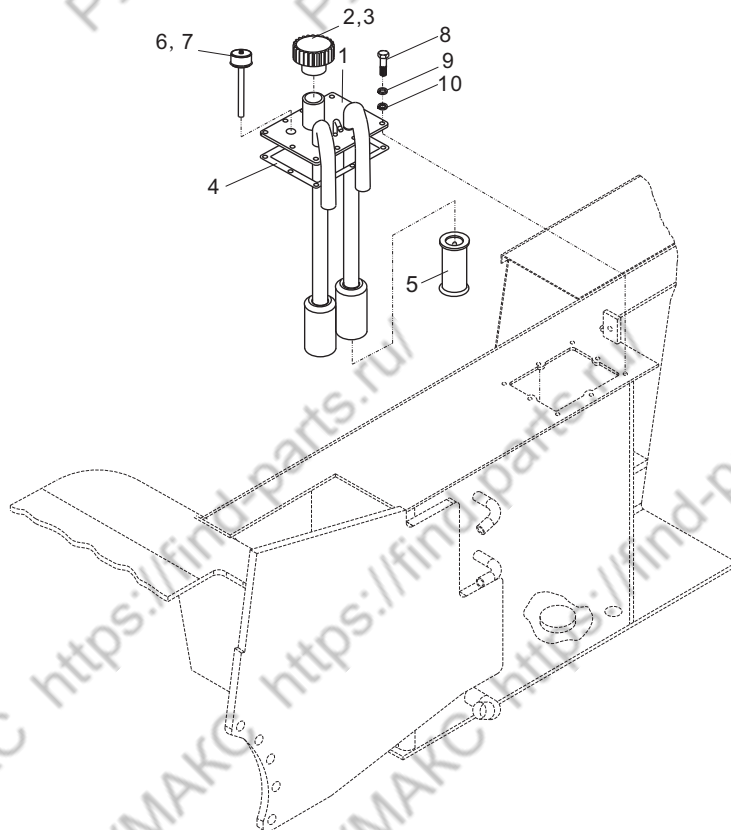
LG45D



序号 Item No	编 码 Code	图 号 Part No	零部件名称 Description	数量 Q'ty	备 注 Remark
1	30012072819	LG0045D.12.08.01	液压油箱盖板焊合 Cover plate weldment	1	
2	30012071503	LG0045DT.12.08.03	呼吸器总成 Breather assembly	1	
3	51158170404	GB/T818	螺钉M5×12 Screw M5×12	4	
4	30001111505	LG0045DT.01.05-002	密封垫 Seal gasket	1	
5	30012015102	LG0060DT.12.11.04	滤油器总成 Oil filter assembly	2	
6	30012073301	LG0045DT.12.08.02	油尺焊合 Oil dipstick weldment	1	
7	56145003501	GB/T3452.1	O形圈11.8×2.65 O-ring 11.8×2.65	1	
8	51204091014	GB/T5783	螺栓M8×20 Bolt M8×20	10	
9	51401090107	GB/T93	垫圈8 Washer 8	10	
10	51421090115	GB/T97.1	垫圈8 Washer 8	10	

液压油箱盖板总成/Hydraulic oil tank cover plate

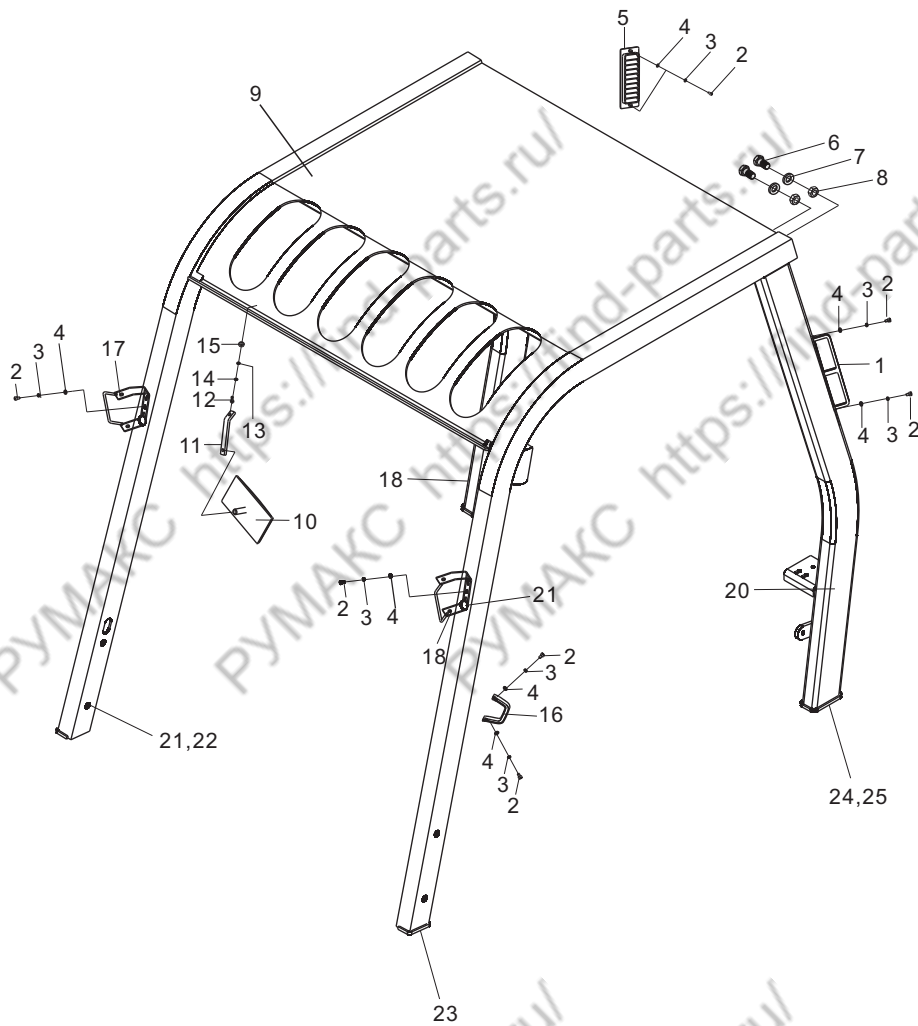
LG45DT、LG50DTQ



序号 Item No	编 码 Code	图 号 Part No	零 部 件 名 称 Description	数 量 Q'ty	备 注 Remark
1	30012072813	LG0045DT.12.08.05	液压油箱盖板焊合 Cover plate	1	
2	30012071503	LG0045DT.12.08.03	呼吸器总成 Breather assembly	1	
3	51158170404	GB/T818	螺钉M5×12 Screw M5×12	4	
4	30001111505	LG0045DT.01.05-002	密封垫 Seal gasket	1	
5	30012015102	LG0060DT.12.11.04	滤油器总成 Oil filter assembly	2	
6	30012073301	LG0045DT.12.08.02	油尺焊合 Oil dipstick weldment	1	
7	56145003501	GB/T3452.1	O形圈11.8×2.65 O-ring 11.8×2.65	1	
8	51204091014	GB/T5783	螺栓M8×20 Bolt M8×20	10	
9	51401090107	GB/T93	垫圈8 Washer 8	10	
10	51421090115	GB/T97.1	垫圈8 Washer 8	10	

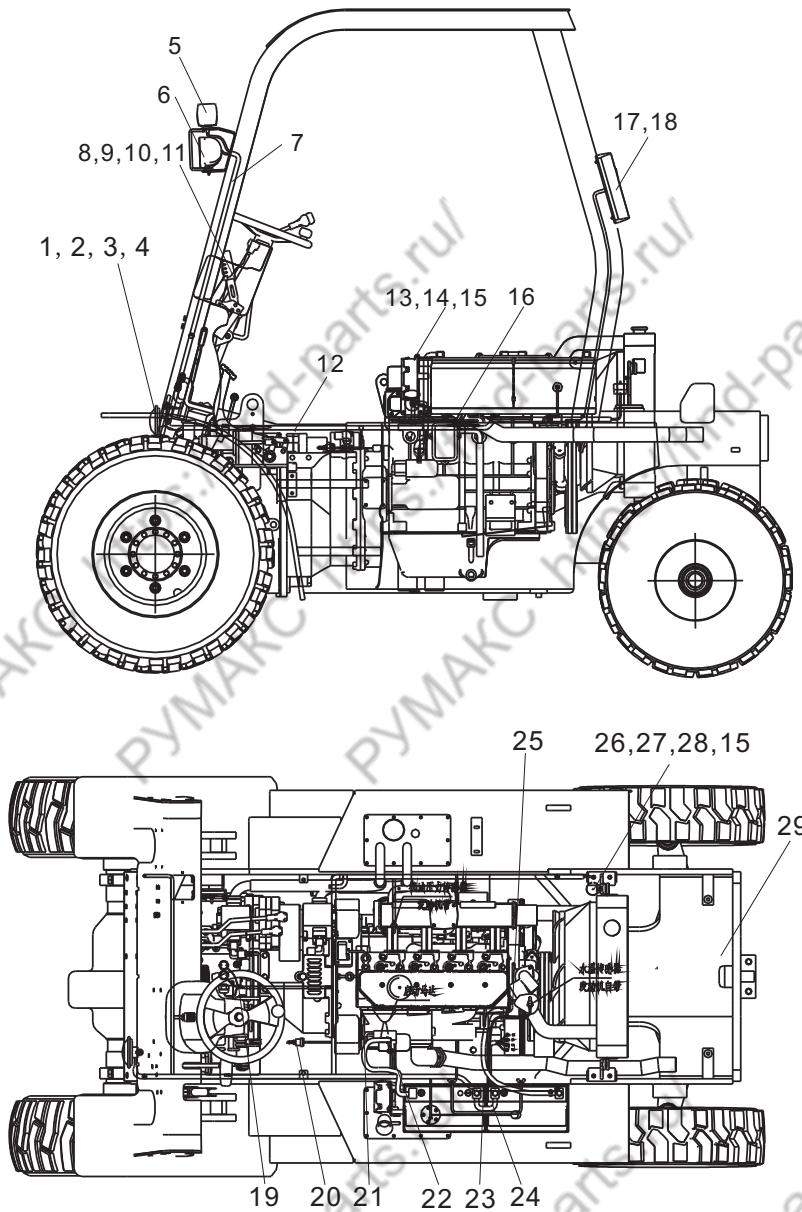
护顶架/Overhead guard

LG45D(T)、LG50DTQ



电气系统 / Electrical system

LG45D

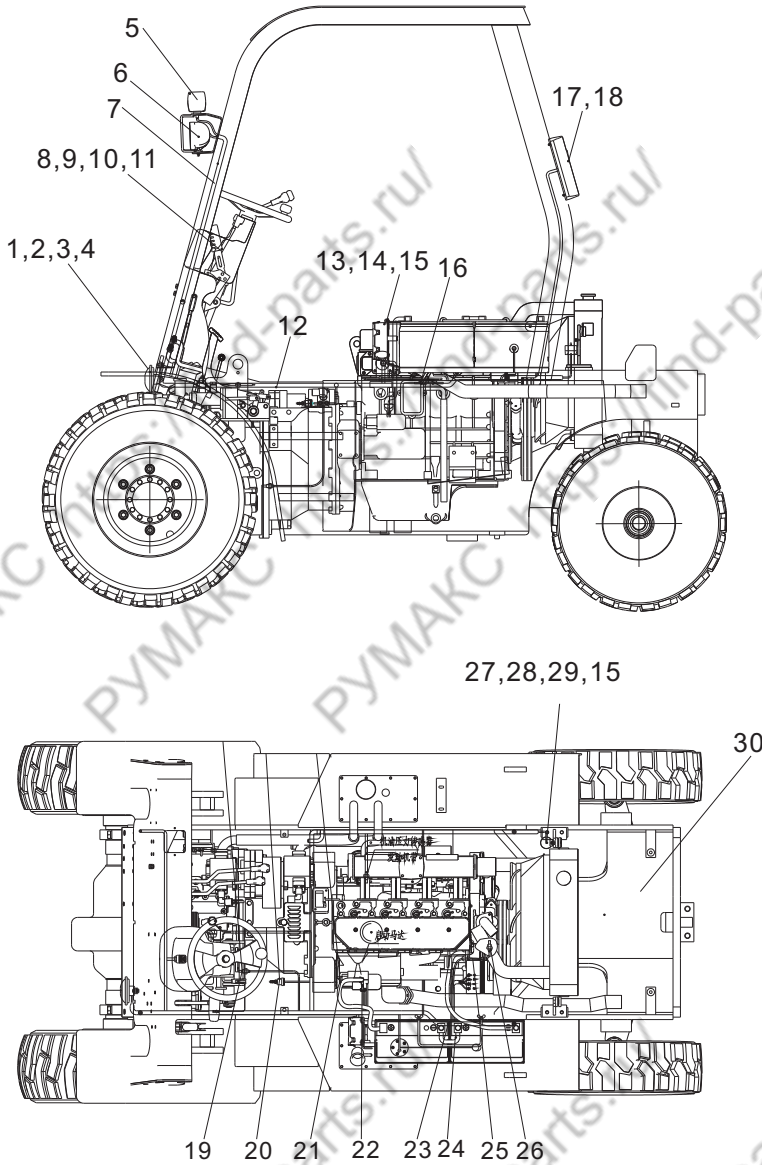


电气系统/ Electric system

序号 Item No	编 码 Code	图 号 Part No	零 部 件 名 称 Description	数量 Q'ty	备 注 Remark
1	60401050090	LG0060DT.15-005	喇叭 Horn	1	
2	51421090115	GB/T97.1	垫圈8 Washer 8	1	
3	51401090107	GB/T93	垫圈8 Washer 8	1	
4	51204090914	GB/T5783	螺栓M8×16 Bolt M8×20	1	
5	30015067102	LG0060DT.15.02	前组合灯 Front combination lamp	2	
6	30015064202	LG0045DT.15.01	工作灯 Working lamp	2	
7	30015064508	LG0030DT.15.03	护顶架线束 overhead guard wiring	2	
8	60405020047	LG0030D.15-003	组合开关 Combination lamp	1	
9	51430080114	GB/T5287	垫圈6 Washer 6	4	
10	51204081214	GB/T5783	螺栓M6×30 Bolt M6×30	4	
11	30015163419	LG0060DT.15.18	组合仪表 Combination instrument	1	
12	30015067610	LG0045DT.15.13	线束总成 Wiring harness assembly	1	
13	30015069103	LG0045DT.15.12	控制盒 Control box	1	
14	51158190304	GB/T818	螺钉M6×12 Screw M6×12	4	
15	51421080115	GB/T97.1	垫圈6 Washer 6	5	
16	30015163600	LG0060DT.15-018	油量传感器 Oil capacity sensor	1	
17	30015064408	LG0045DT.15.05	后组合灯 Rear combination lamp	2	
18	51307000719	GB/T6170	螺母M5 Nut M5	2	
19	30015066303	LG0045D.15.01	连接线束 Connecting wiring harness	3	
20	60405020218	LG0030D.15-006	刹车灯开关 Brake lamp switch	1	
21	30015066207	LG0045DT.15.10	连接电缆 Connecting cable	1	
22	30015068302	LG0030DⅢ.15.09	易熔线 Fusible cable	1	
23	30015068003	LG0045DT.15.09	蓄电池盒总成 Battery box	1	
24	30015066206	LG0045DT.15.07	连接电缆 Connecting cable	1	
25	30015061502	LG0045DT.15.08	地线电缆 Ground cable	1	
26	60401050091	LG0060DT.15-011	倒车蜂鸣器 Backup buzzer	1	
27	51204080814	GB/T5783	螺栓M6×12 Bolt M6×16	1	
28	51401080107	GB/T93	垫圈6 Plain washer 6	1	
29	30015880019	LG0060DT.15.19	电气系统原理图LG60DT Schematic diagram	1	

电气系统 / Electric system

LG45DT、LG50DTQ

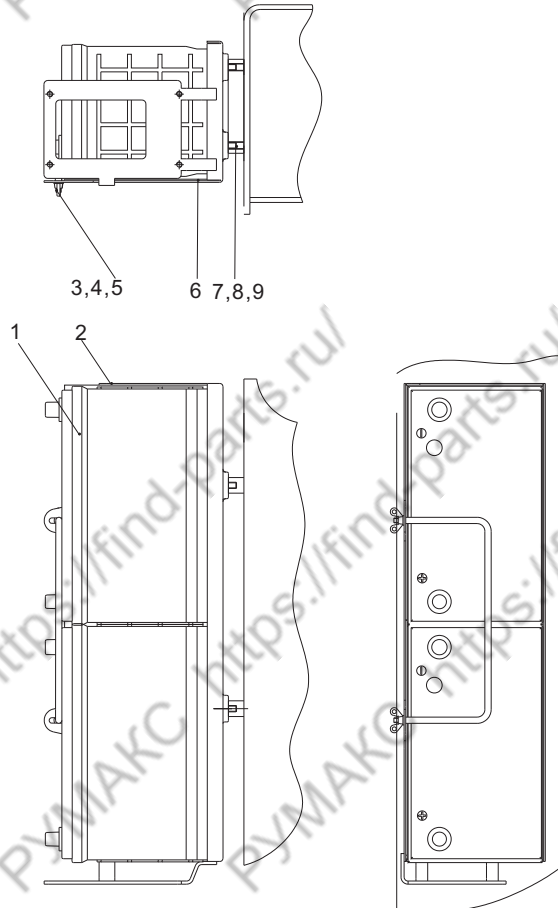


电气系统/ Electric system

序号 Item No	编 码 Code	图 号 Part No	零 部 件 名 称 Description	数量 Q'ty	备 注 Remark
1	60401050090	LG0060DT.15-005	喇叭 Horn	1	
2	51421090115	GB/T97.1	垫圈8 Washer 8	1	
3	51401090107	GB/T93	垫圈8 Washer 8	1	
4	51204090914	GB/T5783	螺栓M8×16 Bolt M8×16	1	
5	30015067102	LG0060DT.15.02	前组合灯 Front combination lamp	2	
6	30015064202	LG0045DT.15.01	工作灯 Working lamp	2	
7	30015064508	LG0030DT.15.03	护顶架线束 Overhead guard harness	2	
8	60405020047	LG0030D.15-003	组合开关 Combination switch	1	
9	51430080114	GB/T5287	垫圈6 Washer 6	4	
10	51204081214	GB/T5783	螺栓M6×30 Bolt M6×30	4	
11	30015163419	LG0060DT.15.18	仪表总成 Instrument assembly	1	
12	30015067610	LG0045DT.15.13	线束总成 Wiring harness	1	
13	30015069103	LG0045DT.15.12	控制盒 Control box	1	
14	51158190304	GB/T818	螺钉M6×12 Screw M6×12	4	
15	51421080115	GB/T97.1	垫圈6 Spring lock washer 6	5	
16	30015163600	LG0060DT.15-018	油量传感器 Oil capacity sensor	1	
17	30015064408	LG0045DT.15.05	后组合灯 Rear combination lamp	2	
18	51307000719	GB/T6170	螺母M5 Nut M5	2	
19	30015163703	LG0060DT.15-023	油温报警开关 Oil temperature alarm switch	1	
20	60405020218	LG0030D.15-006	刹车灯开关 Brake lamp switch	1	
21	30015066207	LG0045DT.15.10	连接电缆 Connecting cable	1	
22	30015068302	LG0030DⅢ.15.09	易熔线 Fusible wiring	1	
23	30015068003	LG0045DT.15.09	蓄电池盒总成 Battery box assembly	1	
24	30015066206	LG0045DT.15.07	连接电缆 Connecting cable	1	
25	30015061502	LG0045DT.15.08	地线电缆 Ground cable	1	
26	30015163605	LG0060DT.15-020	水温传感器 Water temperature sensor	1	
27	60401050091	LG0060DT.15-011	倒车蜂鸣器 Backup buzzer	1	
28	51204080814	GB/T5783	螺栓M6×12 Bolt M6×12	1	
29	51401080107	GB/T93	垫圈6 Washer 6	1	
30	30015880019	LG0060DT.15.19	电气系统原理图LG60DT Schematic diagram	1	

蓄电池安装/Battery assembly

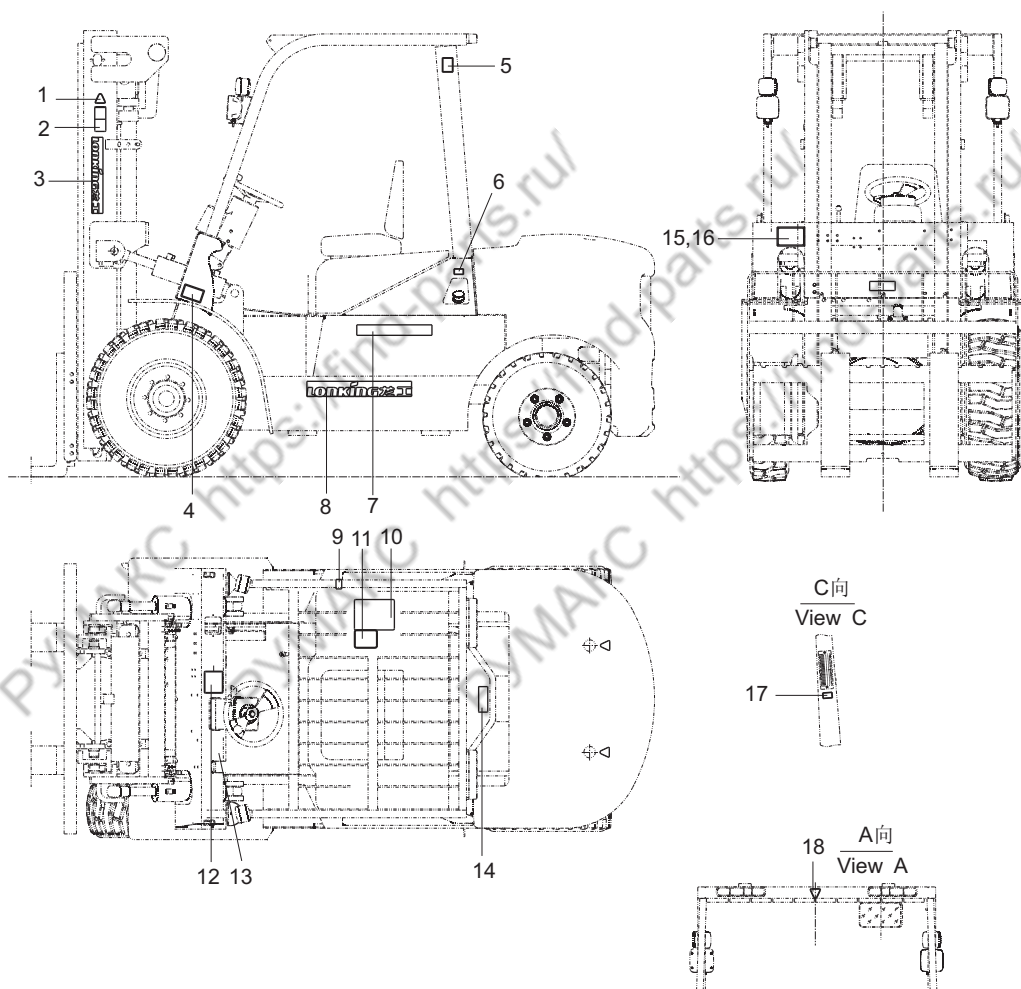
LG45D(T)、LG50DTQ



序号 Item No	编 码 Code	图 号 Part No	零部件名称 Description	数量 Q'ty	备 注 Remark
1	60401030028	LG0030D.15.05.01	蓄电池 Battery	2	
2	30015062104	LG0045DT.15.09.01	电瓶支架焊合 Battery bracket weldment	1	
3	30015161301	LG0045DT.15.09-001	卡子 Clip	1	
4	51420080121	GB/T96.1	垫圈6 Spring lock washer 6	2	
5	51354000404	GB/T62.1	螺母M6 Nut M6	2	
6	30015156800	30D-1541001	隔热垫 Isolating gasket	2	
7	51204090914	GB/T5783	螺栓M8×16 Bolt M8×16	4	
8	51421090115	GB/T97.1	垫圈8 Plain washer 8	4	
9	51401090107	GB/T93	垫圈8 Spring lock washer 8	4	

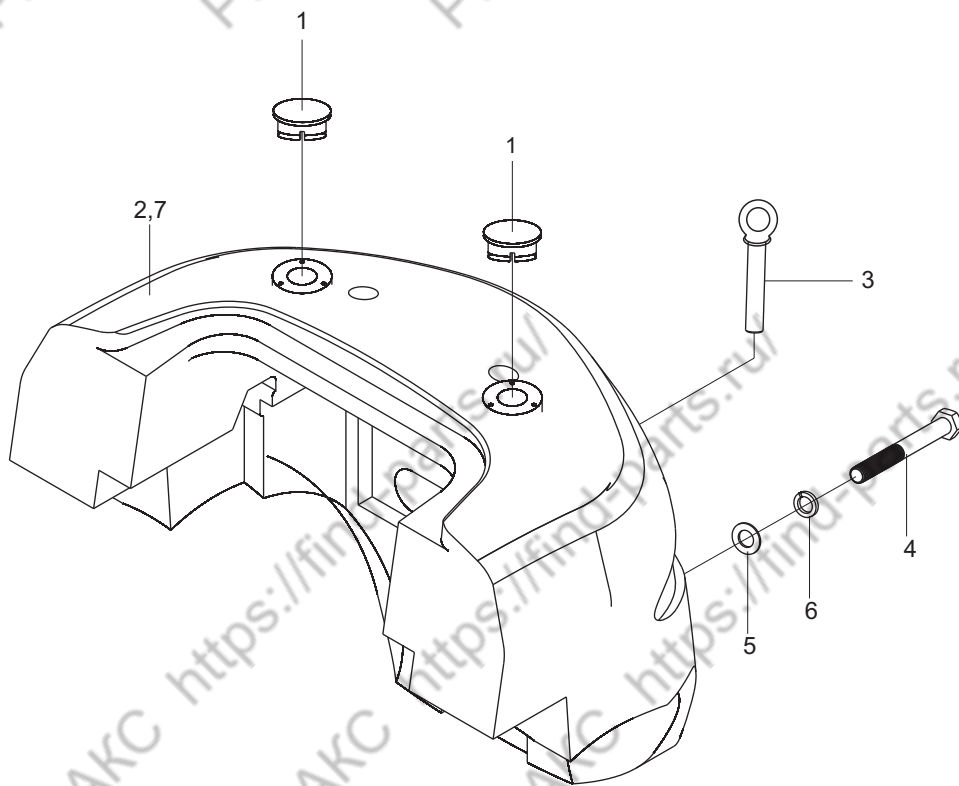
标牌/Decal

LG45D(T)、LG50DTQ



平衡重总成/Counter Balance assembly

LG45D(T)、LG50DTQ



序号 Item No	编 码 Code	图 号 Part No	零部件名称 Description	数量 Q'ty	备 注 Remark
1	30017159100	30D-1700002	孔塞 Orifice plug	2	
2	30017151521	LG0045DT.17-001	平衡重 Counter balance	1	
3	30017038505	LG0045DT.17.01	牵引销焊合 Traction pin weldment	1	
4	51203193714	GB/T5782	螺栓M30×220 Bolt M30×220	2	
5	30017106400	LG0030D.17-003	垫圈 Washer	2	
6	51401200107	GB/T93	垫圈30 Washer 30	2	
7	30017151546	LG0045DT.17-002	平衡重 Counter balance	1	